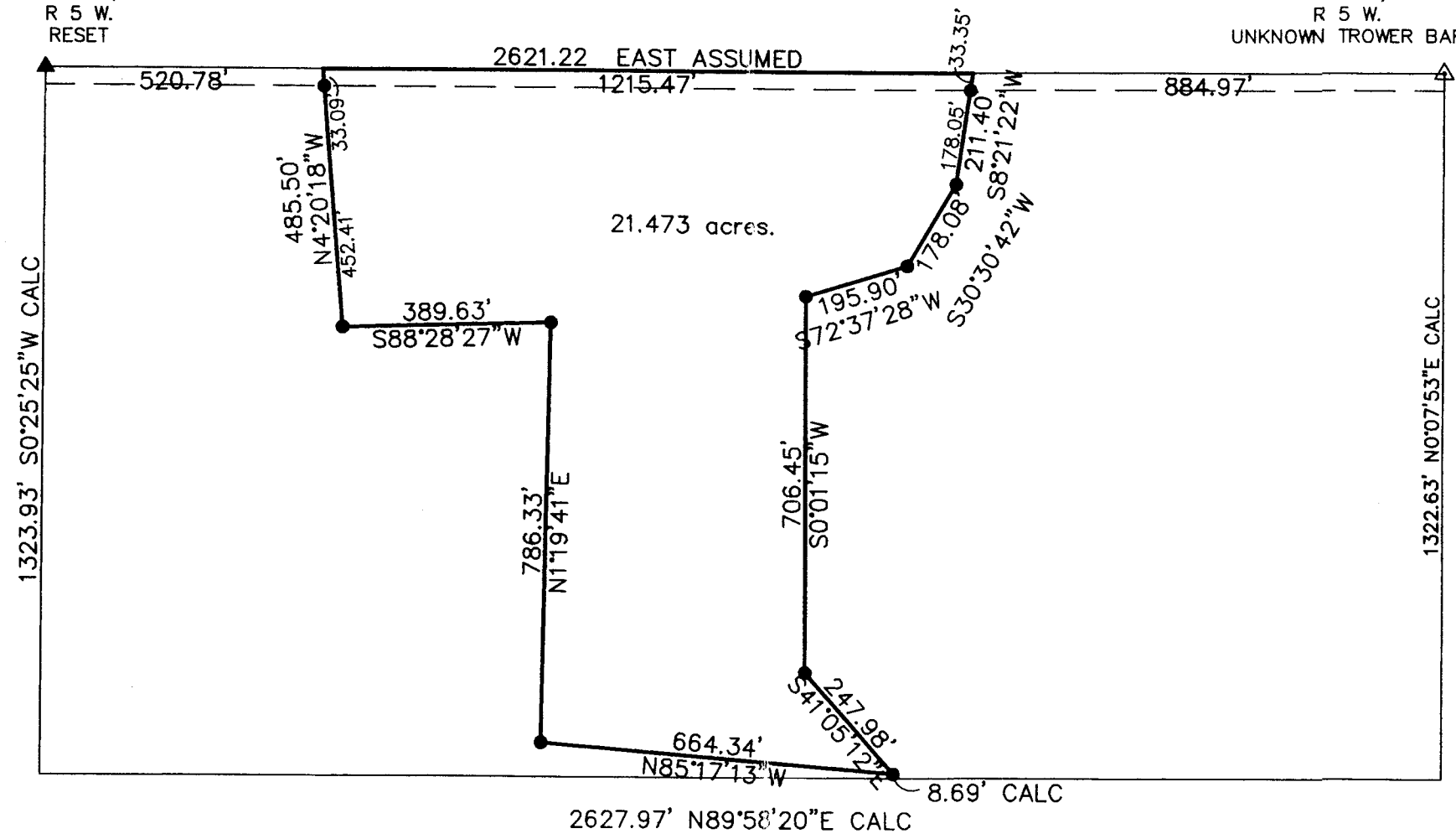
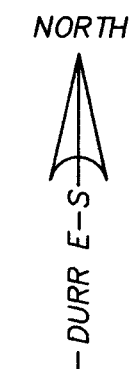
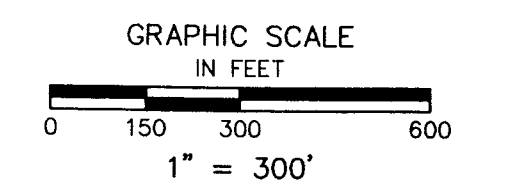


DURR ENGINEERING,
SURVEYING, PLANNING, & DEVELOPMENT
525 HOWARD STREET
HUTCHINSON, KS 67501
PHONE: 620-663-9613

NW COR
SEC. 17,
T 20 S,
R 5 W.
RESET

N 1/4 COR
SEC. 17,
T 20 S,
R 5 W.
UNKNOWN TOWER BAR



LEGEND

- △ SECTION CORNER FOUND
- ▲ SECTION CORNER SET
- PROPERTY CORNER SET

REVIEW SURVEYOR'S CERTIFICATE
STATE OF KANSAS }
COUNTY OF McPHERSON } SS

REVIEWED IN ACCORDANCE WITH THE
REQUIREMENTS OF K.S.A. 58-2004,
_____, 2006.

NOTES:
1) NO TITLE WORK PROVIDED TO SURVEYOR PRIOR TO SURVEY
2) SECTION CORNER TIES TO BE SENT TO COUNTY ENGINEER'S
OFFICE AND KANSAS STATE HISTORICAL SOCIETY

I, DUNCAN W. DURR, DO HEREBY CERTIFY THE
HEREON SURVEY TO BE A TRUE AND ACCURATE
REPRESENTATION OF THE CONDITIONS FOUND
ON THE DATE HEREON WRITTEN.

CLIENT: RICHARD EKHMOLM DRAWN: DURR PROJECT: 6041 SHEET: 1 OF: 1

A TRACT IN THE NORTH HALF OF THE NORTHWEST QUARTER OF SECTION 17, TOWNSHIP 20 SOUTH, RANGE 5 WEST OF THE SIXTH PRINCIPAL MERIDIAN, MORE PARTICULARLY DESCRIBED AS FOLLOWS:
BEGINNING 520.78 FEET EAST ASSUMED OF THE NORTHWEST CORNER OF SAID NORTH HALF OF NORTHWEST QUARTER; THENCE CONTINUING EAST, A DISTANCE OF 1215.47 FEET; THENCE S8°21'22"W, A DISTANCE OF 211.40 FEET; THENCE S30°30'42"W, A DISTANCE OF 178.08 FEET; THENCE S72°37'28"W, A DISTANCE OF 195.90 FEET; THENCE S0°01'15"W, A DISTANCE OF 706.45 FEET; THENCE S41°05'12"E, A DISTANCE OF 247.98 FEET; THENCE N85°17'13"W, A DISTANCE OF 664.34 FEET; THENCE N1°19'41"E, A DISTANCE OF 786.33 FEET; THENCE S88°28'27"W, A DISTANCE OF 389.63 FEET; THENCE N4°20'18"W, A DISTANCE OF 485.50 FEET TO THE POINT OF BEGINNING; TRACT CONTAINS 21.473 ACRES, EXCEPT THE NORTH ROAD RIGHT OF WAY AND ANY OTHER EASEMENTS OF RECORD; ALL IN McPHERSON COUNTY, KANSAS. AKA 115 EISENHOWER

STATE: KANSAS COUNTY: McPHERSON SEC: 17 TWP: 20 S R: 5 W DATE: 6/4/2006

REGISTERED LAND SURVEYOR

DW Durr
REGISTERED LAND SURVEYOR