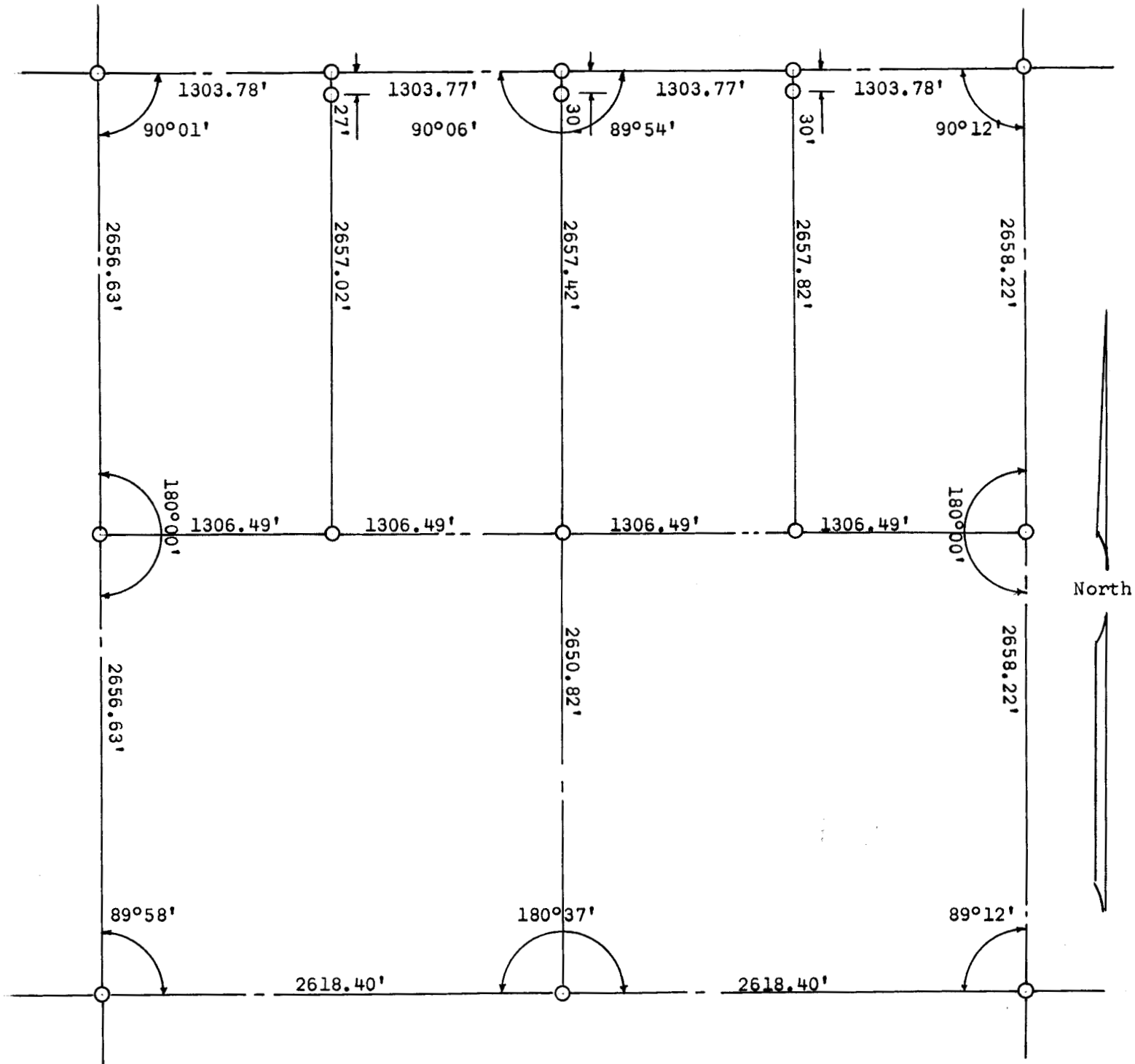


SURVEY OF THE W 1/2, NE 1/4 & E 1/2 NW 1/4  
Section 17, T20S, R3W



○ Pins set this survey

State of Kansas )  
County of McPherson) SS

I, Francis R. Rankin, County Engineer of McPherson County Kansas, do hereby certify that under my supervision a survey was made in Section 17, T20S, R3W of the 6th P.M.

Description: West half (W1/2), North East Quarter (NE 1/4) and East half (E 1/2), Northwest Quarter (NW 1/4) of Section 17, T20S, R3W and the above plat is a true exhibit of said survey.

Signed this 23rd day of April 1964

*Francis R. Rankin*

Francis Rankin  
County Engineer  
McPherson, Kansas



MICROFILM