

Garber Surveying Service, P.A.



2908 North Plum St.
Hutchinson, Kansas 67502
Phone 620 665-7032 • FAX 620 663-7401

511 North Poplar St.
Newton, Kansas 67114
Phone 316 283-5053 • FAX 316 283-5073

115 East Marlin
McPherson, Kansas 67460
Phone 620 241-4441 • FAX 620 241-4458

Project No. G2015-545

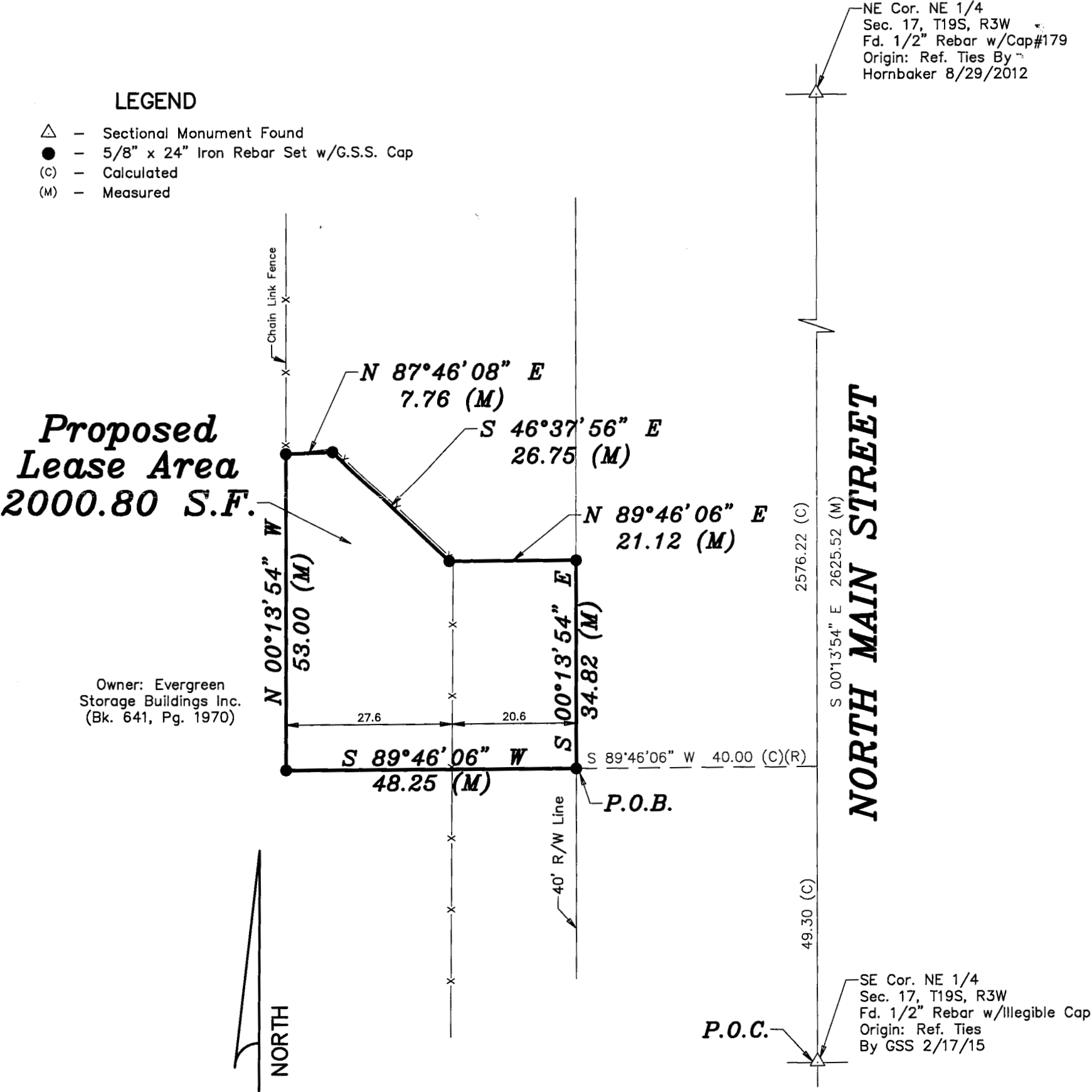
SURVEY FOR: MTC

DESCRIPTION FOR PROPOSED LEASE AREA:

A portion of the Northeast Quarter of Section 17, Township 19 South, Range 3 West of the 6th Principal Meridian, McPherson County, Kansas described as follows:

Commencing at the Southeast corner of said Northeast Quarter; thence on a NAD 83 Kansas South Zone bearing of North 00°13'54" East on the East line of said Northeast Quarter a distance of 49.30 feet; thence South 89°46'06" West perpendicular to said East line a distance of 40.00 feet to the point of beginning; thence continuing South 89°46'06" West perpendicular to said East line a distance of 48.25 feet; thence North 00°13'54" West parallel with said East line a distance of 53.00 feet; thence North 87°46'08" East a distance of 7.76 feet; thence South 46°37'56" East a distance of 26.75 feet; thence North 89°46'08" East perpendicular to said East line a distance of 21.12 feet; thence South 00°13'54" East parallel with said East line a distance of 34.82 feet to the point of beginning.

Containing 2000.80 Square Feet and subject to any easements or restrictions of record.



DATE OF FIELD WORK: August 5, 2015

SURVEYOR'S CERTIFICATE:

I hereby certify this plat to be a true, correct and complete representation of the property described above as surveyed under my supervision.

Dated: August 6, 2015

Nicholas D. Schmidt LS #1492
8/6/15