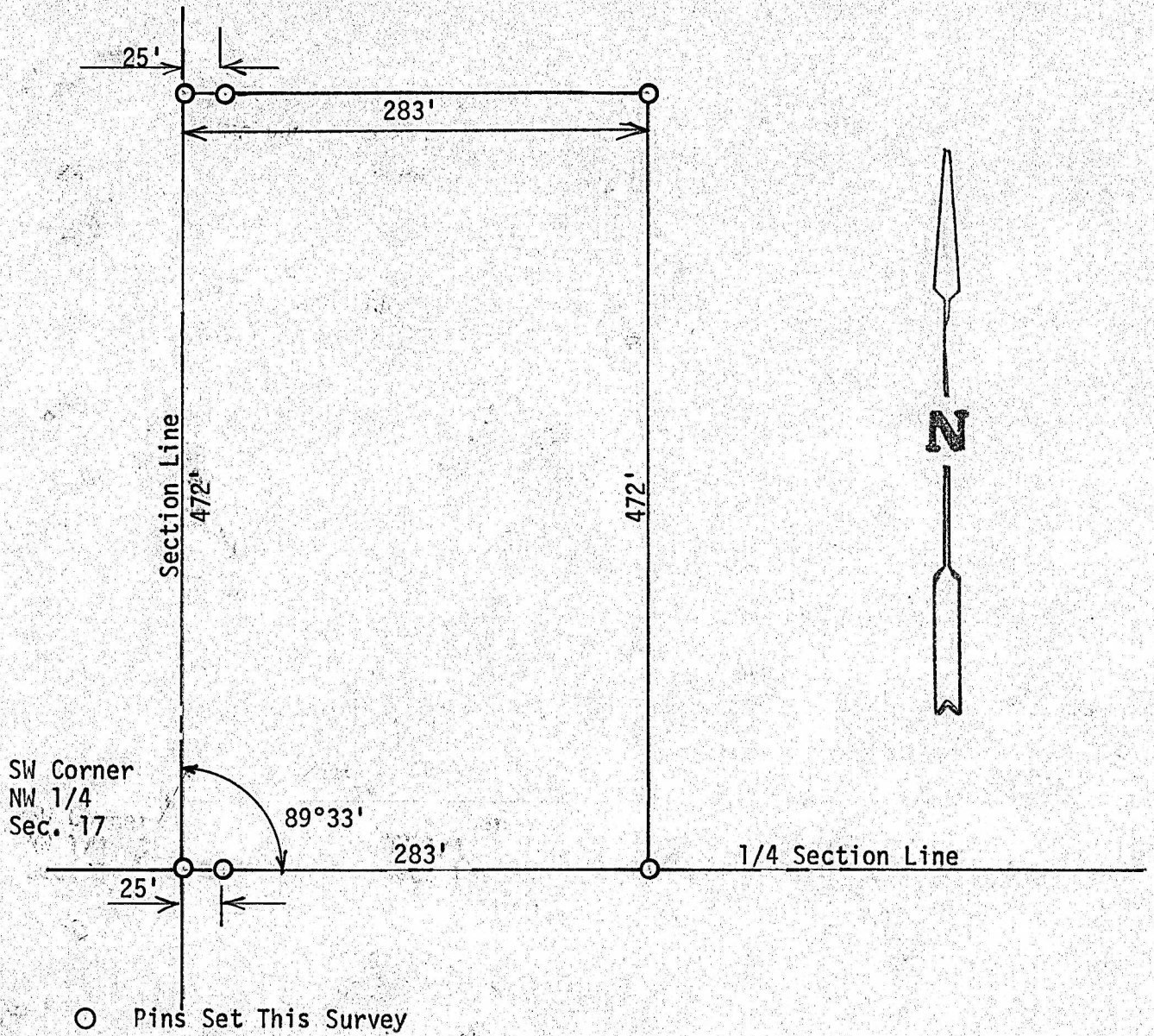


A SURVEY OF A TRACT OF LAND IN THE
NW 1/4 SECTION 17, T18S, R3W
MC PHERSON COUNTY, KANSAS



State of Kansas)
County of McPherson) SS

I, F. R. Rankin, County Engineer of McPherson County, Kansas, do hereby certify that under my supervision a survey was made in the NW 1/4 Section 17, T18S, R3W of the 6th P.M. and described as follows:

Beginning at the SW corner of said NW 1/4 Section 17, T18S, R3W; thence East on 1/4 Section Line 283 feet; thence North parallel with Section Line 472 feet; thence West 283 feet; thence South on Section Line 472 feet to place of beginning. Said tract of land contains 3.1 acres more or less and that the accompanying plat is a true exhibit of said survey as far as it is known to me.

Survey called for by Sally Chapman

Signed this 8 day of August, 1973

E. B. Rankin

F. R. Rankin, P. E.
Administrator of P.W. & Co. Engineer
McPherson County, Kansas

