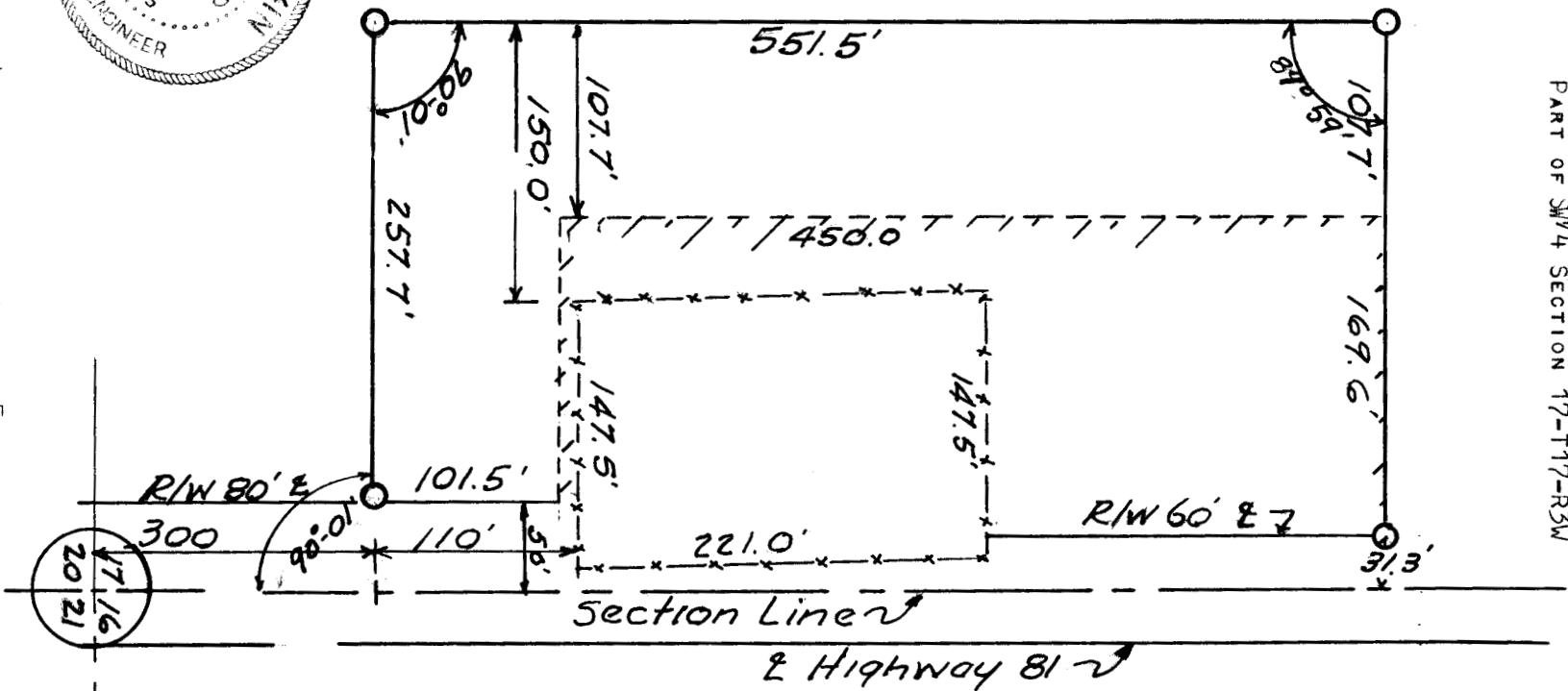


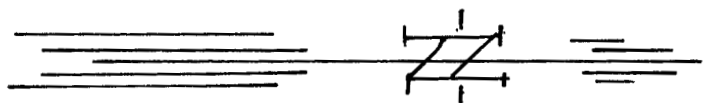
SEWER PLANT LAND
LINDSBURG KANSAS
PART OF $\frac{3}{4}$ SECTION 17-T17-R3W



DESCRIPTION

COMMENCING AT THE SOUTH EAST CORNER OF SECTION 17-T17-R3W IN MC PHERSON COUNTY KANSAS, THENCE NORTH 300.0' THENCE WEST AT AN ANGLE AS SHOWN TO A POINT 50.0' WEST OF THE SECTION LINE AND TO THE POINT OF BEGINNING; THENCE CONTINUING ON WEST 257.78; THENCE NORTH PARALLEL TO THE SECTION LINE 551.5 FEET; THENCE EAST AT AN INTERIOR ANGLE OF $89^{\circ}-59'$ A DISTANCE OF 277.4' AND TO A POINT 31.1' WEST OF THE SECTION LINE AND 60' FROM THE CENTER OF US 81; THENCE SOUTH ALONG THE WEST RIGHT-OF-WAY LINE OF US 81 HIGHWAY TO THE POINT OF BEGINNING. SAID TRACT ALL LYING IN THE SE $\frac{1}{4}$ OF SECTION 17-T17-R3W AND CONTAINING 3.27 ACRES OF WHICH 2.07 ACRES WAS PREVIOUSLY HELD BY THE CITY OF LINDBERG WITH A LEASE OR EASEMENT.

Scale 1" = 100'



I FRANCIS RANKIN LICENSED PROFESSIONAL ENGINEER OF THE STATE OF KANSAS, HEREBY CERTIFY THE PLAT SHOWN HEREON IS A TRUE AND CORRECT COPY OF A SURVEY MADE UNDER MY SUPERVISION, THAT ALL LINES ANGLES AND DIMENSIONS ARE TRUE AND CORRECT SO FAR AS IT IS KNOWN TO ME

SIGNED THIS 27 DAY OF JUNE 1963 AT MC PHERSON KANSAS

Francis Rankin

112200113