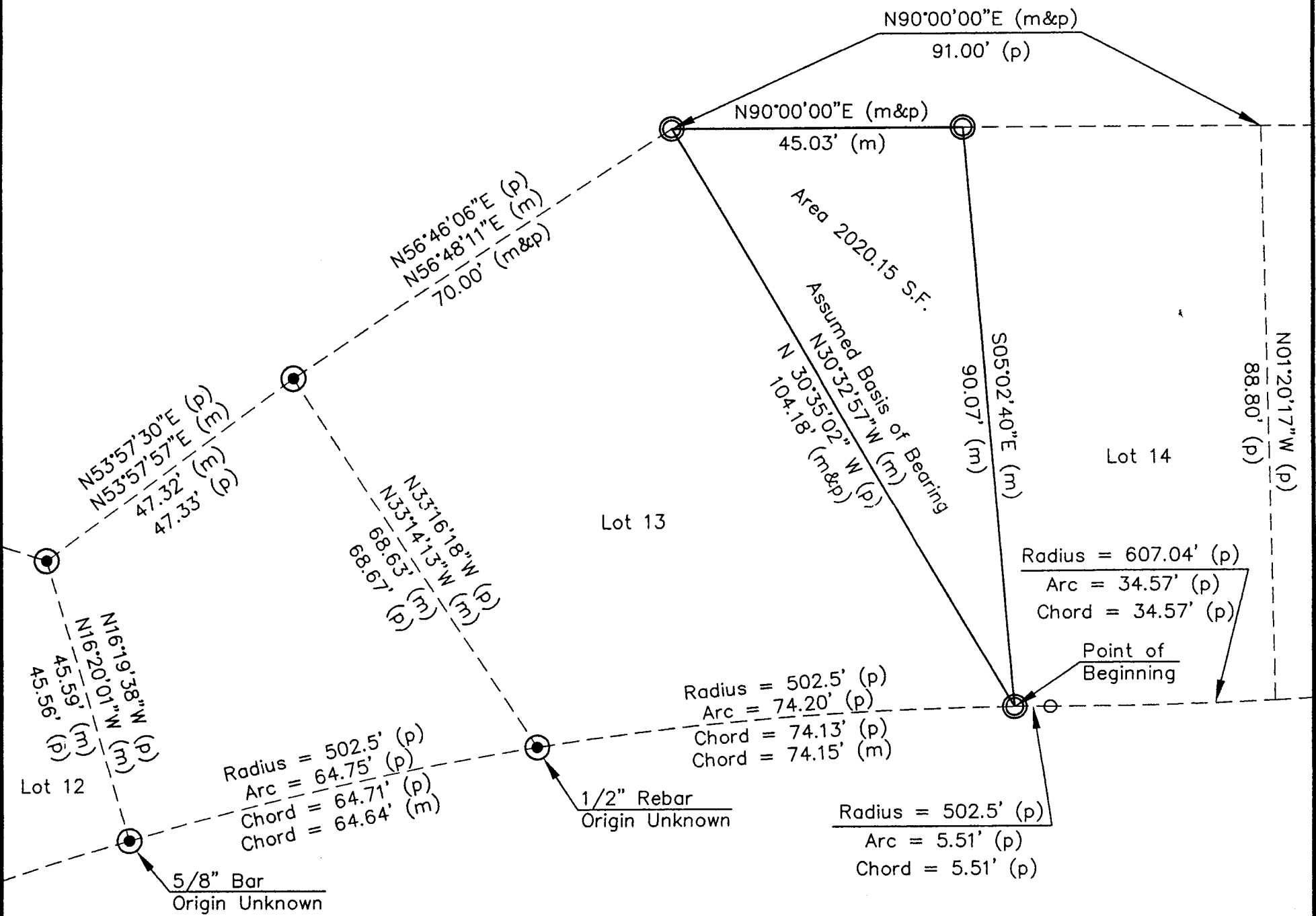
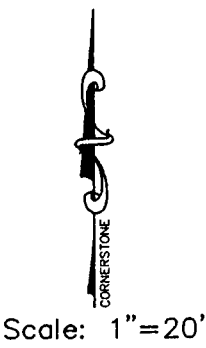


# CORNERSTONE SURVEYING

Richard Langley  
(785) 823-6011  
P.O. Box 2745  
Salina, Kansas 67402



## LEGEND:

- △ Section Corner
- Set 1/2" Rebar & Cap (Langley RLS #1332)
- Found "Forgy" Unless Labeled Otherwise
- Found "1-1/2" Aluminum Disk, Origin Unknown
- ⊕ Set "+" Cut in Concrete
- (p) Platted
- (m) Measured
- (c) Calculated
- (BLM) Bureau of Land Management