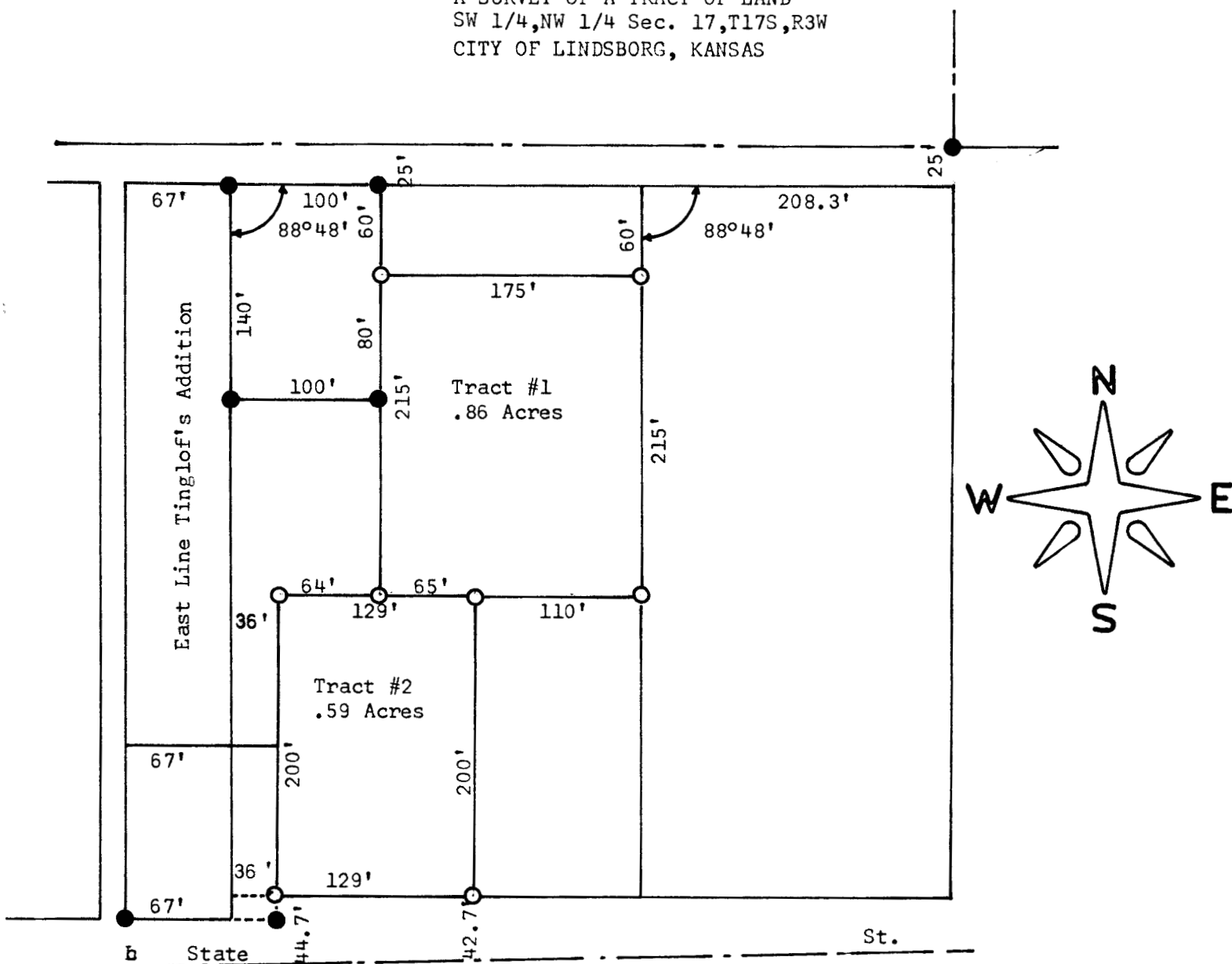


A SURVEY OF A TRACT OF LAND
SW 1/4, NW 1/4 Sec. 17, T17S, R3W
CITY OF LINDSBORG, KANSAS



- Pins Set Previous Survey
- Pins Set This Survey

State of Kansas)
County of McPherson) SS

I, F. R. Rankin, County Engineer of McPherson County, do hereby certify that under my supervision a survey was made in the SW 1/4, NW 1/4 Section 17, T17S, R3W of the 6th P.M. and described as follows:

Tract #1 - Beginning at a point 208.3 feet West and 85 feet South of the NE corner of said SW 1/4, NW 1/4; thence South 215 feet; thence West 175 feet; thence North 215 feet; thence East 175 feet to the place of beginning. The land herein described contains .86 acres more or less.

Tract #2 - Beginning at a point 383.3 feet West and 300 feet South of the NE corner of said SW 1/4, NW 1/4 and being the SW corner at Tract #1 and also 100 feet East of the East line of Tinglof's Addition to the City of Lindsborg, Kansas; thence East 65 feet; thence South 200 feet; thence West 129 feet; thence North 200 feet; thence East 64 feet to the point of beginning. The land herein described contains .59 acres more less and the above plat is a true exhibit of said survey as far as it is known to me.

Survey called for by Carl Anderson

Signed this 28 day of September, 1969

F. R. Rankin
County Engineer
McPherson, Kansas



MICROFILM