

Main Office  
2908 North Plum Street  
Hutchinson, KS 67502  
Office: (620) 665-7032  
Fax: (620) 663-7401

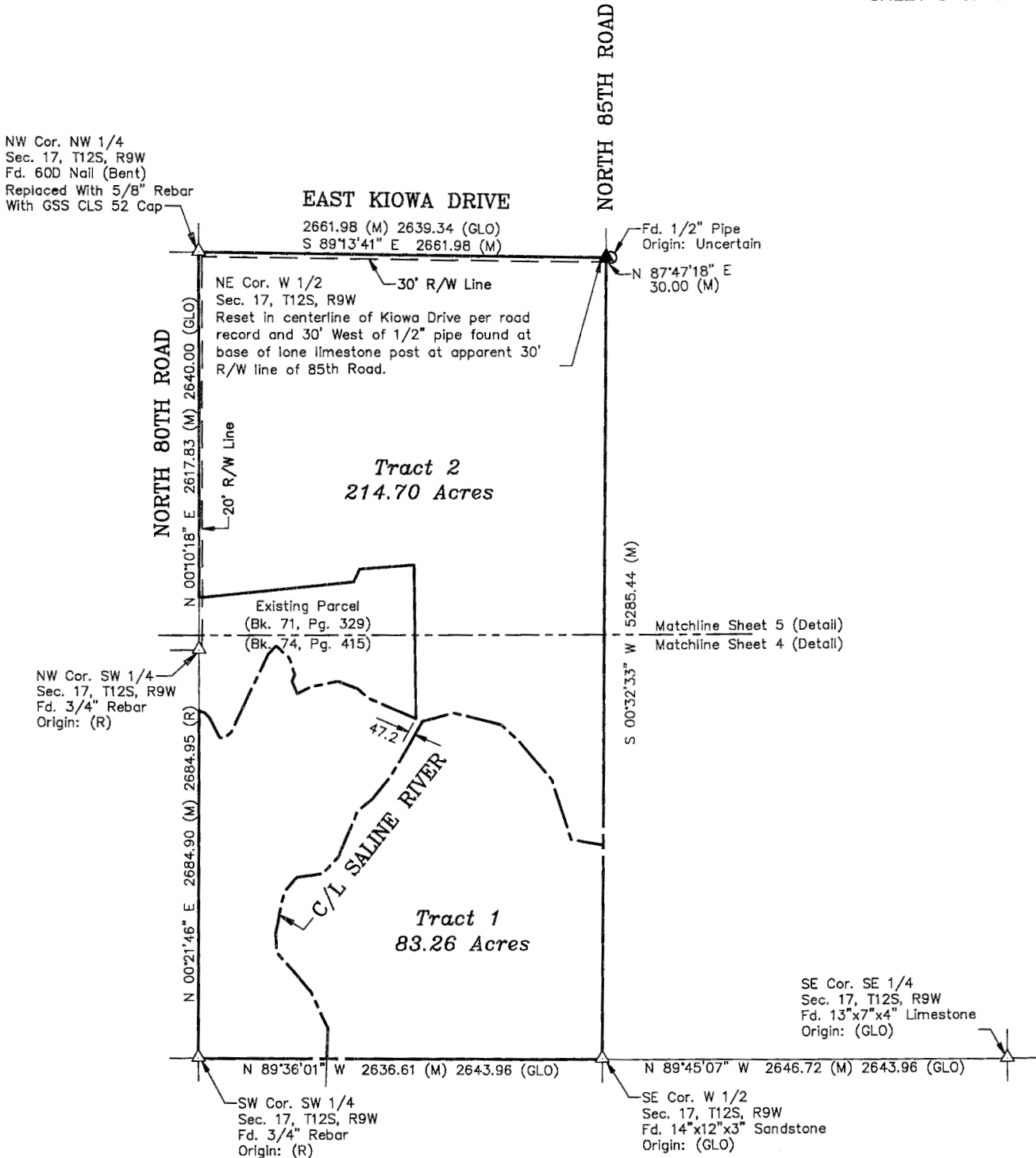


Garber Surveying Service, P.A.

Branch Offices  
Manhattan 785-320-4810  
McPherson 620-241-4441  
Newton 316-283-5053  
Salina 785-404-6302  
Wichita 316-260-9933

SURVEY FOR: WHITETAIL PROPERTIES

Project No. G2024-209  
SHEET 3 OF 6



LEGEND

- △ - Sectional Monument Found
- ▲ - Section Monument Set (5/8" x 24" Iron Rebar w/GSS CLS 52 Cap)
- - 5/8" x 24" Iron Rebar Set w/GSS CLS 52 Cap
- ⊙ - 5/8" x 24" Iron Rebar Set w/GSS Blue Line Point Cap
- (C) - Calculated
- (M) - Measured
- (R) - Record Measurement (Bk. 71, Pg. 329)
- GLO - General Land Office

SURVEYOR'S NOTES:

- Survey was made as per client request and no title work has been provided to the surveyor; therefore, the number and extent of easements and/or rights-of-way of record affecting said property has not been verified by this Survey.
- All measurements are in US Survey Feet.
- See Sheets 4 and 5 for tract details.

Scale: 1" = 1000'  
BASIS OF BEARING  
= NAD 83 KANSAS  
NORTH ZONE