

2642.97' M S0°00'00"E Assumed Bearing

W1/4 16-T21S-R4W

Fd. $\frac{5}{8}$ " Bar

Origin Unknown

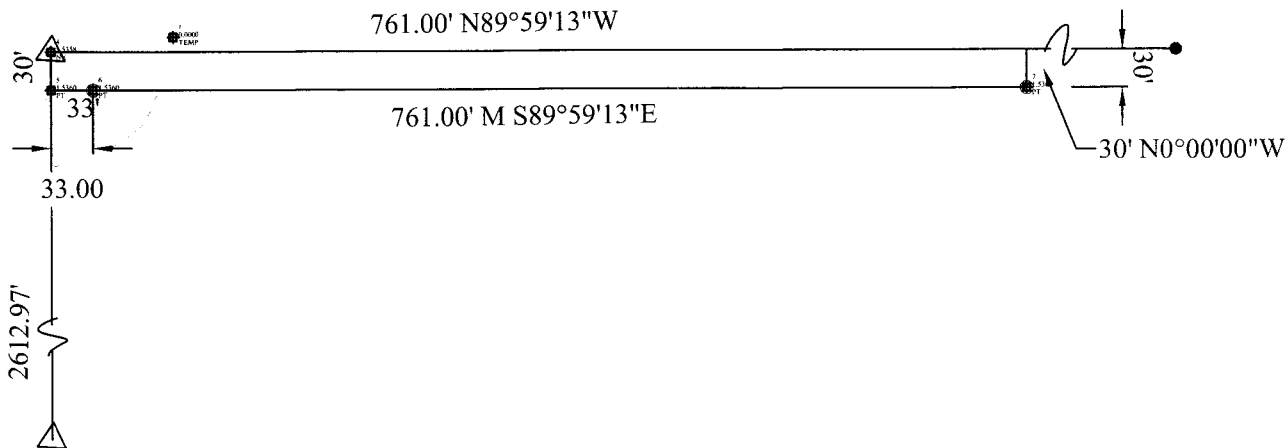
1. 30.20' E to spike in Power pole
2. 38.2' SW to spike in power pole
3. 60.2' NE to fire hydrant

Farmington Road (Existing 54' R/W)

1694.51' M N89°59'13"W

- Found Pin
- △ Found Monument
- Set $\frac{5}{8}$ " x 24" Bar
- M = Measured

Scale 1"=150'



SW Cor. 16-T21S-R4W

Fd. $\frac{5}{8}$ " Bar

Origin Unknown

1. 68.6' NW to spike in Power pole
2. 35.2' NE to spike in Power pole
3. 35.2' SE to spike in Power pole

SW Corner Valley View Addition
Found Garber Bar 2.5' deep
Placed 1/2" Bar and Cap over existing bar.

On April 30, 2003, Melanie Thrower, Kansas Land Surveyor 1297, surveyed the land as hereby platted.

Legal Description: The north 30 feet of the West 761 feet of the SW $\frac{1}{4}$ Section 16, Township 21 South, Range 4 West of the the 6th P.M.

