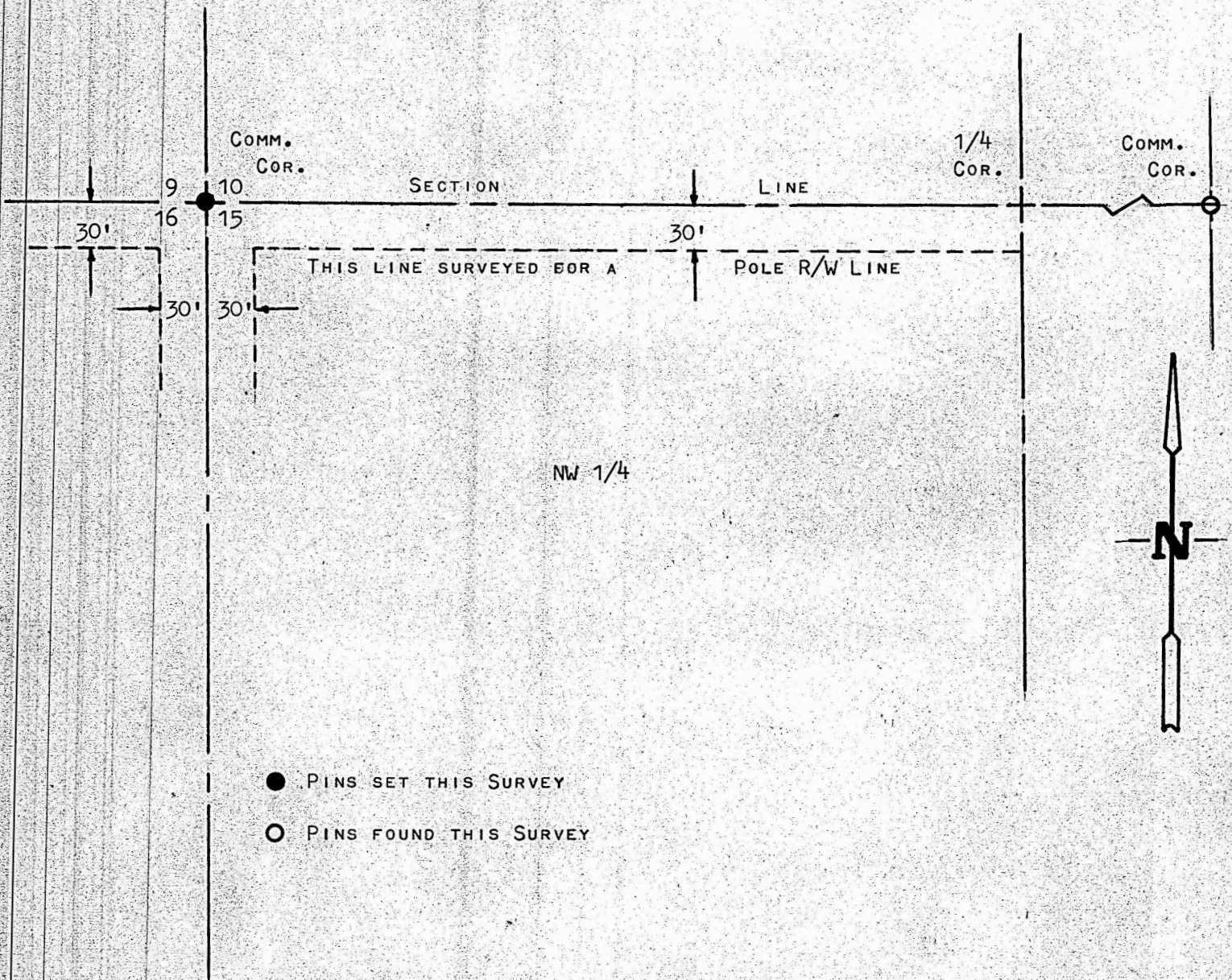


A SURVEY IN THE NW1/4 SECTION 15 & THE  
NE1/4 SECTION 16, 21-4



- PINS SET THIS SURVEY
- PINS FOUND THIS SURVEY

STATE OF KANSAS )  
COUNTY OF MCPHERSON) <sup>SS</sup>

I, FRANCIS RANKIN, COUNTY ENGINEER OF MCPHERSON COUNTY, KANSAS, DO HEREBY CERTIFY THAT A SURVEY WAS DONE UNDER MY SUPERVISION OF A POLE R/W LINE ON THE NORTH SIDE OF THE NW 1/4 SECTION 15, T21S-R4W AND OF THE NE CORNER R/W LINE OF THE NE1/4 SECTION 16, T21S-R4W OF THE 6TH P. M. AND THAT THE ABOVE PLAT IS A TRUE EXHIBIT OF SAID SURVEY AS FAR AS IT IS KNOWN TO ME.

SURVEY CALLED FOR BY THE KANSAS POWER & LIGHT CO. - HUTCHINSON, KSK

SIGNED THIS 30 DAY OF JANUARY, 1969.

*Francis Rankin*  
FRANCIS RANKIN  
COUNTY ENGINEER  
MCPHERSON COUNTY, KANSAS



MICROFILM