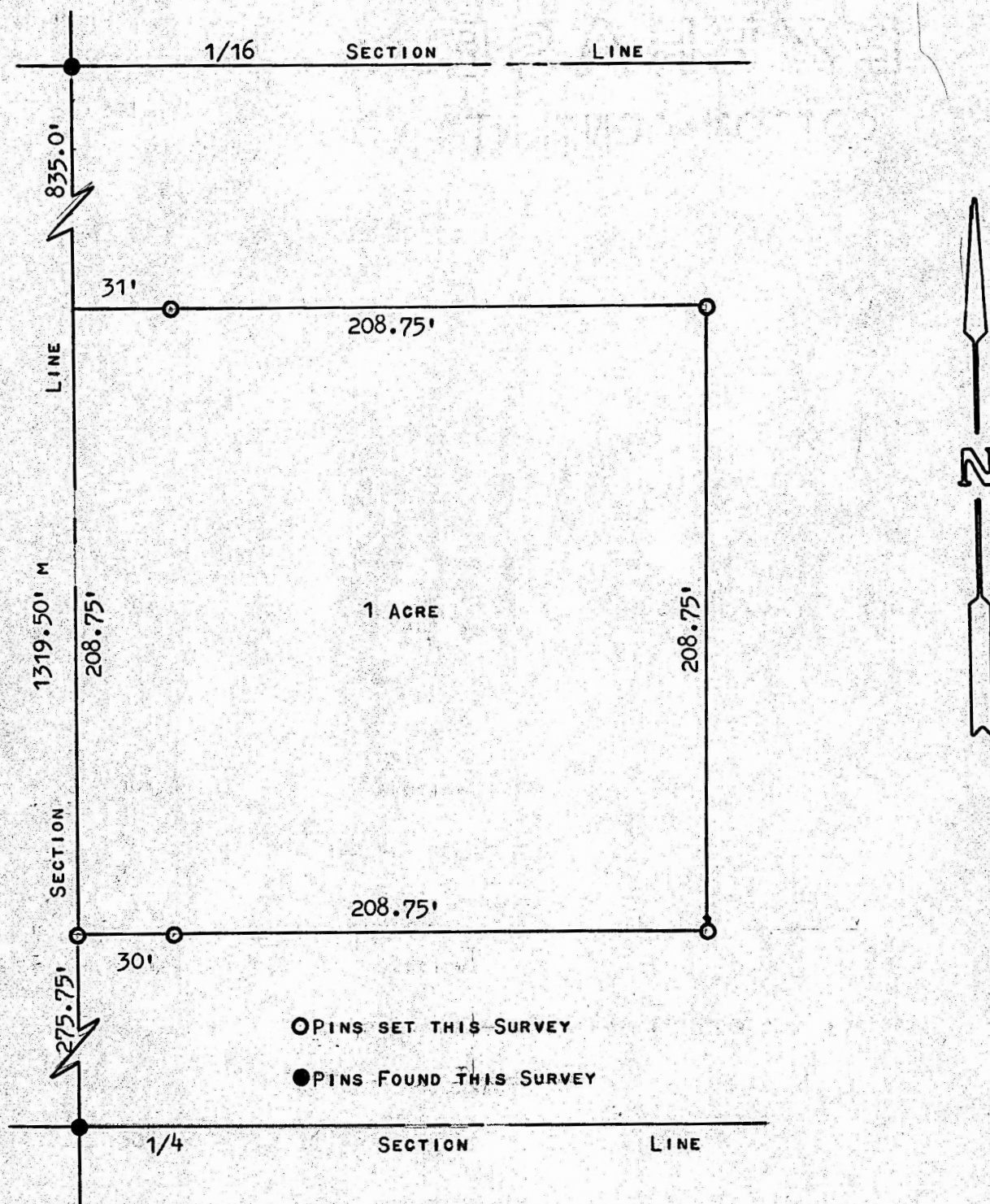


A SURVEY OF A TRACT OF LAND IN THE NW1/4 OF  
SECTION 16, T20S - R3W



STATE OF KANSAS )  
COUNTY OF McPHERSON ) ss

I, F. R. RANKIN, COUNTY ENGINEER OF McPHERSON CO., KANSAS, DO HEREBY CERTIFY THAT UNDER MY SUPERVISION A SURVEY WAS MADE OF A TRACT OF LAND IN THE S1/2, NW1/4, SEC. 16, T20S - R3W OF THE 6TH P.M. AND DESCRIBED AS FOLLOWS:

BEGINNING AT A POINT 835 FEET SOUTH OF THE NW CORNER OF SAID S1/2, NW1/4 OF SECTION 16, THENCE SOUTH 208.75 FEET, THENCE EAST 208.75 FEET, THENCE NORTH 208.75 FEET, THENCE WEST 208.75 FEET TO THE PLACE OF BEGINNING.

SAID TRACT CONTAINS 1 ACRE MORE OR LESS, AND THE ACCOMPANYING PLAT IS A TRUE EXHIBIT OF SAID SURVEY AS FAR AS IT IS KNOWN TO ME.

SURVEY CALLED FOR BY RALPH JOHNSTON

SIGNED ON THE 13 DAY OF AUGUST, 1973

*F. R. Rankin*  
F. R. RANKIN  
COUNTY ENGINEER  
McPHERSON CO., KANSAS

