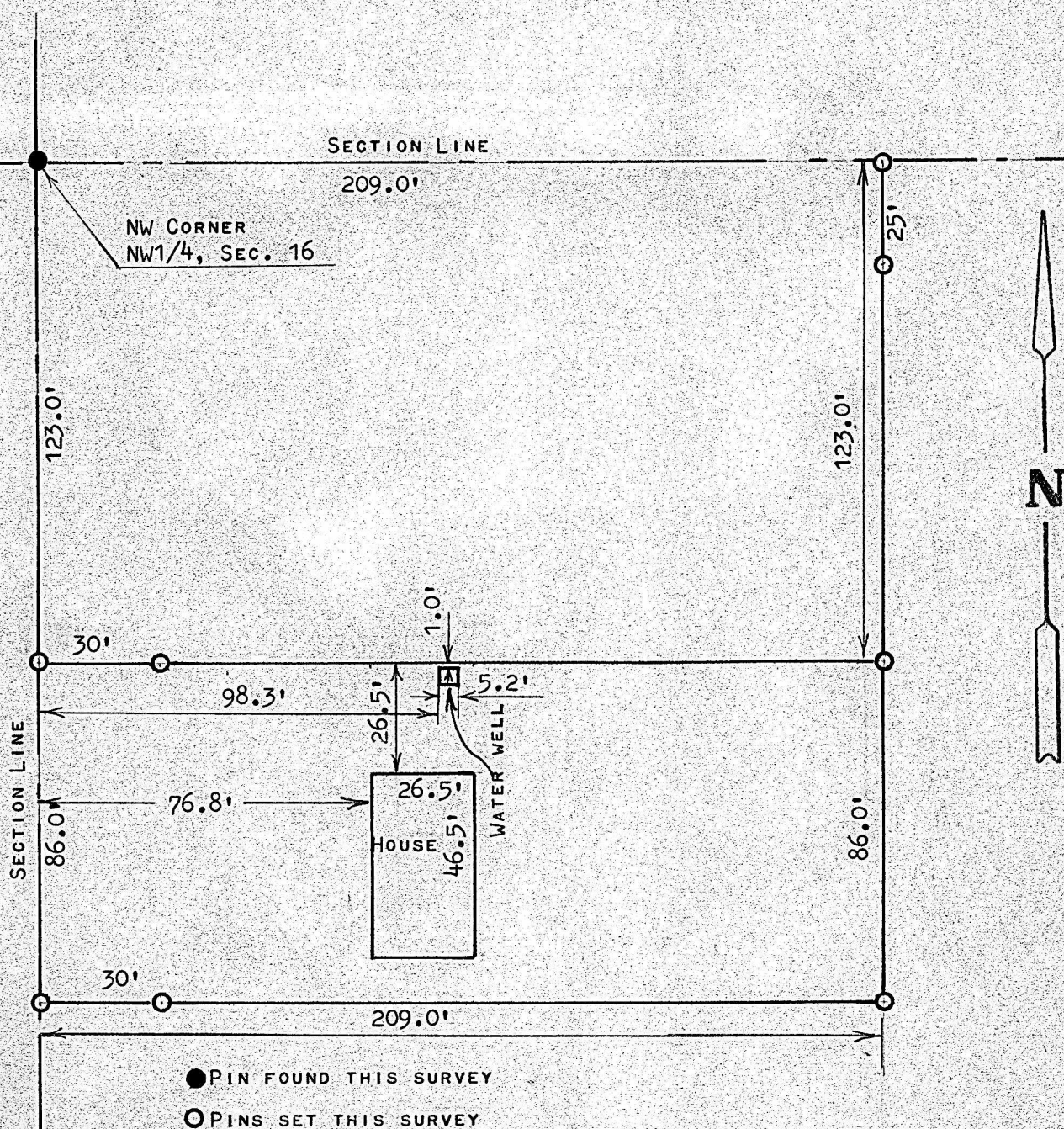


A SURVEY IN THE NW1/4, NW1/4 SECTION 16
T20S - R3W, MCPHERSON COUNTY, KANSAS



STATE OF KANSAS)
COUNTY OF MCPHERSON) SS

I, FRANCIS RANKIN, PROFESSIONAL ENGINEER OF THE STATE OF KANSAS
DO HEREBY CERTIFY THAT UNDER MY SUPERVISION A SURVEY WAS MADE
IN THE NW1/4, NW1/4, SECTION 16, T20S - R3W OF THE 6TH P.M.
AND DESCRIBED AS FOLLOWS;
BEGINNING 123.0 FEET SOUTH OF THE NW CORNER OF THE NW1/4, SECTION 16,
T20S R3W; THENCE EAST 209.0 FEET; THENCE SOUTH 86.0 FEET; THENCE
WEST TO SECTION LINE 209.0 FEET; THENCE NORTH ON SECTION LINE 86.0
FEET TO PLACE OF BEGINNING, AND THAT THE ACCOMPANYING PLAT IS A TRUE
EXHIBIT OF SAID SURVEY AS FAR AS IT IS KNOWN TO ME.

SURVEY CALLED FOR BY ADAMS

SIGNED THIS 31, DAY OF MARCH, 1970

Francis Rankin
FRANCIS RANKIN
PROFESSIONAL ENGINEER
MCPHERSON, KANSAS



MICROFILM