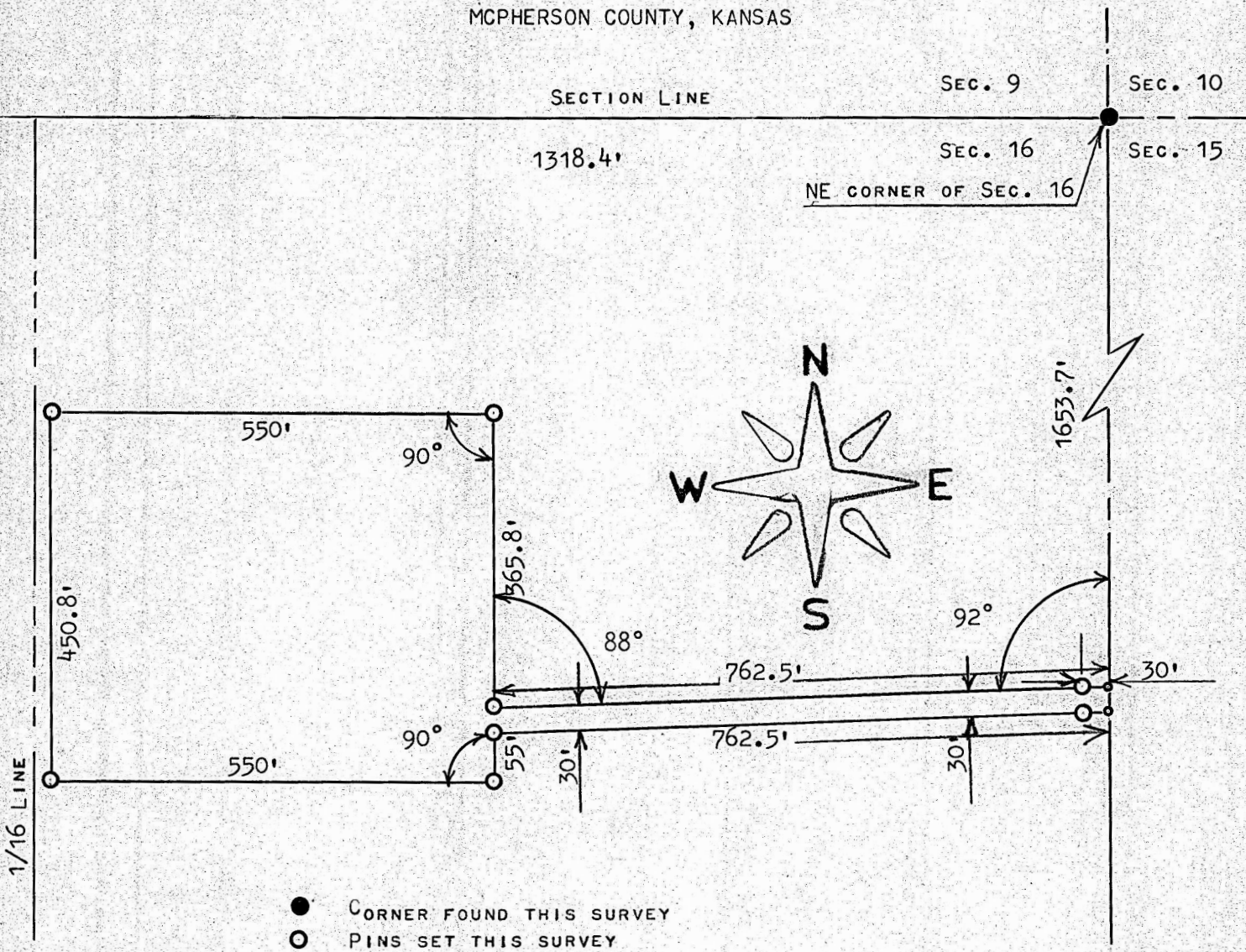


A SURVEY OF A TRACT OF LAND IN THE
E1/2, NE1/4, SECTION 16, T19S, R4W
MCPHERSON COUNTY, KANSAS



STATE OF KANSAS }
COUNTY OF MCPHERSON } SS

I, MELVIN FERGUSON, PROFESSIONAL ENGINEER OF THE STATE OF KANSAS, DO HEREBY CERTIFY THAT UNDER MY SUPERVISION A SURVEY WAS MADE OF A TRACT OF LAND IN THE E1/2, NE1/4, SECTION 16, T19S, R4W OF THE 6TH. P.M. AND DESCRIBED AS FOLLOWS;

BEGINNING AT A POINT 1653.7 FEET SOUTH OF THE NE CORNER OF SAID SECTION 16, T19S R4W; THENCE WEST EXTERIOR ANGLE OF 92° AND A DISTANCE OF 762.5 FEET; THENCE NORTH PARALLEL WITH EAST SECTION LINE 365.8 FEET; THENCE WEST 90° A DISTANCE OF 550' FEET; THENCE SOUTH 450.8 FEET; THENCE 90° EAST A DISTANCE OF 550 FEET; THENCE NORTH ~~PARALLEL~~ WITH SECTION LINE 55 FEET; THENCE EAST EXTERIOR ANGLE OF 92° A DISTANCE OF 762.5 FEET AND TO THE SECTION LINE;; THENCE NORTH 30 FEET TO PLACE OF BEGINNING, SAID TRACT OF LAND CONTAINS 6.2 ACRES MORE OR LESS, AND THE ABOVE PLAT IS A TRUE EXHIBIT OF SAID SURVEY AS FAR AS IT IS KNOWN TO ME.

SURVEY CALLED FOR HAROLD YOWELL

SIGNED THIS 24th DAY OF MARCH, 1975

Melvin Ferguson
MELVIN FERGUSON
PROFESSIONAL ENGINEER
MCPHERSON, KANSAS

