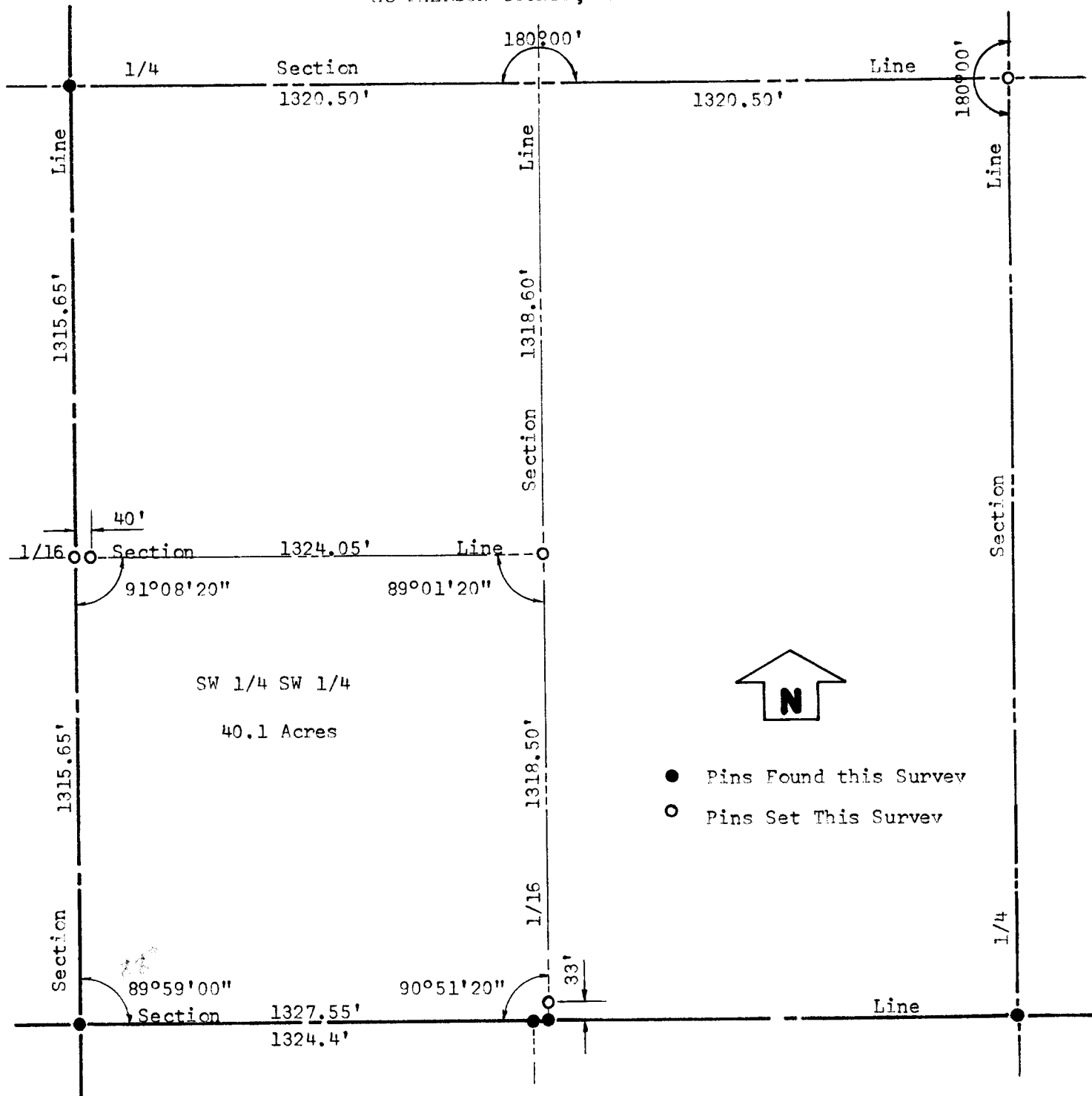


A SURVEY OF THE SW 1/4, SW 1/4
SECTION 16, T19S, R3W
MC PHERSON COUNTY, KANSAS



State of Kansas)
County of McPherson) SS

I, Melvin Ferguson, County Engineer of McPherson County, Kansas, do hereby certify that under my supervision a survey was made of the SW 1/4, SW 1/4 of Section 16, T19S, R3W of the 6th P.M. and the above plat is a true exhibit of said survey as far as it is known to me.

Survey called for by Darrell Thompson

Signed on this 25th day of April, 1974

Melvin Ferguson
Melvin Ferguson, P. E.
County Engineer
McPherson County, Kansas

