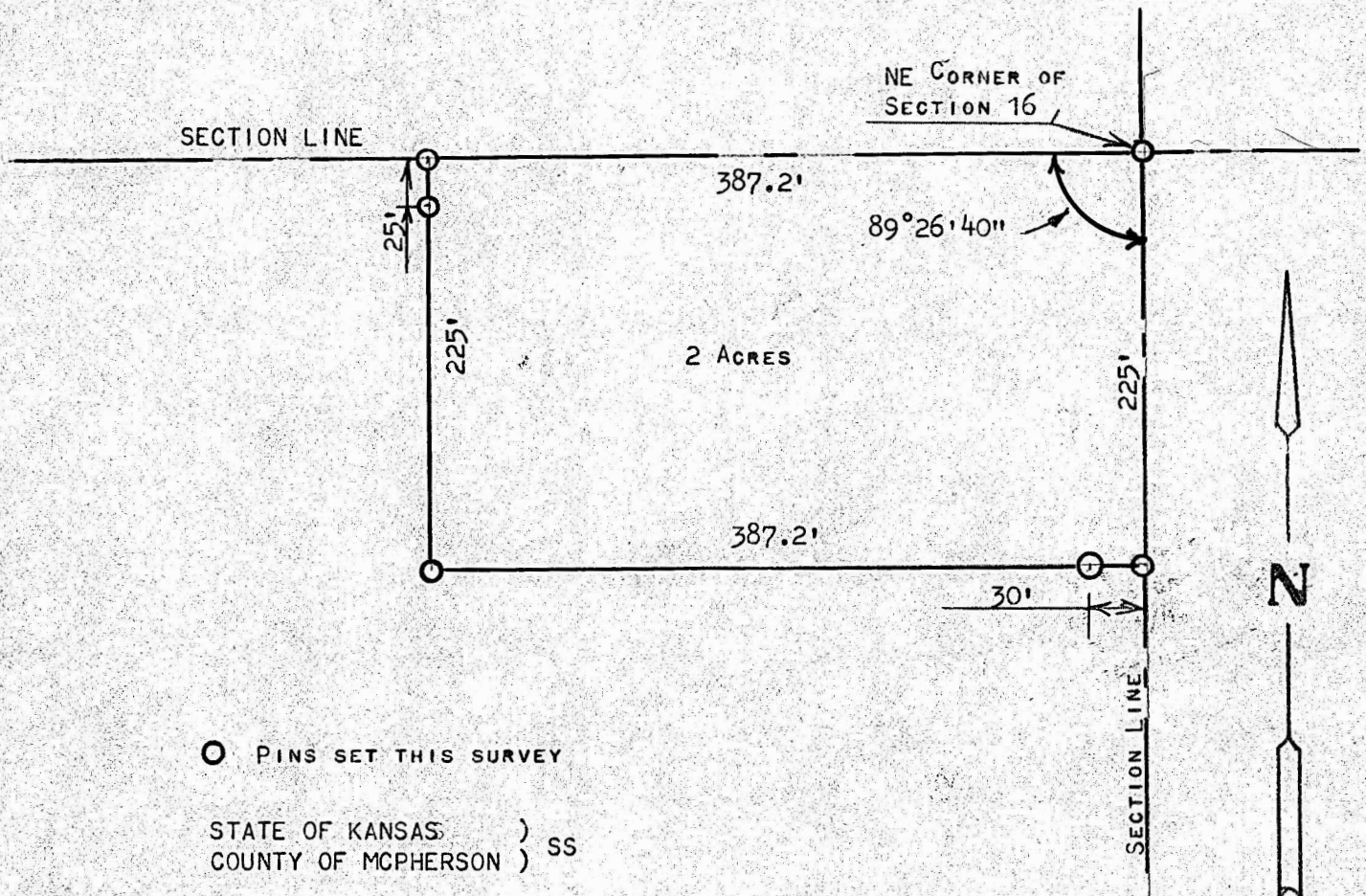


A SURVEY OF A TRACT OF LAND IN THE  
NE 1/4, SECTION 16, T19S, R2W,  
MCIPHERSON COUNTY, KANSAS



O PINS SET THIS SURVEY

STATE OF KANSAS )  
COUNTY OF MCIPHERSON ) SS

I, FRANCIS RANKIN, PROFESSIONAL ENGINEER OF THE STATE OF KANSAS, DO HEREBY CERTIFY THAT UNDER MY SUPERVISION A SURVEY WAS MADE OF A TRACT OF LAND IN THE NE 1/4, SECTION 16, T19S, R2W OF THE 6TH P.M. AND DESCRIBED AS FOLLOWS:  
BEGINNING AT THE NE CORNER OF THE NE 1/4 OF SAID SECTION 16, T19S, R2W; THENCE WEST ON SECTION LINE 387.2 FEET; THENCE SOUTH PARALLEL WITH SECTION LINE 225.0 FEET; THENCE EAST TO SECTION LINE 387.2 FEET; THENCE NORTH ON SECTION LINE 225.0 FEET TO PLACE OF BEGINNING SAID TRACT OF LAND CONTAINS 2.0 ACRES MORE OR LESS AND THE ABOVE PLAT IS TRUE EXHIBIT OF SAID SURVEY AS FAR AS IT IS KNOWN TO ME.

SURVEY REQUESTED BY RUSSELL WALLINE

SIGNED THIS 11 DAY OF JULY, 1973

*Francis Rankin P.E.*  
FRANCIS RANKIN  
PROFESSIONAL ENGINEER  
MCIPHERSON, KANSAS

