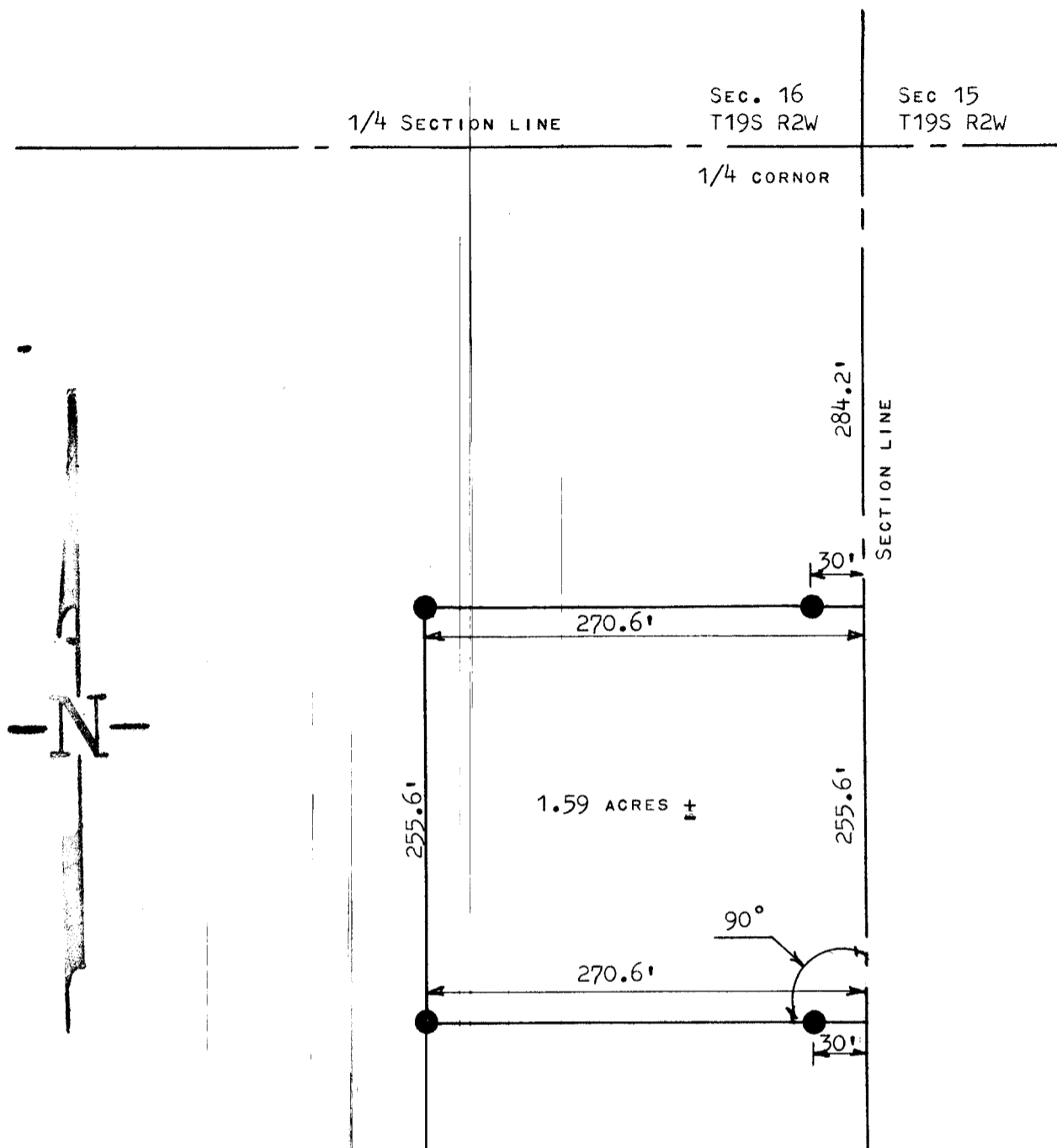


A SURVEY IN THE SE 1/4  
SEC. 16 T19S R2W



● PINS SET IS SURVEY

STATE OF KANSAS)  
McPHERSON COUNTY) SS

I, FRANCIS R. RANKIN, PROFESSIONAL ENGINEER, OF THE STATE OF KANSAS,  
DO HEREBY CERTIFY THAT I DID CAUSE TO BE DONE ON THE 5TH DAY OF SEPTEMBER,  
1962, A SURVEY IN THE SE 1/4 SECTION 16 T19S R2W OF THE 6TH P.M. AND DES-  
CRIBED AS FOLLOWS:

BEGINNING AT A POINT 284.2 FEET SOUTH OF THE 1/4 CORNER BETWEEN SEC. 15 & 16  
T19S R2W, THENCE SOUTH 255.6 FEET ON SECTION LINE; THENCE WEST AT AN ANGLE  
OF 90°0' AND A DISTANCE 270.6 FEET; THENCE NORTH 255.6 FEET; THENCE EAST 270.6  
FEET TO THE PLACE OF BEGINNING, SAID TRACT CONTAINING 1.59 ACRES MORE OR LESS  
AND THAT THE ACCOMPANYING PLAT IS A TRUE EXHIBIT OF SAID SURVEY  
IT IS KNOWN TO ME.

SURVEY CALLED FOR BY DALE D. KOEHN

SIGNED THIS 6 DAY OF September 1962



*Francis R. Rankin*  
FRANCIS RANKIN  
PROFESSIONAL ENGINEER  
McPHERSON, KANSAS

MICROFILM