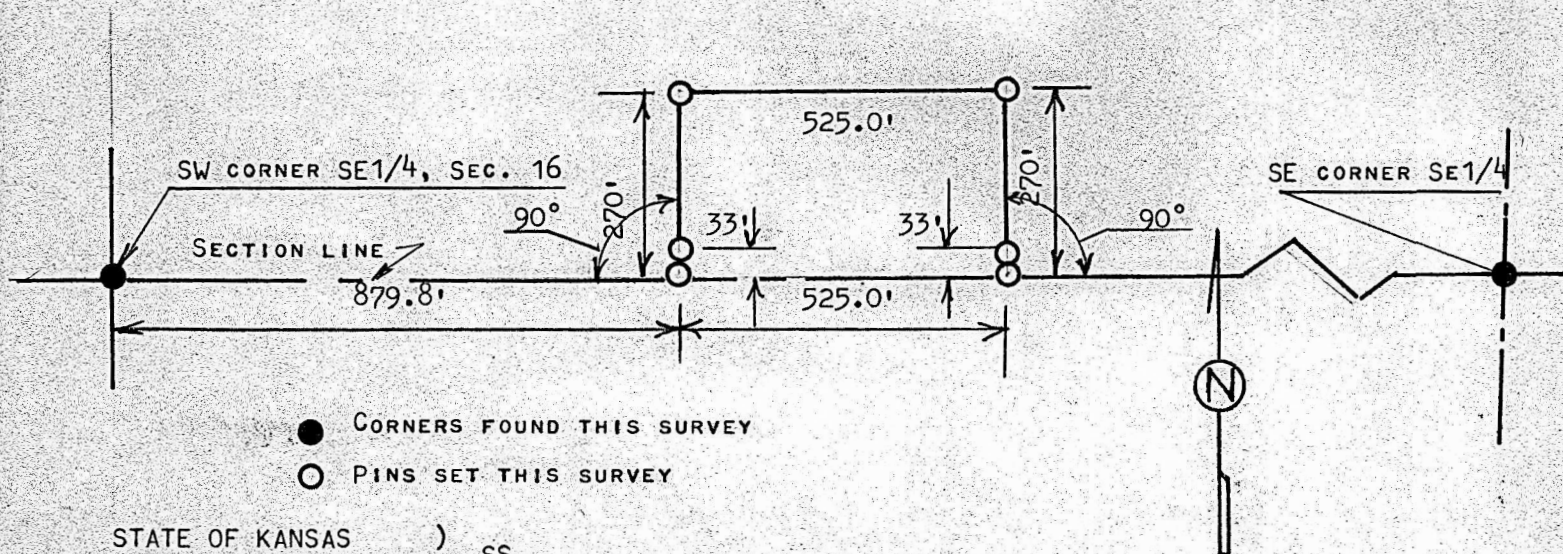


A SURVEY OF A TRACT OF LAND IN THE  
S1/2, S1/2, SE1/4, SECTION 16, T18S, R5W  
MCIPHERSON COUNTY, KANSAS



STATE OF KANSAS )  
COUNTY OF MCIPHERSON ) SS

I, MELVIN FERGUSON, PROFESSIONAL ENGINEER OF THE STATE OF KANSAS DO HEREBY CERTIFY THAT UNDER MY SUPERVISION A SURVEY OF A TRACT OF LAND IN THE S1/2, S1/2, SE1/4, SECTION 16, T18S, R5W OF THE 6TH P.M. AND DESCRIBED AS FOLLOWS:

BEGINNING 879.8 FEET EAST OF THE SW CORNER OF THE S1/2, S1/2, SE1/4, SECTION 16, T18S, R5W; THENCE RIGHT ANGLE TO THE NORTH 270.0 FEET; THENCE EAST PARALLEL WITH SECTION LINE 525.0 FEET; THENCE SOUTH TO SECTION LINE 270.0 FEET; THENCE WEST ON SECTION LINE 525.0 FEET AND TO PLACE OF BEGINNING SAID TRACT OF LAND CONTAINS 3.25 ACRES MORE OR LESS, AND THAT THE ACCOMPANYING PLAT IS A TRUE EXHIBIT OF SAID SURVEY AS FAR AS IT IS KNOWN TO ME.  
SURVEY CALLED FOR BY TONY WEDEL

SIGNED THIS 16<sup>th</sup> DAY OF MARCH, 1983  
Melvin Ferguson  
MELVIN FERGUSON  
PROFESSIONAL ENGINEER  
MCIPHERSON, KANSAS

