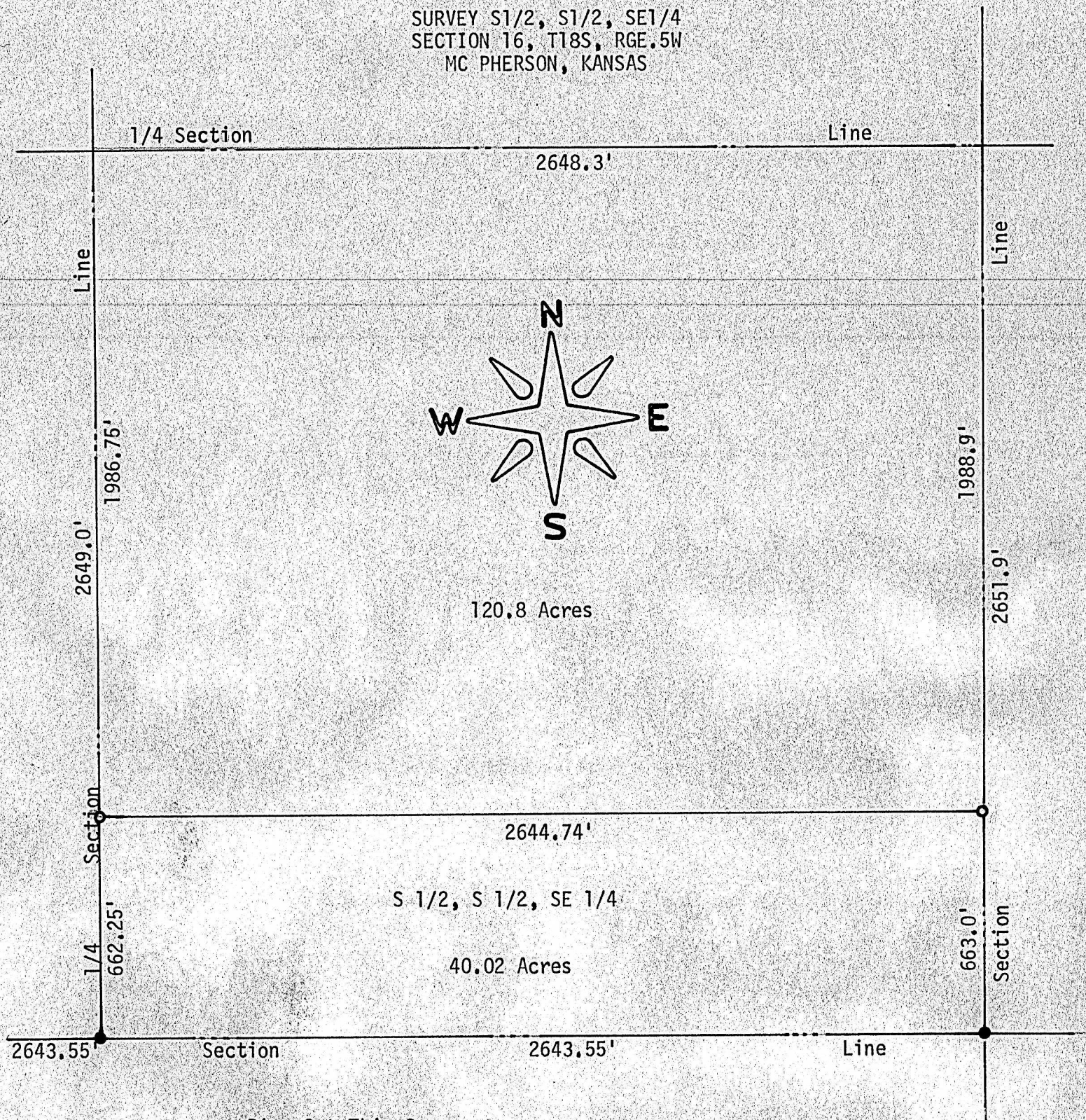


SURVEY S1/2, S1/2, SE1/4
SECTION 16, T18S, RGE.5W
MC PHERSON, KANSAS



State of Kansas)
County of McPherson) SS

I, F. R. Rankin, County Engineer of McPherson, Kansas, do hereby certify that under my supervision a survey was made of the S1/2, S1/2, SE1/4 Section 16, T18S, R5W of the 6th P.M. and the above plat is a true exhibit of said survey as far as it is known to me.

Survey requested by Victor Larson

Signed this 30 day of November, 1972

F. R. Rankin
F. R. Rankin, P. E.
County Engineer
McPherson, Kansas

