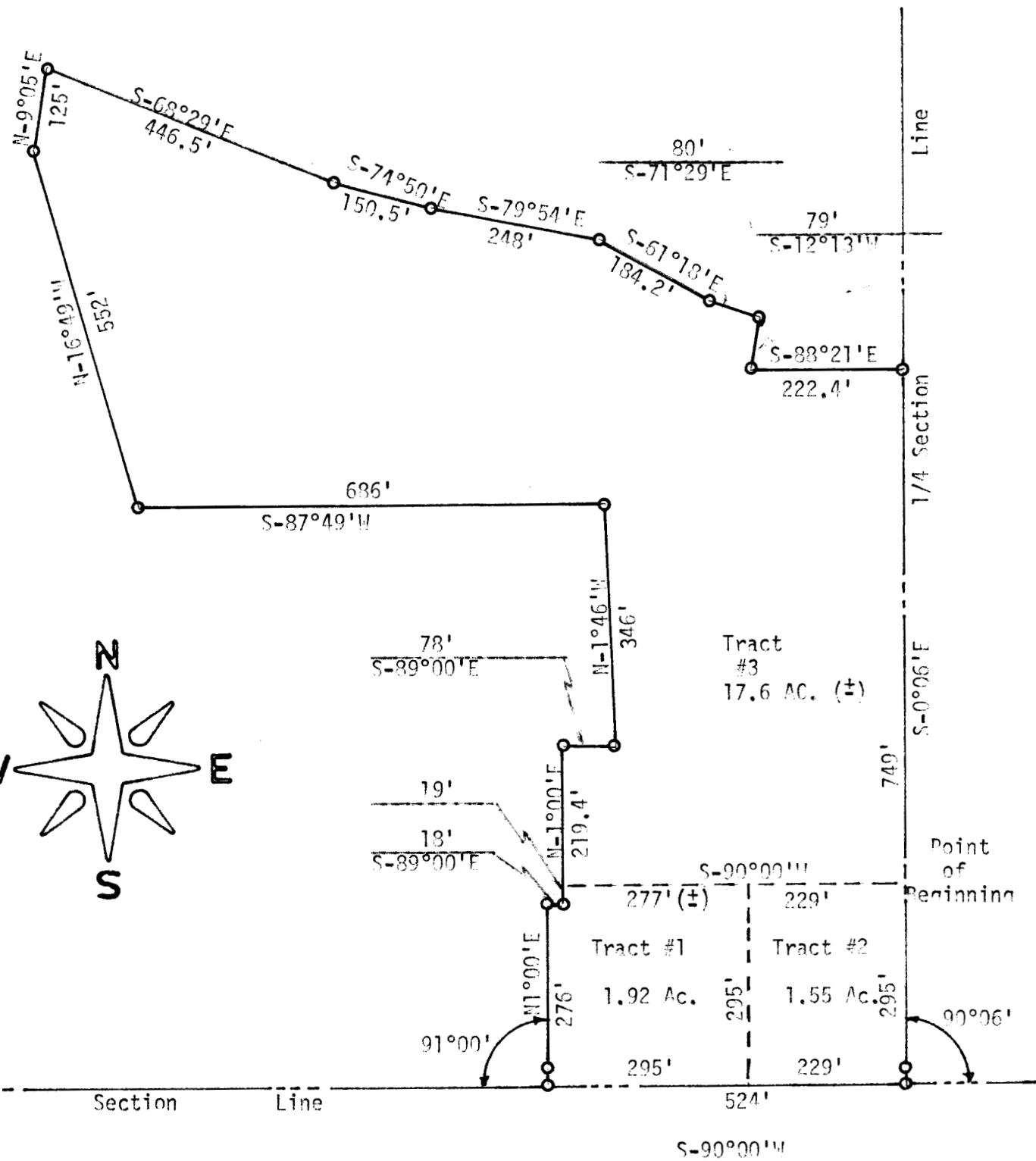


TRACTS OF LAND IN THE SW 1/4  
SECTION 16, T18S, R5E  
MC PHERSON COUNTY, KANSAS



○ Pins Set This Survey

State of Kansas )  
County of McPherson ) SS

I, Rankin, County Engineer of McPherson County, Kansas, do hereby certify  
under my supervision a survey was made in the SW 1/4 Section 16, T18S, R5E  
6th P.M. and described on the attached sheet.

called for by Dean Fasnacht

this 6 day of October 1972

*Rankin*  
Rankin, P. E.  
Engineer  
on, Kansas