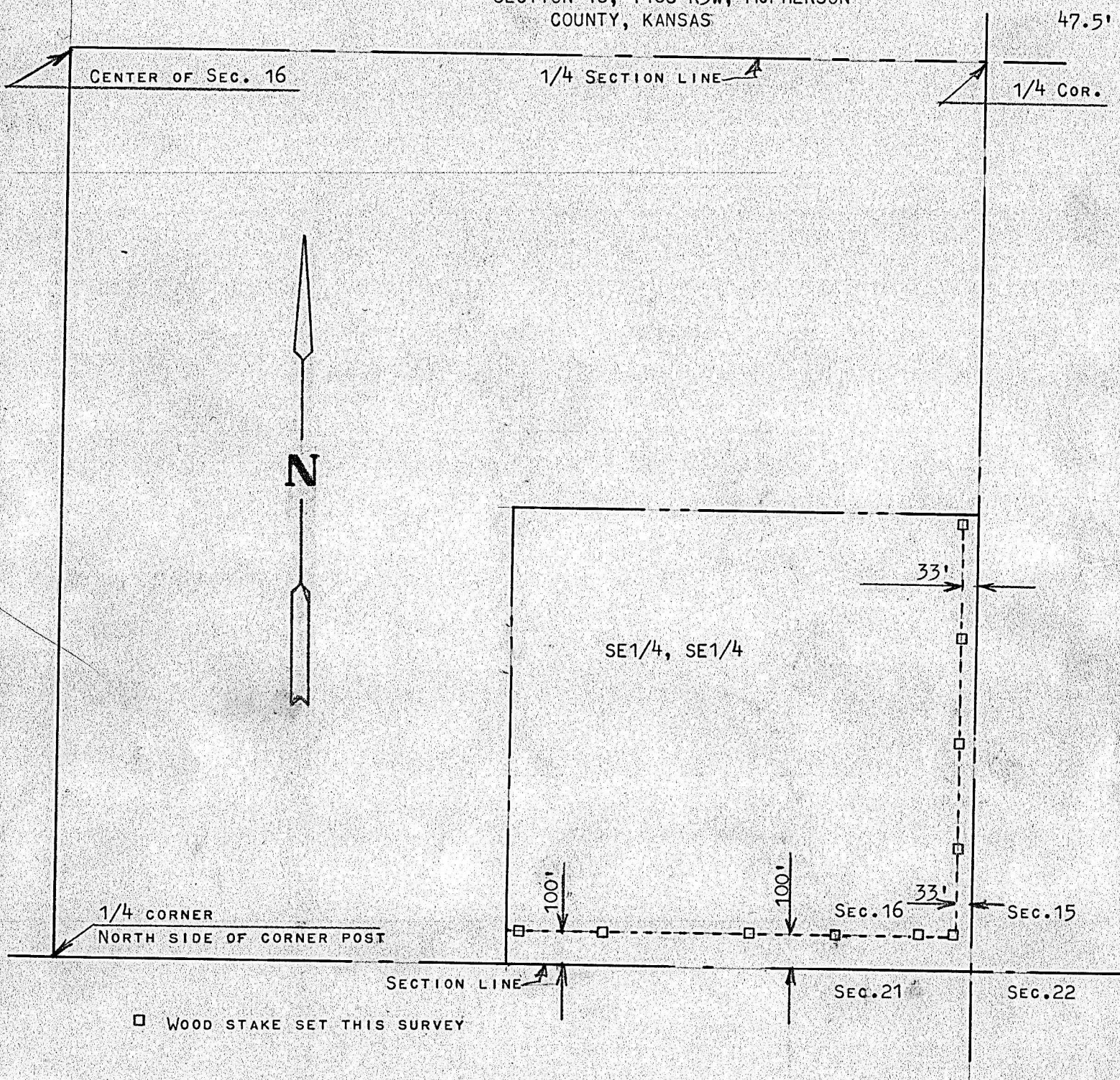


A SURVEY IN THE SE1/4, SE1/4
SECTION 16, T18S R3W, McPHERSON
COUNTY, KANSAS



STATE OF KANSAS)
COUNTY OF MCPHERSON) SS

I, FRANCIS RANKIN, PROFESSIONAL ENGINEER OF THE STATE OF KANSAS, DO HEREBY CERTIFY THAT UNDER MY SUPERVISION A SURVEY WAS DONE TO DETERMINE THE SOUTH AND EAST RIGHT OF WAY TO THE SE1/4, SE1/4 SECTION 16, T18S R3W OF THE 6TH P.M., AND THAT THE ACCOMPING PLAT IS A TRUE EXHIBIT OF SAID SURVEY AS FAR AS IT IS KNOWN TO ME.

SURVEY CALLED FOR BY DARRELL THOMPSON

SIGNED THIS 15 DAY OF APRIL, 1968

Francis Rankin
FRANCIS RANKIN
PROFESSION ENGINEER
MCPHERSON, KANSAS

