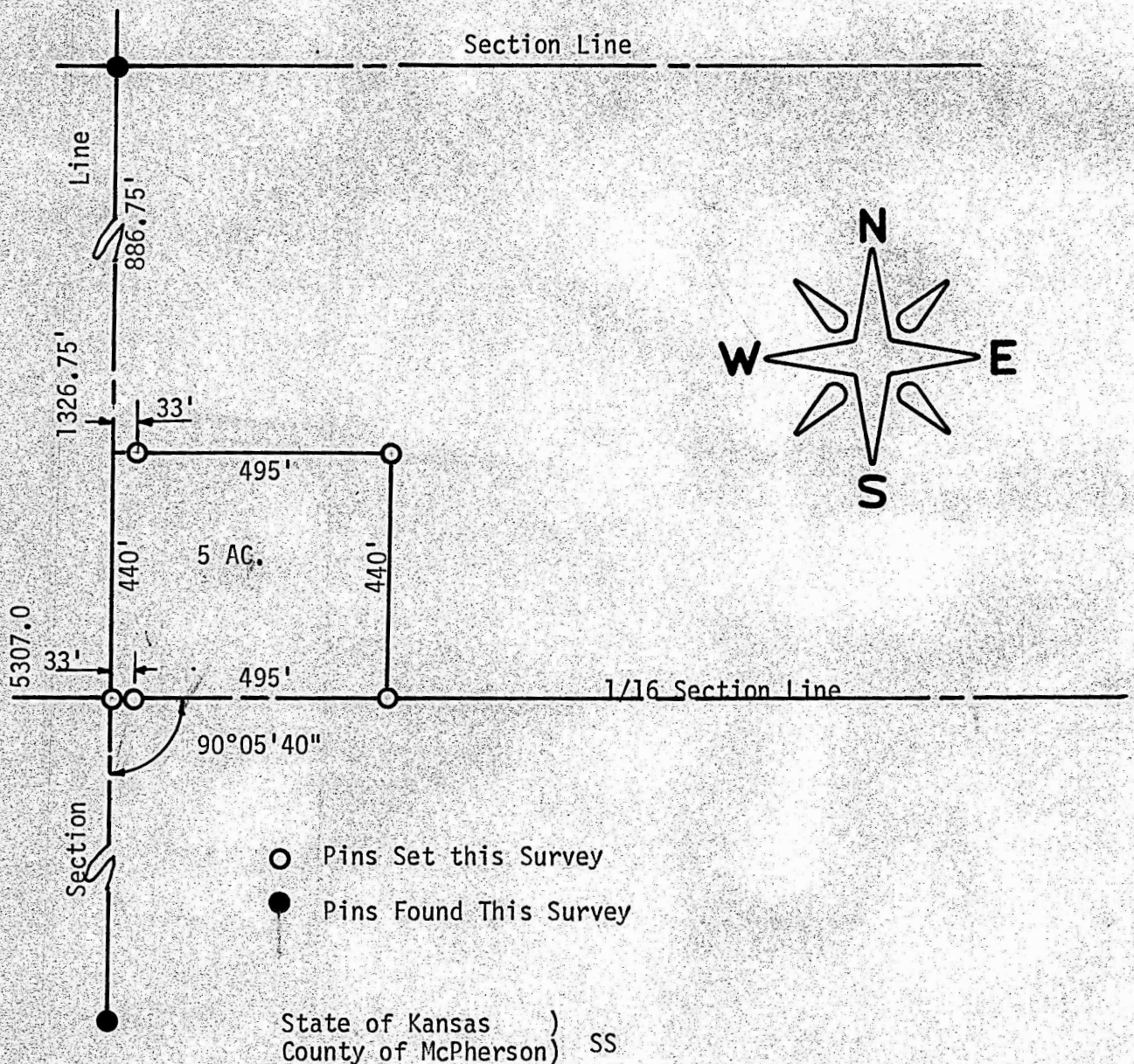


A SURVEY IN THE N 1/2 NW 1/4
OF SECTION 15, T21S, RGE. 5W
MC PHERSON COUNTY, KANSAS



I, F. R. Rankin, County Engineer of McPherson County, Kansas, do hereby certify that under my supervision a survey was made in the N 1/2 of the NW 1/4 of Section 15, T21S, R5W of the 6th P.M. and described as follows:

Beginning at the SW corner of the N 1/2 NW 1/4; thence East on 1/16th Section Line, 495.0 feet; thence North, parallel with Section Line, 440.0 feet; thence West, to Section Line, 495.0 feet; thence South, on Section Line, 440.0 feet to the place of beginning. Said tract contains five acres more or less. The above plat is a true exhibit of said survey as far as it is known to me.

Survey called for by Hugo Hofmeier

Signed on this 17 day of April, 1972.

F. R. Rankin
F. R. Rankin, P. E.
County Engineer
McPherson, Kansas

RANKIN
LICENSED
799
KANSAS
PROFESSIONAL ENGINEER

11080680