

Saved 11/18/2014 3:23:01 PM by KLOUTZEN
Plot Date & Time Tuesday, November 18, 2014 3:25:03 PM Dwg Path U:\LDP\GSSFILES\2014\20140605 C3d\dwg\20140605 KP Auto SPC 1502 (ModtoGnd) No Datum

21ST AVENUE

NW Cor. SW 1/4
Sec. 15, T21S, R2W
Fd. 60d Spike replaced by 5/8" Rebar
Origin: Unknown; fit calculated location

N 89°19'50" E 2645.51 (M)

NE Cor. SW 1/4
Sec. 15, T21S, R2W
Fd. Bent 1/2" Rebar
from County Ties Dated April 1970.
Replaced by 5/8" Rebar

N 1/2
80.432 Acres

S 00°25'44" E 1323.88 (C)

N 00°34'47" W 1326.60

SW Cor. N 1/2 SW 1/4
Sec. 15, T21S, R2W

S 89°16'16" W 2642.03 (C)

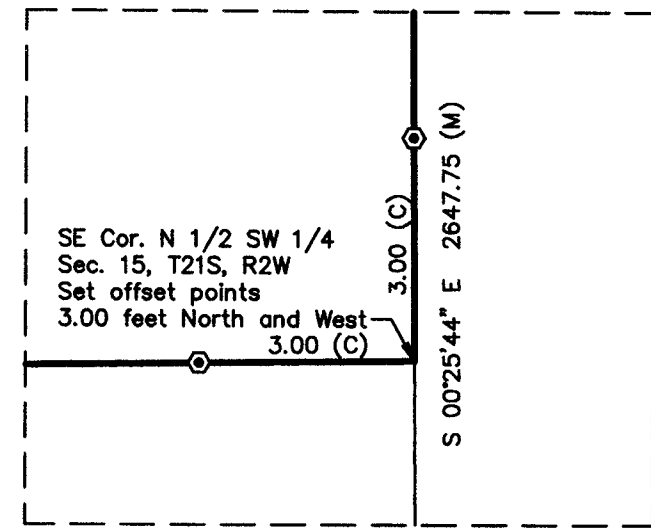
SE Cor. N 1/2 SW 1/4
Sec. 15, T21S, R2W
SEE DETAIL

S 1/2

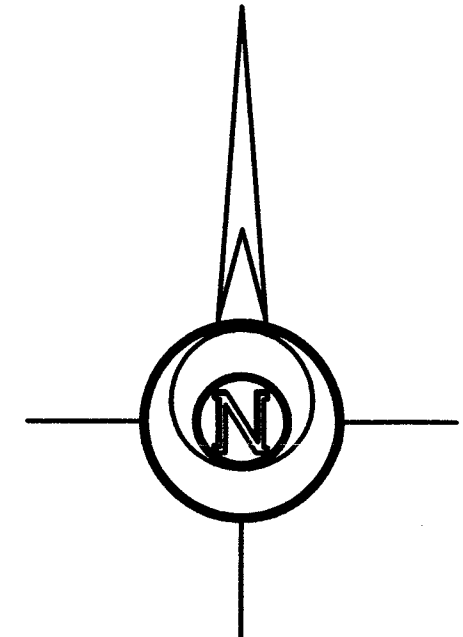
SW Cor. SW 1/4
Sec. 15, T21S, R2W
Fd. 1/2" Rebar
from Survey by James D. Hestermann
Ruggles & Bohm P.A. Project Number 3104 E
October 2, 2007

SE Cor. SW 1/4
Sec. 15, T21S, R2W
Fd. 1/2" Rebar
from Survey by James D. Hestermann
Ruggles & Bohm P.A. Project Number 3104 E
October 2, 2007

S 89°12'42" W 2638.56 (M)



DETAIL
SCALE 1:50



-200 0 200 400 600

BASIS OF BEARING = NAD 83 KANSAS SOUTH ZONE
LEGEND

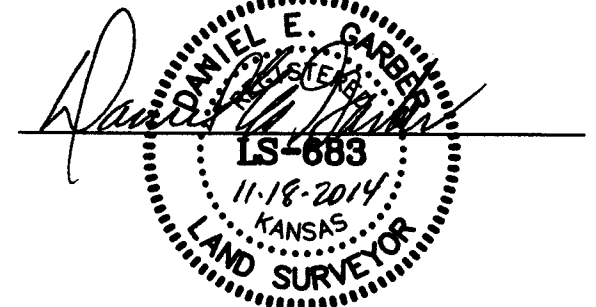
- △ - Sectional Monument Found
- ▲ - Section Monument Set (5/8" x 24" Iron Rebar w/ G.S.S. Cap)
- - 5/8" x 24" Iron Rebar Set w/ Yellow G.S.S. Cap
- ⊙ - Set Blue Cap
- (C) - Calculated
- (M) - Measured

DESCRIPTION OF RECORD:

The North Half (N/2) of the Southwest Quarter (SW 1/4) of Section Fifteen (15), Township Twenty-one (21) South, Range Two (2) West of the 6th P.M. containing 80.432 Acres

SURVEYOR'S CERTIFICATE:

I hereby certify this plat to be a true, correct and complete representation of the property described hereon, as surveyed under my supervision, this 18th day of November, 2014.



Prepared For: SAM GOERING		Description: THE N 1/2 SW 1/4 SECTION 15, T21S, R2W MCPHERSON COUNTY, KANSAS	
Prepared By: GSS		Garber Surveying Service, P.A.	
HUTCHINSON (Main Office) 2908 North Plum St. 67502 Ph. 620-665-7032 Fax 620-663-7401		McPHERSON (Branch Office) 115 East Martin 67460 Ph. 620-241-4441 Fax 620-241-4458	
NEWTON (Branch Office) 511 North Poplar St. 67114 Ph. 316-283-5053 Fax 316-283-5073			
Drawn By: CSS	Scale: 1"=200'	Date of Field Work: September 4, 2014	Job No:
Checked By: DEG	Date: 11/18/2014	Sheet 1 of 1 Sheet(s)	G2014-605