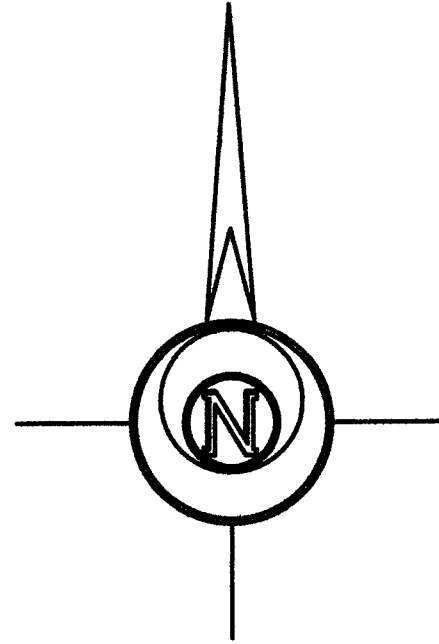


Saved 12/1/2016 4:13:25 PM by KLOUTZEN
Plot Date & Time Friday, December 09, 2016 8:21:15 AM Dwg Path U:\DD\GSSFILES\2016\20160756 C3.dwg 20160756 Auto S Gnd_Client Edits

LEGEND

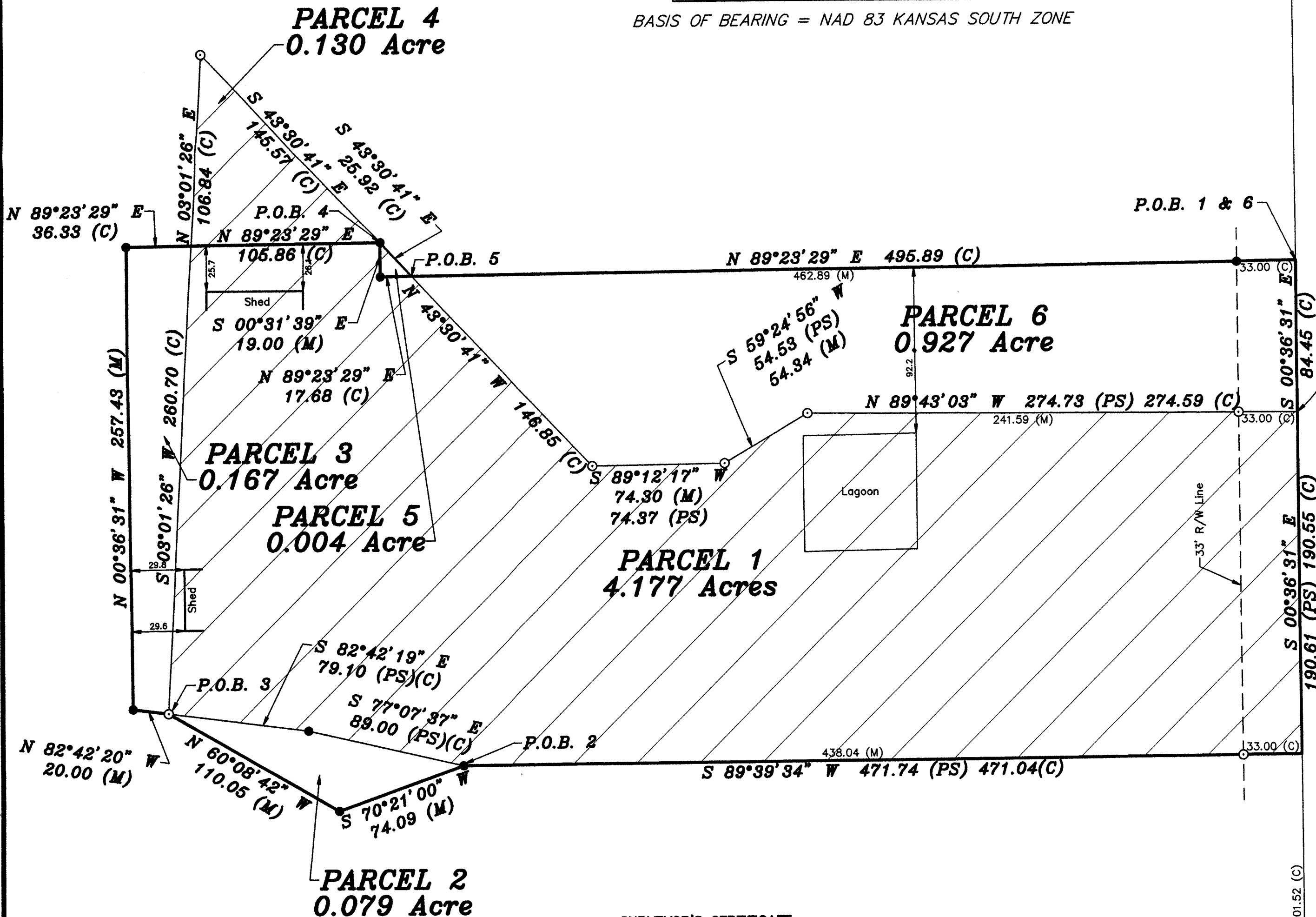
- △ - Sectional Monument Found
- ▲ - Section Monument Set (5/8" x 24" Iron Rebar w/G.S.S. Cap)
- - Survey Monument Found
- - 5/8" x 24" Iron Rebar Set w/G.S.S. Cap
- (C) - Calculated
- (M) - Measured
- (PS) - Previous Survey by Williams B. Heller June 6, 2006
- P.O.B. - Point of Beginning
- P.O.C. - Point of Commencement
- ▨ - Existing Parcel (Bk. 640, Pg. 6044)



BASIS OF BEARING = NAD 83 KANSAS SOUTH ZONE

P.O.C. 1, 2, 3, 4, 5, 6

NE Cor. NE 1/4
Sec. 15, T20S, R2W
Reset Magnail from ties &
Per GSS Project #G2016-120



SURVEYOR'S CERTIFICATE:

I hereby certify this plat to be a true, correct and complete representation of the property described hereon, as surveyed under my supervision, this 9th day of December, 2016.



SE Cor. NE 1/4
Sec. 15, T20S, R2W
Fd. Magnail
Origin: (PS)

DESCRIPTIONS:

PARCEL 1 (Overall Resulting Parcel)

A portion of the Northeast Quarter of Section 15, Township 20 South, Range 2 West of the 6th Principal Meridian, McPherson County, Kansas described as follows:

Commencing at the Northeast corner of said Northeast Quarter; thence on a NAD 83 Kansas South Zone bearing of South 00°36'31" East on the East line of said Northeast Quarter a distance of 346.11 feet to the point of beginning; thence continuing South 00°36'31" East on said East line a distance of 275.00 feet; thence South 89°39'34" West a distance of 471.04 feet; thence South 70°21'00" West a distance of 74.09 feet; thence North 60°08'42" West a distance of 110.05 feet; thence North 82°42'20" West a distance of 20.00 feet; thence North 00°36'31" West a distance of 257.43 feet; thence North 89°23'29" East perpendicular to said East line a distance of 142.19 feet; thence South 00°31'39" East a distance of 19.00 feet; thence North 89°23'29" East a distance of 513.57 feet to the point of beginning.

Containing **4.177 Acres** and subject to a road right of way easement across the East 33.00 feet thereof and any other easements or restrictions of record.

PARCEL 2

A portion of the Northeast Quarter of Section 15, Township 20 South, Range 2 West of the 6th Principal Meridian, McPherson County, Kansas described as follows:

Commencing at the Northeast corner of said Northeast Quarter; thence on a NAD 83 Kansas South Zone bearing of South 00°36'31" East on the East line of said Northeast Quarter a distance of 621.11 feet; thence South 89°39'34" West a distance of 471.04 feet to the point of beginning; thence South 70°21'00" West a distance of 74.09 feet; thence North 60°08'42" West a distance of 110.05 feet; thence South 82°42'19" East a distance of 79.10 feet; thence South 77°07'37" East a distance of 89.00 feet to the point of beginning.

Containing **0.079 Acre** and subject to any easements or restrictions of record.

PARCEL 3

A portion of the Northeast Quarter of Section 15, Township 20 South, Range 2 West of the 6th Principal Meridian, McPherson County, Kansas described as follows:

Commencing at the Northeast corner of said Northeast Quarter; thence on a NAD 83 Kansas South Zone bearing of South 00°36'31" East on the East line of said Northeast Quarter a distance of 621.11 feet; thence South 89°39'34" West a distance of 471.04 feet; thence South 70°21'00" West a distance of 74.09 feet; thence North 60°08'42" West a distance of 110.05 feet to the point of beginning; thence North 82°42'20" West a distance of 20.00 feet; thence North 00°36'31" West a distance of 257.43 feet; thence North 89°23'29" East perpendicular to said East line a distance of 36.33 feet; thence South 03°01'26" West a distance of 260.70 feet to the point of beginning.

Containing **0.167 Acre** and subject to any easements or restrictions of record.

PARCEL 4

A portion of the Northeast Quarter of Section 15, Township 20 South, Range 2 West of the 6th Principal Meridian, McPherson County, Kansas described as follows:

Commencing at the Northeast corner of said Northeast Quarter; thence on a NAD 83 Kansas South Zone bearing of South 00°36'31" East on the East line of said Northeast Quarter a distance of 346.11 feet; thence South 89°23'29" West perpendicular to said East line a distance of 513.57 feet; thence North 00°31'39" West a distance of 19.00 feet to the point of beginning; thence South 89°23'29" West a distance of 105.86 feet; thence North 03°01'26" East a distance of 106.84 feet; thence South 43°30'41" East a distance of 145.57 feet to the point of beginning.

Containing **0.130 Acre** and subject to any easements or restrictions of record.

PARCEL 5

A portion of the Northeast Quarter of Section 15, Township 20 South, Range 2 West of the 6th Principal Meridian, McPherson County, Kansas described as follows:

Commencing at the Northeast corner of said Northeast Quarter; thence on a NAD 83 Kansas South Zone bearing of South 00°36'31" East on the East line of said Northeast Quarter a distance of 346.11 feet; thence South 89°23'29" West perpendicular to said East line a distance of 495.89 feet to the point of beginning; thence continuing South 89°23'29" West a distance of 17.68 feet; thence North 00°31'39" West a distance of 19.00 feet; thence South 43°30'41" East a distance of 25.92 feet to the point of beginning.

Containing **0.004 Acre** and subject to any easements or restrictions of record.

PARCEL 6

A portion of the Northeast Quarter of Section 15, Township 20 South, Range 2 West of the 6th Principal Meridian, McPherson County, Kansas described as follows:

Commencing at the Northeast corner of said Northeast Quarter; thence on a NAD 83 Kansas South Zone bearing of South 00°36'31" East on the East line of said Northeast Quarter a distance of 346.11 feet; thence continuing South 00°36'31" East a distance of 84.45 feet; thence North 89°43'03" West a distance of 274.59 feet; thence South 59°24'56" West a distance of 54.34 feet; thence South 89°12'17" West a distance of 74.30 feet; thence North 43°30'41" West a distance of 146.85 feet; thence North 89°23'29" East a distance of 495.89 feet to the point of beginning.

Containing **0.927 Acre** and subject to any easements or restrictions of record.

Prepared For:

SHEETS ADAMS REALTORS

Description:

**A PORTION OF THE NE 1/4
SECTION 15, T20S, R2W
McPHERSON COUNTY, KANSAS**

Prepared By:



Garber Surveying Service, P.A.

HUTCHINSON (Main Office) 2908 North Plum St. 67502 Ph. 620-663-7032 Fax 620-663-7401
McPHERSON (Branch Office) 115 East Marlin 67460 Ph. 620-241-4441 Fax 620-241-4458
NEWTON (Branch Office) 511 North Poplar St. 67114 Ph. 316-283-5053 Fax 316-283-5073

Drawn By: KLL

Scale: 1"=50'

Date of Field Work: November 17, 2016

Job No:

Checked By: NDS

Date: 12/09/2016

Sheet 1 of 1 Sheet(s)

G2016-756