

DESCRIPTION:

A portion of the Southeast Quarter of Section 15, Township 20 South, Range 1 West of the 6th Principal Meridian, McPherson County, Kansas described as follows:

Commencing at the Southwest corner of said Southeast Quarter; thence on a NAD 83 Kansas South Zone bearing of North 88°44'14" East on the south line of said Southeast Quarter a distance of 786.37 feet to the point of beginning; thence North 00°31'55" East a distance of 566.28 feet; thence North 88°44'14" East parallel with said South line a distance of 800.93 feet; thence South 00°00'08" East a distance of 566.14 feet to said South line; thence South 88°44'14" West on said South line a distance of 806.21 feet to the point of beginning.

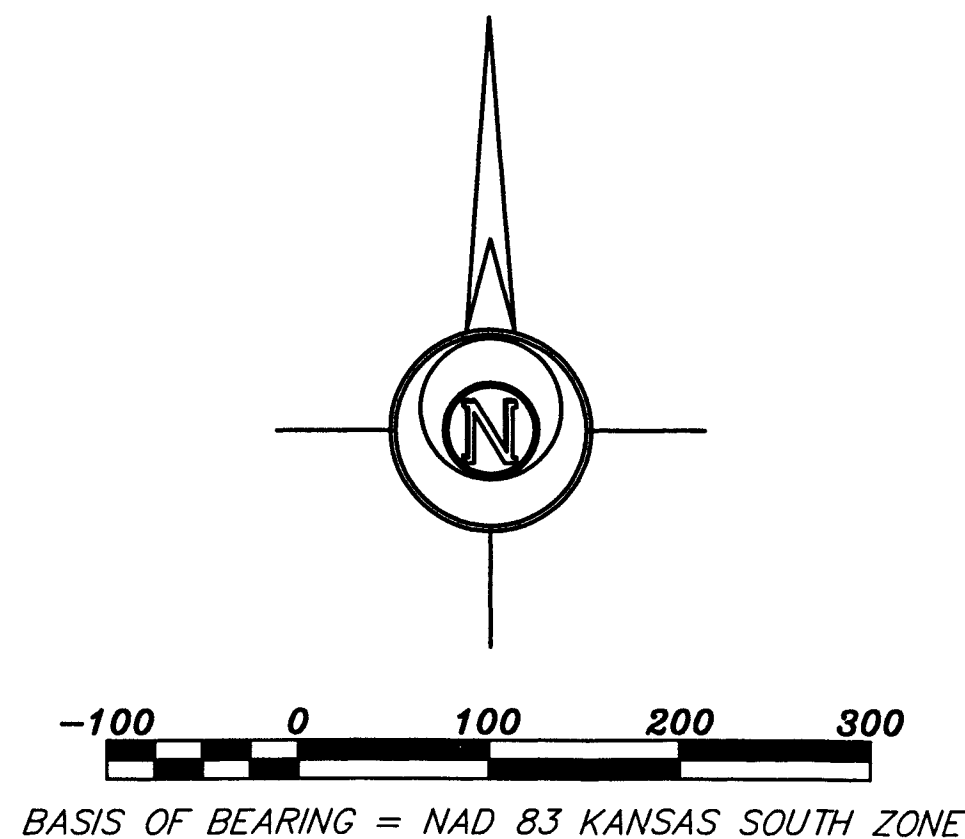
Containing **10.441 Acres** and subject to a road right of way easement across the South 33.00 feet thereof, and any other easements or restrictions of record.

Proposed Sanitary Sewer Easement

A portion of the Southeast Quarter of Section 15, Township 20 South, Range 1 West of the 6th Principal Meridian, McPherson County, Kansas described as follows:

Commencing at the Southwest corner of said Southeast Quarter; thence on a NAD 83 Kansas South Zone bearing of North 88°44'14" East on the south line of said Southeast Quarter a distance of 786.37 feet; thence North 00°31'55" East a distance of 76.60 feet to the point of beginning; thence continuing North 00°31'55" East a distance of 21.62 feet; thence South 67°09'47" East a distance of 53.31 feet; thence South 87°03'32" East a distance of 201.62 feet; thence North 01°57'03" West a distance of 73.12 feet; thence South 88°38'56" East a distance of 61.87 feet; thence South 01°17'46" East a distance of 78.84 feet; thence South 77°59'56" West a distance of 61.82 feet; thence North 87°03'32" West a distance of 206.84 feet; thence North 67°09'47" West a distance of 48.62 feet to the point of beginning.

Containing **0.238 Acre** and subject to any easements or restrictions of record.

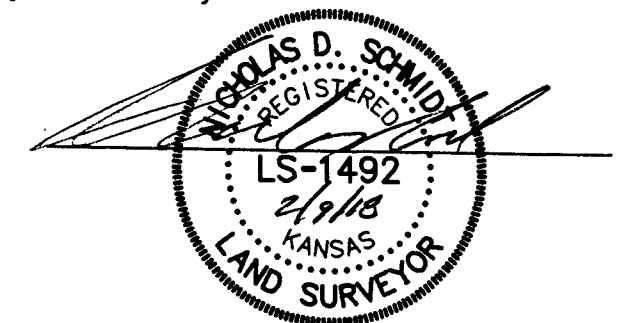


LEGEND

- △ - Sectional Monument Found
- - Fd. 5/8" Rebar w/GSS Cap
- - 5/8" x 24" Iron Rebar Set w/G.S.S. Cap
- (C) - Calculated
- (M) - Measured
- (PS) - Previous Survey GSS Project #G2017-436
- P.O.B. - Point of Beginning
- P.O.C. - Point of Commencement
- CO - Sanitary Sewer Cleanout

SURVEYOR'S CERTIFICATE:

I hereby certify this plat to be a true, correct and complete representation of the property described hereon, as surveyed under my supervision, this 9th day of February 2018.



Prepared For: GEORGE VOGTS		Description: A PORTION OF THE SE SECTION 15, T20S, R1W MCPHERSON COUNTY, KANSAS	
Prepared By: GSS		Garber Surveying Service, P.A.	
HUTCHINSON (Main Office) 2908 North Plum St. 67502 Ph. 620-665-7032 Fax 620-663-7401		McPHERSON (Branch Office) 115 East Marlin 67460 Ph. 620-241-4441 Fax 620-241-4458	
NEWTON (Branch Office) 511 North Poplar St. 67114 Ph. 316-283-5053 Fax 316-283-5073			
Drawn By: KDZ	Scale: 1"=100'	Date of Field Work: February 2, 2018	Job No: G2018-60
Checked By: NDS	Date: 02/09/2018	Sheet 1 of 1 Sheet(s)	