

NW CORNER NW 1/4
SECTION 15, T19S, R5W
FOUND 1/2" REBAR
FROM COUNTY TIES

NW CORNER E 1/2 NW CORNER
SECTION 15, T19S, R5W

NE CORNER NW 1/4
SECTION 15, T19S, R5W
FOUND 1/2" REBAR
FROM COUNTY TIES

NE CORNER NE 1/4
SECTION 15, T19S, R5W
FOUND 5/8" REBAR
FROM COUNTY TIES

3RD AVENUE

MOHAWK ROAD

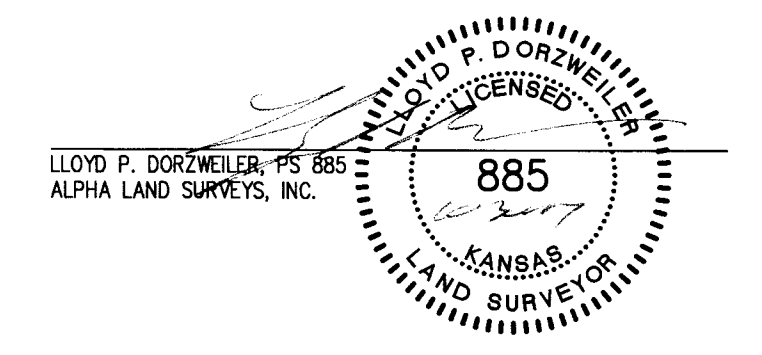
4TH AVENUE

80.505 ACRES

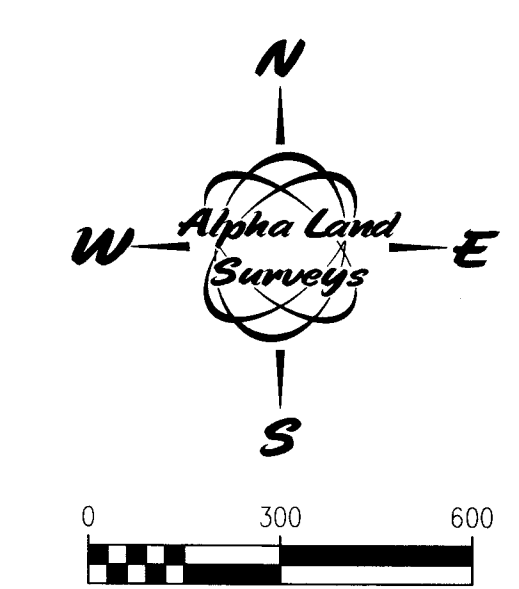
DESCRIPTION:
A SURVEY OF THE EAST HALF OF THE NORTHWEST QUARTER OF SECTION 15, TOWNSHIP 19 SOUTH, RANGE 5
WEST OF THE 6TH PRINCIPAL MERIDIAN MOHPERSON COUNTY, KANSAS.

GENERAL NOTES:
1) SECTION CORNER REFERENCE TIES FILED WITH THE KANSAS STATE HISTORICAL SOCIETY AND THE MOHPERSON
COUNTY PUBLIC WORKS DEPARTMENT AS REQUIRED BY KSA 1987 SUPP. 58-2011.
2) NO TITLEWORK WAS PROVIDED BY CLIENT FOR SUBJECT PROPERTY. ALL EASEMENTS AND RIGHTS-OF-WAYS
AFFECTING SUBJECT PROPERTY MAY NOT BE SHOWN.

SURVEYORS CERTIFICATE:
I HEREBY CERTIFY THAT THIS SURVEY WAS MADE UNDER MY SUPERVISION ON OCTOBER 10, 2017.



- LEGEND
- - FOUND SURVEY MONUMENT
 - △ - FOUND SECTION SUBDIVISION CORNER
 - ⊗ - FOUND "X" CUT IN CONCRETE
 - - SET 1/2"x24" REBAR WITH CAP
 - ▲ - STAMPED "ALPHA CLS-184"
 - ⊙ - SET "X" CUT IN CONCRETE
 - ⊞ - RIGHT-OF-WAY MARKER
 - R - RECORD
 - M - MEASURED
 - C - CALCULATED MEASURE
 - PRO - PRORATED
 - POB - POINT OF BEGINNING



BASIS OF BEARINGS IS NAD83 GRID
KANSAS SOUTH ZONE

SW CORNER NW 1/4
SECTION 15, T19S, R5W
FOUND 5/8" REBAR WITH
PLASTIC CAP STAMPED
"GARBER SURVEYING"
FROM COUNTY TIES

SW CORNER E 1/2 NW 1/4
SECTION 15, T19S, R5W

SE CORNER NW 1/4
SECTION 15, T19S, R5W

SE CORNER NE 1/4
SECTION 15, T19S, R5W

SW CORNER SE 1/4
SECTION 15, T19S, R5W
FOUND 1/2" REBAR WITH
PLASTIC CAP STAMPED
"HELLER LS 1202"
FROM COUNTY TIES

MOCCASIN ROAD

SE CORNER SE 1/4
SECTION 15, T19S, R5W
FOUND 2" ALUMINUM KNOT CAP
FROM COUNTY TIES

N.W. 15, 14-SW

SURVEY FOR:		NISLY AUCTION	
SURVEY TYPE:		BOUNDARY	
Alpha Land Surveys, Inc. 216 WEST SECOND AVENUE HUTCHINSON, KANSAS 67501 PH: (620) 728-0012 FAX: (620) 728-0413			
SURVEY DATE: 10/13/2017		PLOT DATE: 10/16/2017	
DRAWN BY: RB		PROJ. NO.: 1702158	
CHECKED BY: LPD		SHEET 1 OF 1	