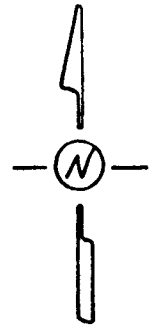


**Survey for: Sunflower Realty**

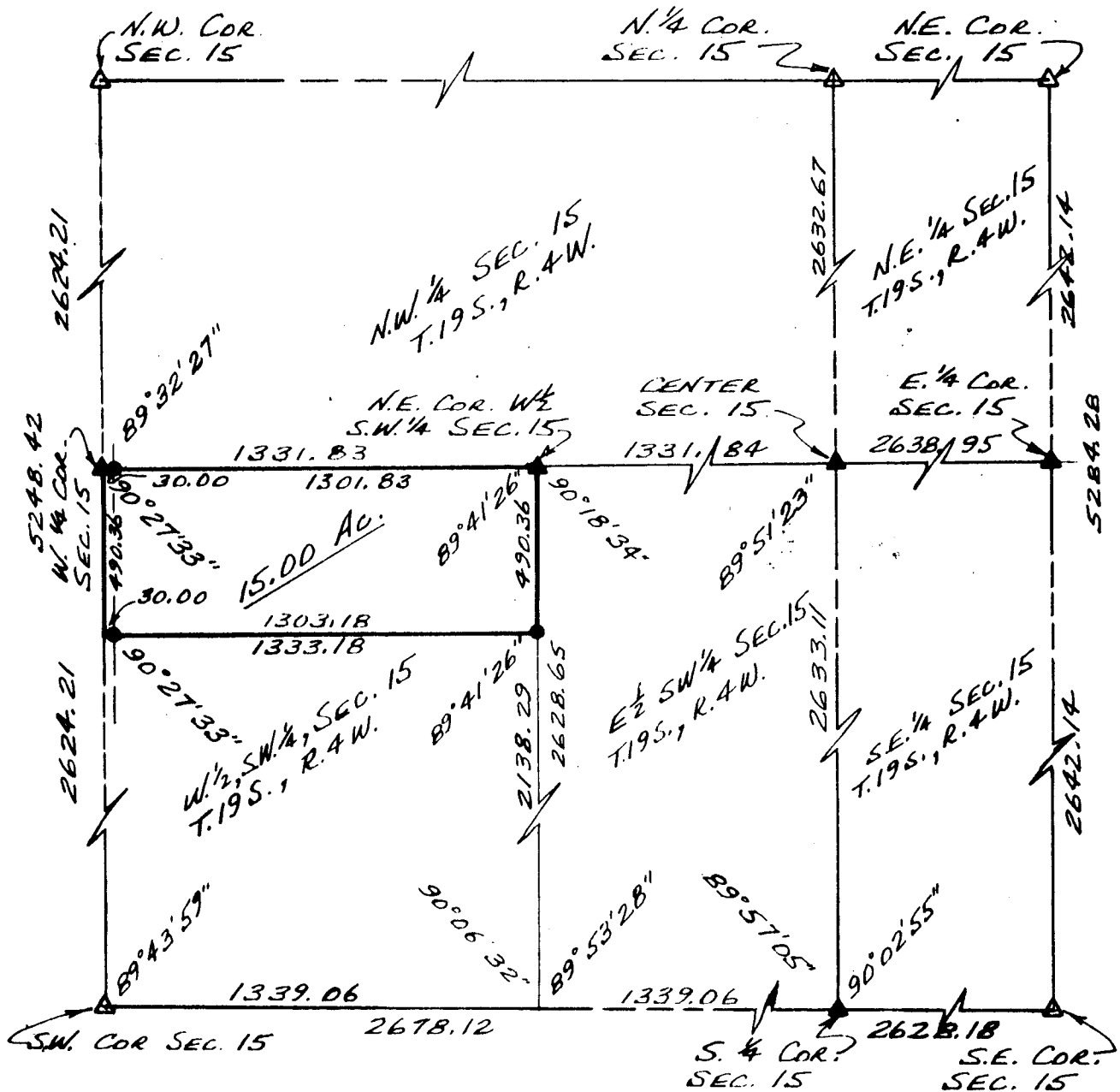
By: Garber Surveying Service, P.A.  
217 East First Avenue, Suite 9  
Hutchinson, Kansas 67501

DESCRIPTION: The North 15.00 acres of the West half of the Southwest quarter of Section 15, Township 19 South, Range 4 West of the Sixth Principal Meridian more particularly described on the attached sheet.



SCALE: 1"=500'

- △ - Section subdivision corner found
- ▲ - 5/8"x24" capped iron pin set at section subdivision corner
- - 5/8"x24" capped iron pin set at property corner.



I hereby certify this plat to be a true, correct and complete representation of the property described above and on the attached sheet, as surveyed by me, this 25th day of May, 1981.

*Daniel E. Garber*  
Daniel E. Garber RLS

