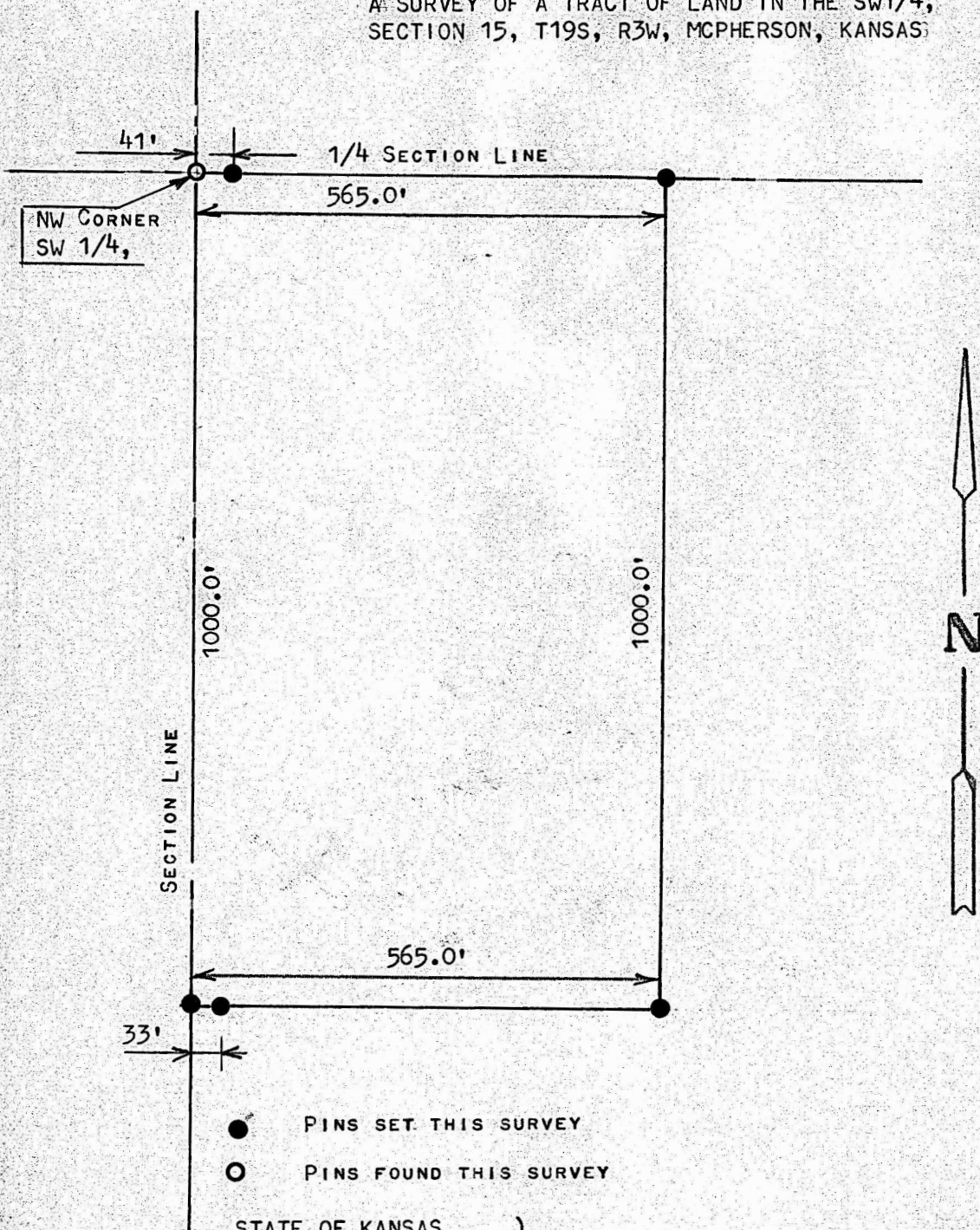


A SURVEY OF A TRACT OF LAND IN THE SW1/4,
SECTION 15, T19S, R3W, MCPHERSON, KANSAS



STATE OF KANSAS)
COUNTY OF MCPHERSON) SS

I, FRANCIS RANKIN, PROFESSIONAL ENGINEER OF THE STATE OF KANSAS
DO HEREBY CERTIFY THAT UNDER MY SUPERVISION A SURVEY WAS MADE IN THE
SW1/4, SECTION 15, T19S, R3W OF THE 6TH P.M. AND DESCRIBED AS
FOLLOWS:

BEGINNING AT THE NW CORNER OF THE SAID SW1/4, SECTION 15, T19S,
R3W; THENCE SOUTH ON SECTION LINE 1000.0 FEET; THENCE EAST
PARALLEL WITH SECTION LINE 565.0 FEET; THENCE NORTH TO 1/4
SECTION LINE 1000.0 FEET; THENCE WEST 565.0 FEET TO PLACE OF BEGINNING,
SAID TRACT OF LAND CONTAINS 13.0 ACRES MORE OR LESS, AND THAT THE
ACCOMPANYING PLAT IS TRUE EXHIBIT OF SAID SURVEY AS FAR AS IT IS KNOWN
TO ME.

SURVEY CALLED FOR BY VICTOR LARSON

SIGNED THIS 30 DAY OF OCTOBER, 1973

FRANCIS RANKIN
PROFESSIONAL ENGINEER
MCPHERSON, KANSAS

