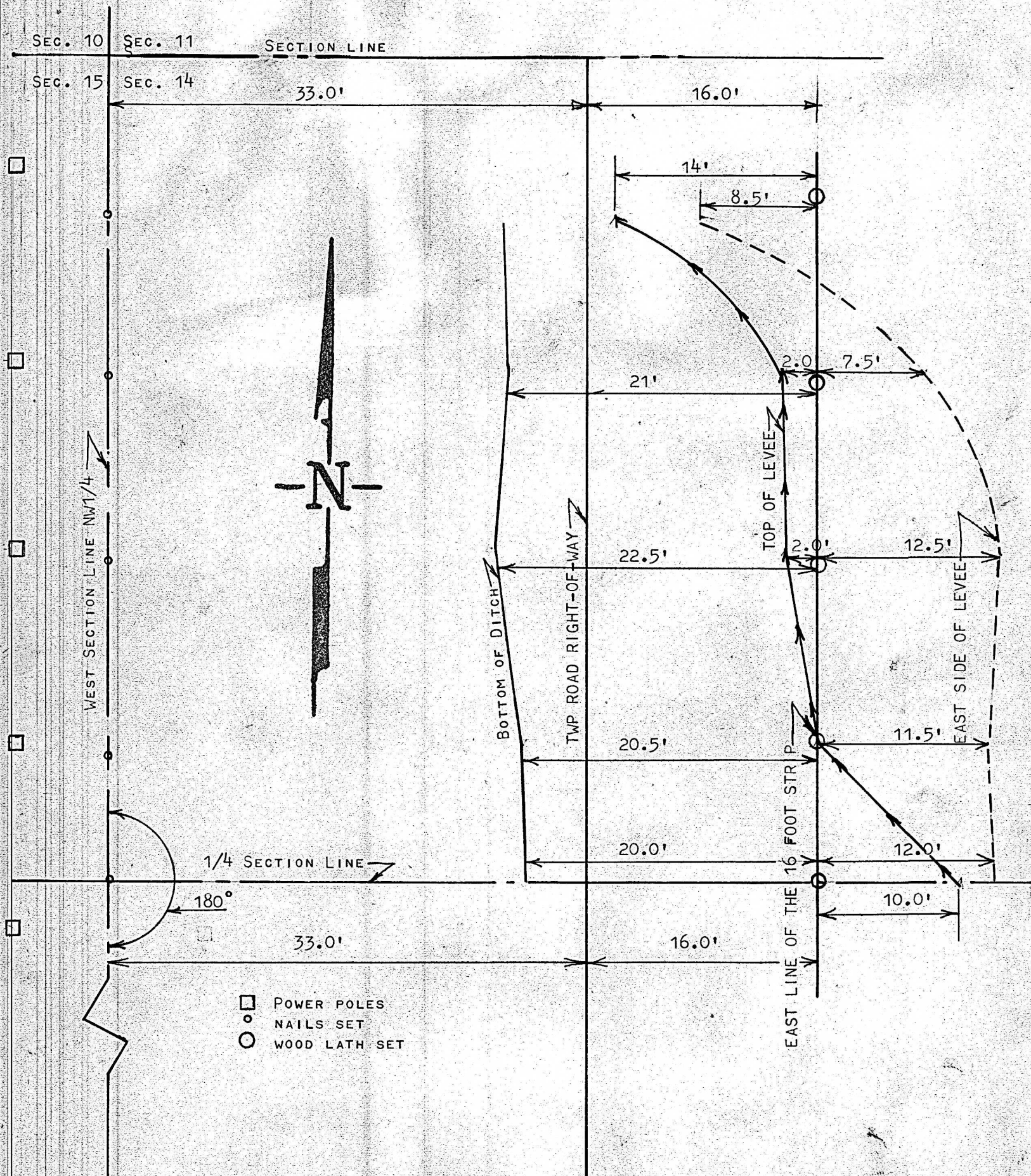


LOACTION DRAINAGE DITCH
NW 1/4, SECTION 14, T21S, R4W
McPHERSON, COUNTY

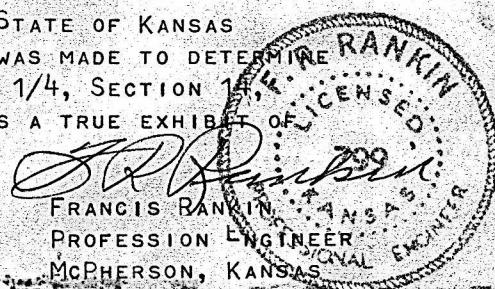


STATE OF KANSAS)
COUNTY OF MCPHERSON) SS

I, FRANCIS RANKIN, PROFESSIONAL ENGINEER OF THE STATE OF KANSAS DO HEREBY CERTIFY THAT UNDER MY SUPERVISION A SURVEY WAS MADE TO DETERMINE A 16 FOOT STRIP OF LAND ALONG THE WEST SIDE OF THE NW 1/4, SECTION 14, T21S, R4W, OF THE 6TH P.M., AND THAT THE ABOVE PLAT IS A TRUE EXHIBIT OF SAID SURVEY AS FAR AS IT IS KNOWN TO ME.

SURVEY CALLED FOR BY KAUFMAN

Signed this 10 DAY OF OCTOBER, 1966
FIELD NOTES IN BOOK 1 RANGE 4



MICROFILM