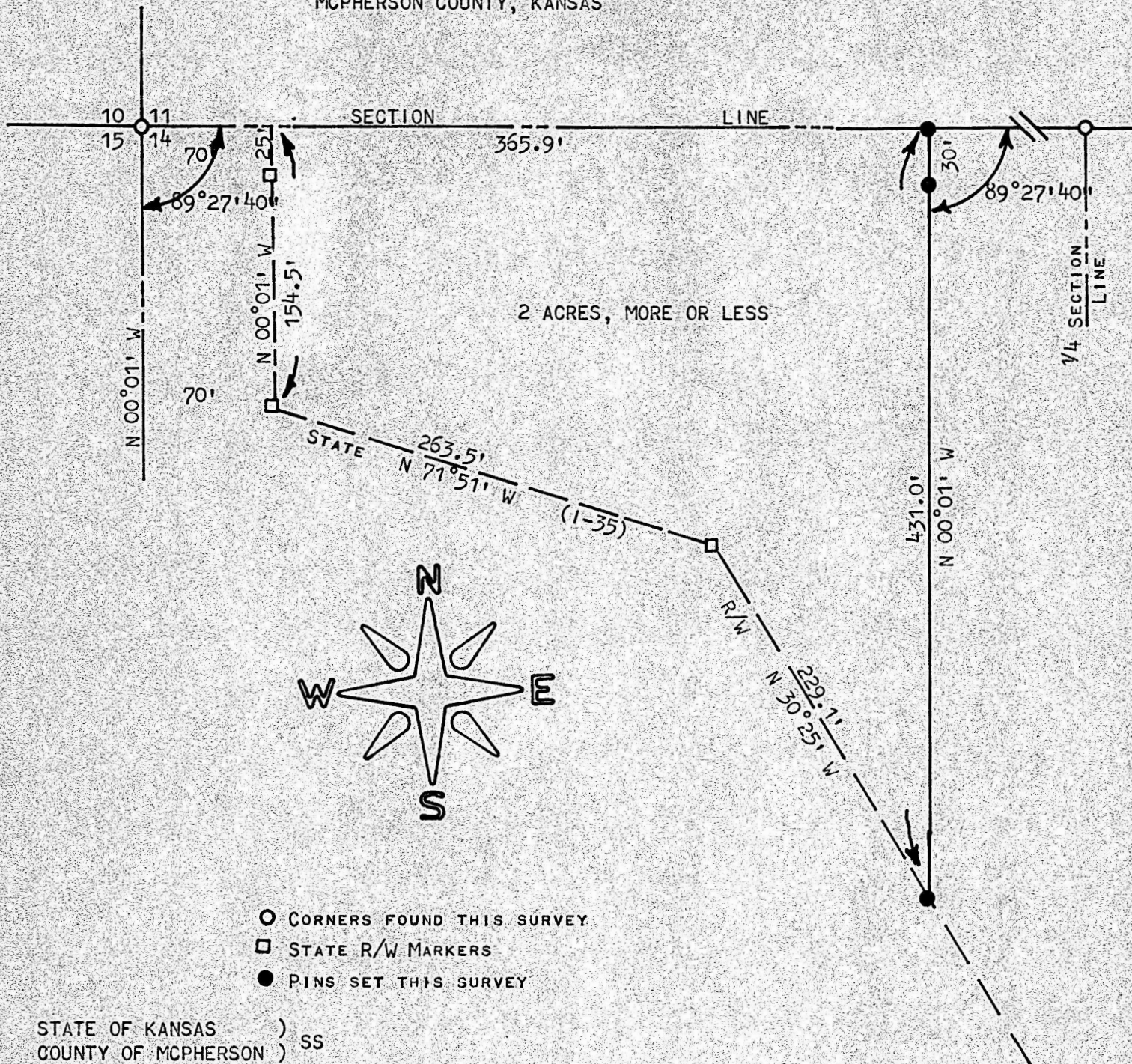


A SURVEY OF A TRACT OF LAND IN THE
NW 1/4, SECTION 14, T21S-R2W,
MCPHERSON COUNTY, KANSAS



I, F. R. RANKIN, COUNTY ENGINEER OF MCPHERSON COUNTY, KANSAS, DO HEREBY CERTIFY THAT UNDER MY SUPERVISION A SURVEY WAS MADE OF A TRACT OF LAND IN THE NW 1/4, SECTION 14, T21S, R2W OF THE 6TH P.M., AND DESCRIBED AS FOLLOWS:

COMMENCING AT THE NW CORNER OF SAID NW 1/4; THENCE EAST 70 FEET TO A PLACE OF BEGINNING; THENCE SOUTH 154.5 FEET BEING THE RIGHT-OF-WAY OF 1-35; THENCE SOUTH EASTERLY ALONG SAID R/W 263.5 FEET; THENCE SOUTH SOUTH EASTERLY ALONG SAID R/W 229.1 FEET; THENCE NORTH 431.0 FEET TO THE NORTH LINE OF SAID NW 1/4 AND BEING PARALLEL WITH THE WEST LINE OF SAID NW 1/4; THENCE WEST 365.9 FEET TO THE PLACE OF BEGINNING. THE LAND HEREIN DESCRIBED CONTAINS 2 ACRES, MORE OR LESS, AND THE ABOVE PLAT IS A TRUE EXHIBIT OF SAID SURVEY AS FAR AS IT IS KNOWN TO ME.

SURVEY CALLED FOR BY HELEN BENDER, MCPHERSON COUNTY ABST. OFFICE, FOR MRS. VERNON L. VOGT.

SIGNED THIS 31 DAY OF JULY, 1972.

Francis R. Rankin
FRANCIS R. RANKIN
COUNTY ENGINEER
MCPHERSON COUNTY, KANSAS

FRANCIS R. RANKIN
LICENSED
KANSAS
PROFESSIONAL ENGINEER

MICROFILM