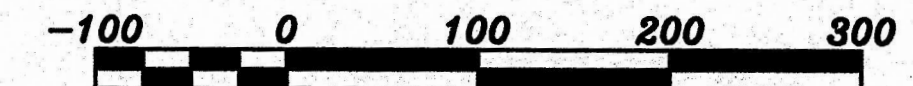
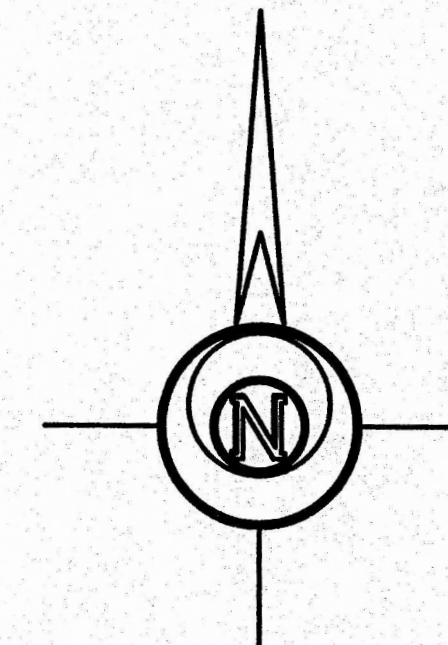
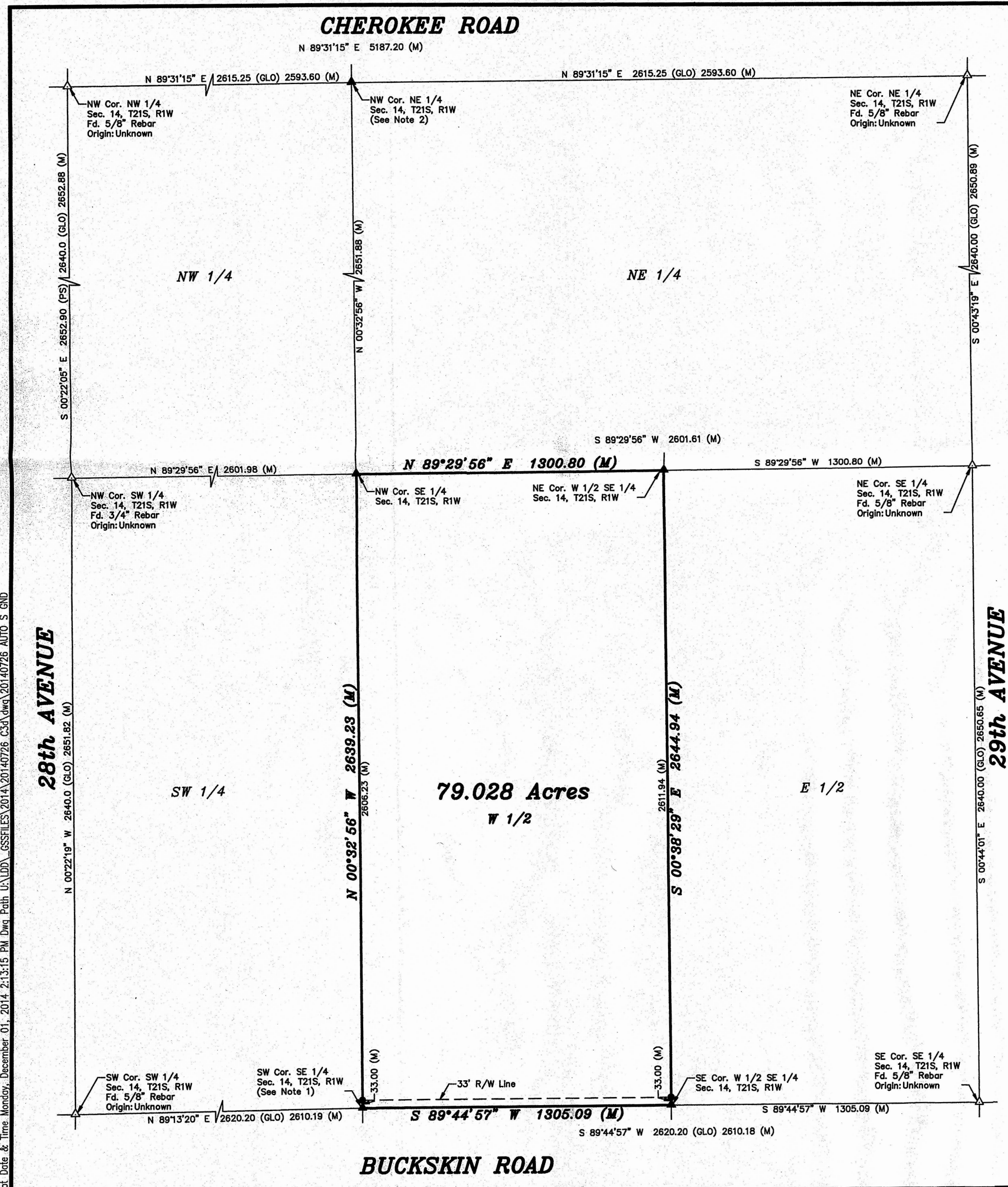


Saved: 12/1/2014 12:01:29 PM by KLOUTZEN
Plot Date & Time: Monday, December 01, 2014 2:13:15 PM Dwg Path: U:\DD\GSSFILES\2014\20140726 C3d\dwg\20140726 AUTO S.GND



BASIS OF BEARING = NAD 83 KANSAS ZONE 1502

LEGEND

- △ - Sectional Monument Found
- ▲ - Section Monument Set (5/8" x 24" Iron Rebar w/G.S.S. Cap)
- - 5/8" x 24" Iron Rebar Set w/G.S.S. Cap
- (M) - Measured
- (GLO) - General Land Office
- (PS) - Previous Survey by Bowers LS 570 dated 11/17/1976

DESCRIPTION:

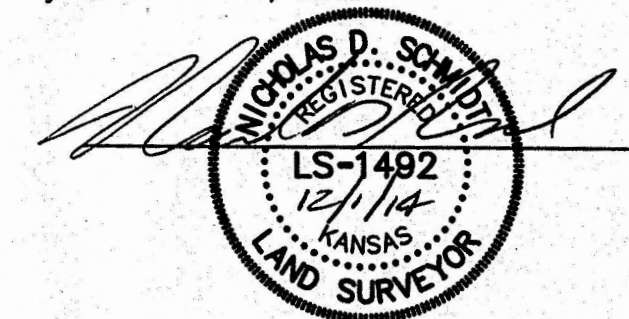
The West Half of the Southeast Quarter of Section 14, Township 21 South, Range 1 West of the 6th Principal Meridian, McPherson County, Kansas

SURVEYOR'S NOTES:

1. Searched for stone and reference ties as referenced on section corner report on file at the McPherson County Public Works Office. Stone and reference ties appear to have been destroyed. Reference ties appear to have placed the stone near the center of the road. Reset using single proportion measurement in accordance with the GLO survey between SE and SW corners for East/West position and centerline of road for North/South positions.
2. No record of GLO stone or reference ties on file. Searched for corner in line with the hedge row North and at single proportion calculated position, but found nothing. The single proportion position falls +/- 48 feet West of the hedge row North. Hedge row appears to have been set at +/- 2640' from NW section corner; therefore, it was not considered credible physical evidence since GLO notes reveal a surveyed distance across the North line of 79.25 chains. Set corner by single proportionate measurement in accordance with the GLO survey.

SURVEYOR'S CERTIFICATE:

I hereby certify this plat to be a true, correct and complete representation of the property described hereon, as surveyed under my supervision, this 1st day of December, 2014.



Prepared For: GARY HUXMAN		Description: THE W 1/2 OF THE SE 1/4 SECTION 14, T21S, R1W MCPHERSON COUNTY, KANSAS	
Prepared By: GSS		Garber Surveying Service, P.A.	
HUTCHINSON (Main Office) 2908 North Plum St. 67502 Ph. 620-665-7032 Fax 620-663-7401		McPHERSON (Branch Office) 115 East Marlin 67460 Ph. 620-241-4441 Fax 620-241-4458	
NEWTON (Branch Office) 511 North Poplar St. 67114 Ph. 316-283-5053 Fax 316-283-5073			
Drawn By: KLL	Scale: 1"=100'	Date of Field Work: November 6, 2014	Job No:
Checked By: NDS	Date: 12/01/2014	Sheet 1 of 1 Sheet(s)	G2014-726