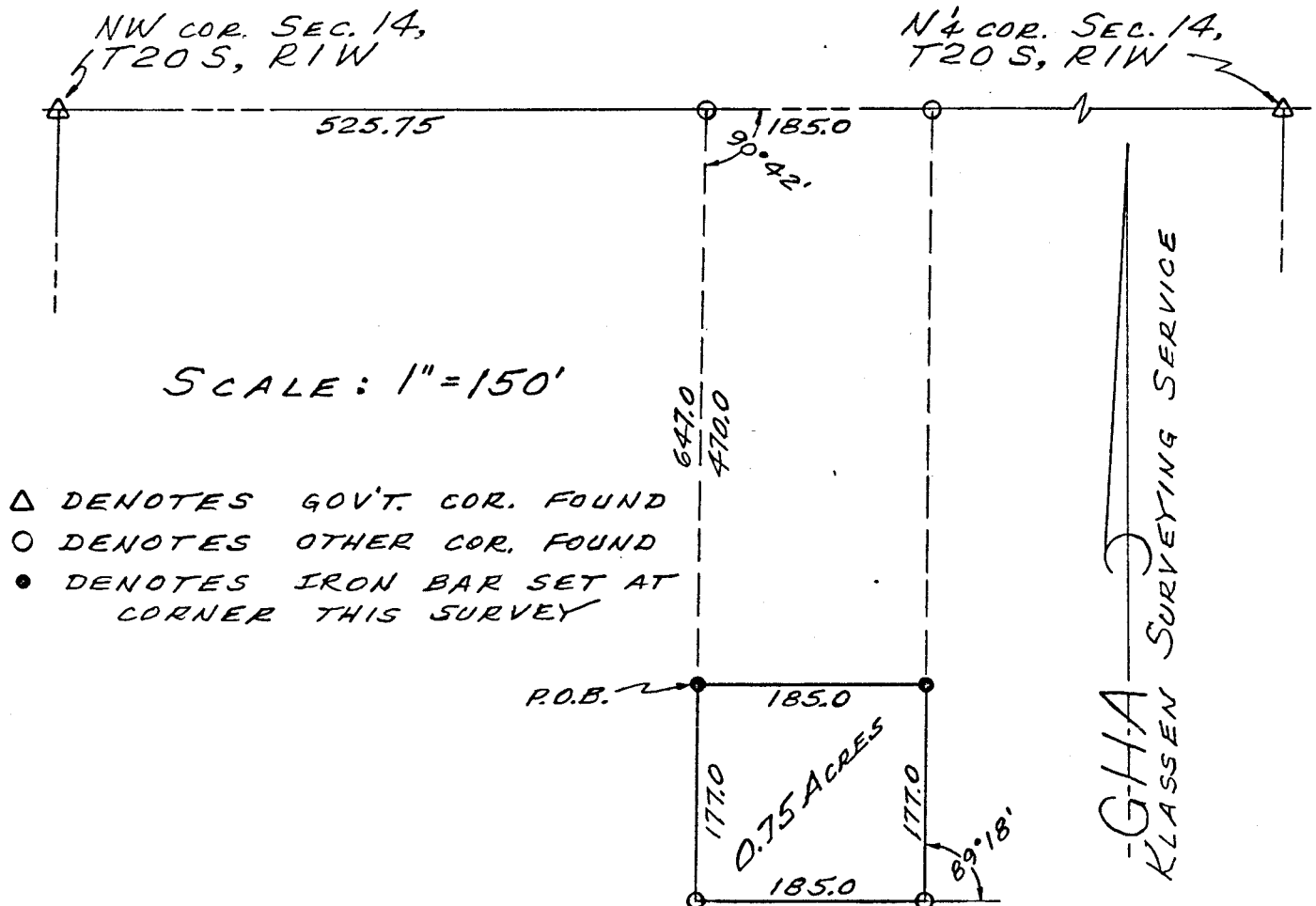


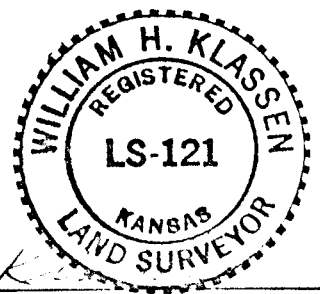
GEO HOLCOMB  
ASSOCIATES

PHONE (316) 663-6601 - BOX 23  
423 NORTH MONROE HUTCHINSON, KANSAS  
67501

Commencing at the NW corner of the NW  $\frac{1}{4}$  of Section 14, T20S, R1W of the 6th P.M., thence east along the north line of said NW  $\frac{1}{4}$  525.75 feet; thence with a deflection angle Rt.  $90^{\circ}42'$ , south 470.0 feet for a place of beginning; thence continuing south with no deflection 177.0 feet; thence east parallel with the north line of said NW  $\frac{1}{4}$  185.0 feet; thence with a deflection angle Lt.  $89^{\circ}18'$ , north 177.0 feet to a point that is 185.0 feet east of the place of beginning; thence west 185.0 feet to the place of beginning containing 0.75 acres in McPherson County, Kansas.



I HEREBY CERTIFY THIS PLAT TO BE A TRUE  
AND CORRECT REPRESENTATION OF THE ABOVE  
DESCRIBED PROPERTY, AS SURVEYED BY ME,  
THIS 10<sup>TH</sup> DAY OF NOVEMBER, 1973.



William H. Klassen  
KANSAS LAND SURVEYOR - L.S. #121