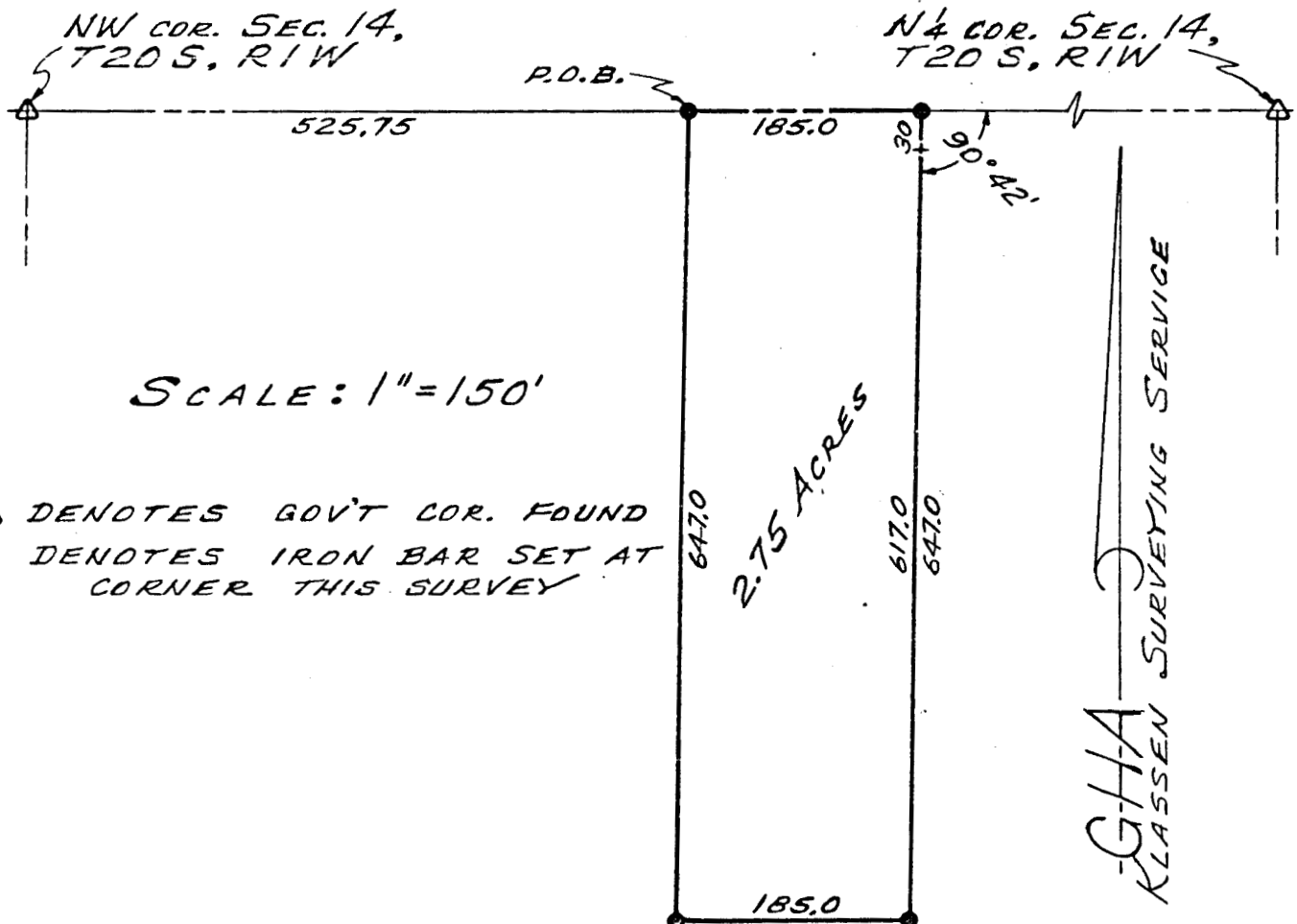


GEO HOLCOMB  
ASSOCIATES

PHONE (316) 663-6601 - BOX 23  
423 NORTH MONROE HUTCHINSON, KANSAS  
67501

Commencing at the NW corner of the NW $\frac{1}{4}$  of Section 14, T20S, R1W of the 6th P.M., thence east along the north line of said NW $\frac{1}{4}$  525.75 feet for a place of beginning; thence continuing east on the north line of said NW $\frac{1}{4}$  185.0 feet; thence with a deflection angle Rt. 90°42', south 647.0 feet; thence west parallel with the north line of said NW $\frac{1}{4}$  185.0 feet; thence north 647.0 feet to the place of beginning, containing 2.75 acres in McPherson County, Kansas.



I HEREBY CERTIFY THIS PLAT TO BE A TRUE  
AND CORRECT REPRESENTATION OF THE ABOVE  
DESCRIBED PROPERTY, AS SURVEYED BY ME,  
THIS 10<sup>TH</sup> DAY OF NOVEMBER, 1973.

MICROFILM

William H. Klassen  
KANSAS LAND SURVEYOR - L.S. #121

