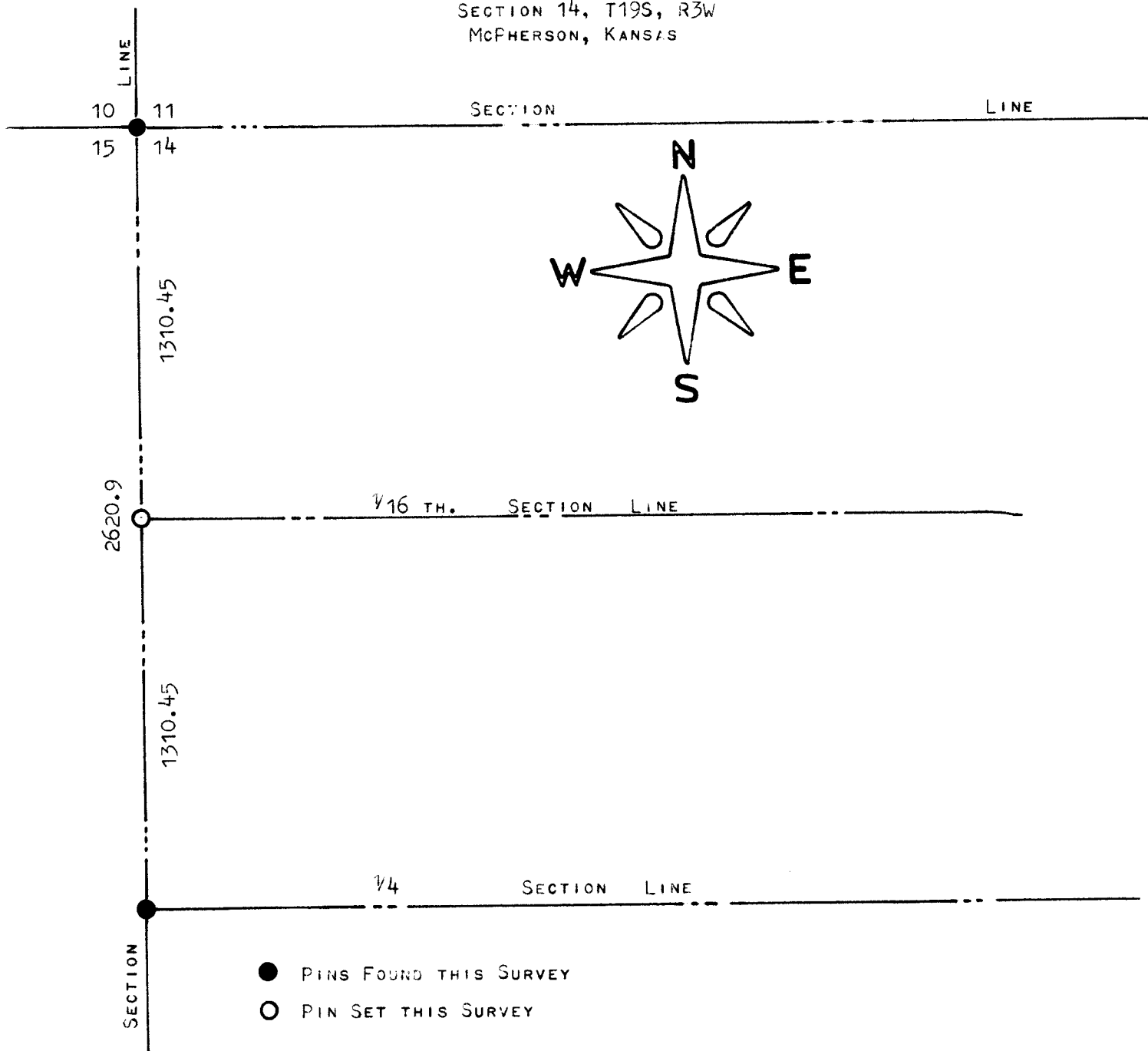


SURVEY OF THE NW 1/4
SECTION 14, T19S, R3W
McPHERSON, KANSAS



STATE OF KANSAS)
COUNTY OF McPHERSON) S.S.

I, F. R. RANKIN, COUNTY ENGINEER OF McPHERSON, KANSAS, DO HEREBY CERTIFY THAT UNDER MY SUPERVISION A SURVEY WAS MADE IN THE NW 1/4 SECTION 14, T19S, R3W, OF THE 6 P. M. TO DETERMINE THE WEST 1/16 TH. CORNER OF THE NW 1/4 AND THE ABOVE PLAT IS A TRUE EXHIBIT OF SAID SURVEY AS FAR AS IT IS KNOWN TO ME.

SURVEY CALLED FOR BY HOMER KREHBIEL SR.

SITNED THIS 29 DAY OF APRIL 1970

F. R. Rankin
F. R. RANKIN
COUNTY ENGINEER
McPHERSON, KANSAS

A circular professional engineer seal for F. R. Rankin, Kansas. The seal contains the text 'F. R. RANKIN', 'LICENSED', '799', 'KANSAS', and 'PROFESSIONAL ENGINEER'.