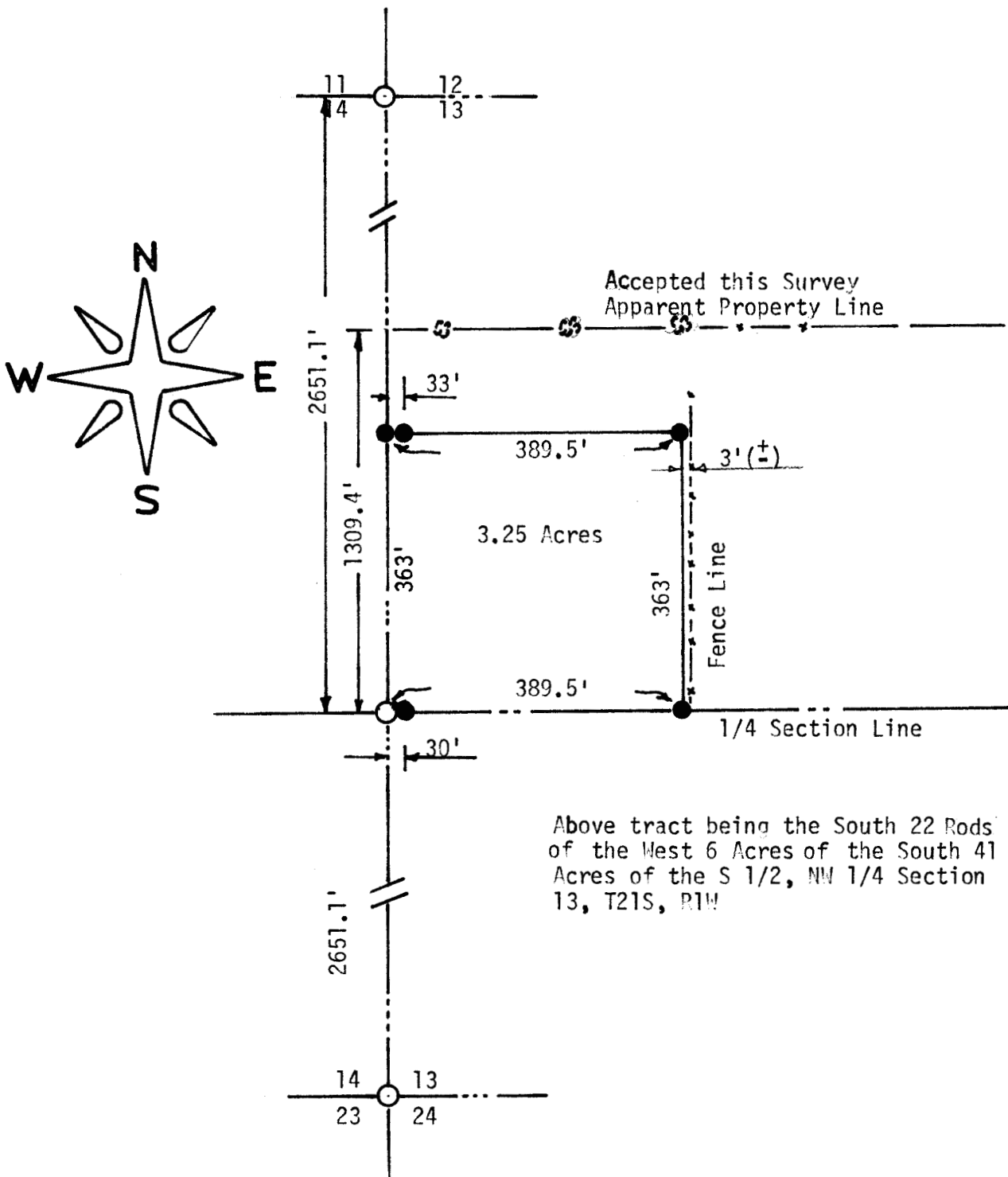


TRACT OF LAND IN THE
NW 1/4 SECTION 13, T21S, R1W
MC PHERSON, KANSAS



State of Kansas)
County of McPherson) SS

I, F. R. Rankin, County Engineer of McPherson County, Kansas, do hereby certify that under my supervision a survey was made in the NW 1/4 Section 13, T21S, R1W of the 6th P.M. and described as follows: Beginning at the SW corner of the NW 1/4 Section 13; thence East 389.5 feet; thence North 363 feet; thence West 389.5 feet; thence South 363 feet to the place of beginning. The land herein described contains 3.25 acres more or less and the above plat is a true exhibit of said survey as far as it is known to me.

Survey called for by A. J. Schroeder

Signed this 16th day November, 1971

F. R. Rankin
F. R. Rankin, P. E.
County Engineer
McPherson, Kansas