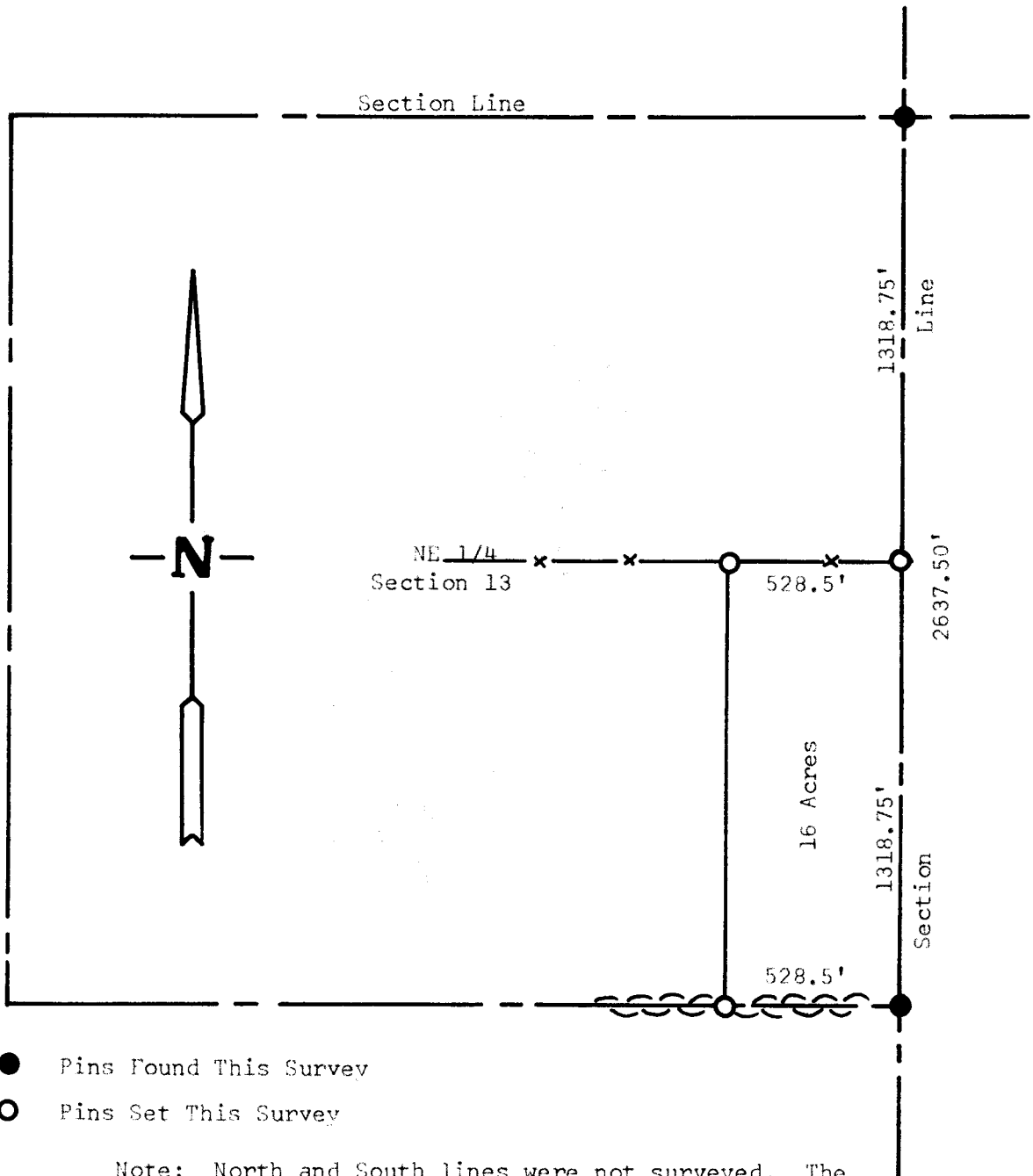


A SURVEY IN THE NE 1/4  
OF SECTION 13, T20S, R3W  
MC Pherson, Kansas



Note: North and South lines were not surveyed. The fence line and hedge line were accepted as the North & South property lines as wished by the land owner.

State of Kansas )  
County of McPherson) SS

I, F. R. Rankin, County Engineer of McPherson County, Kansas, Do hereby certify that under my supervision a survey was made of the East 16 acres of the S 1/2, NE 1/4 of Section 13, T20S, R3W of the 6th P.M. and that the above plat is a true exhibit of said survey as far as it is known to me.

Survey called for by J. D. Stucky

Signed this 1 day of April, 1969

*F. R. Rankin*  
F. R. Rankin  
County Engineer  
McPherson, Kansas

