

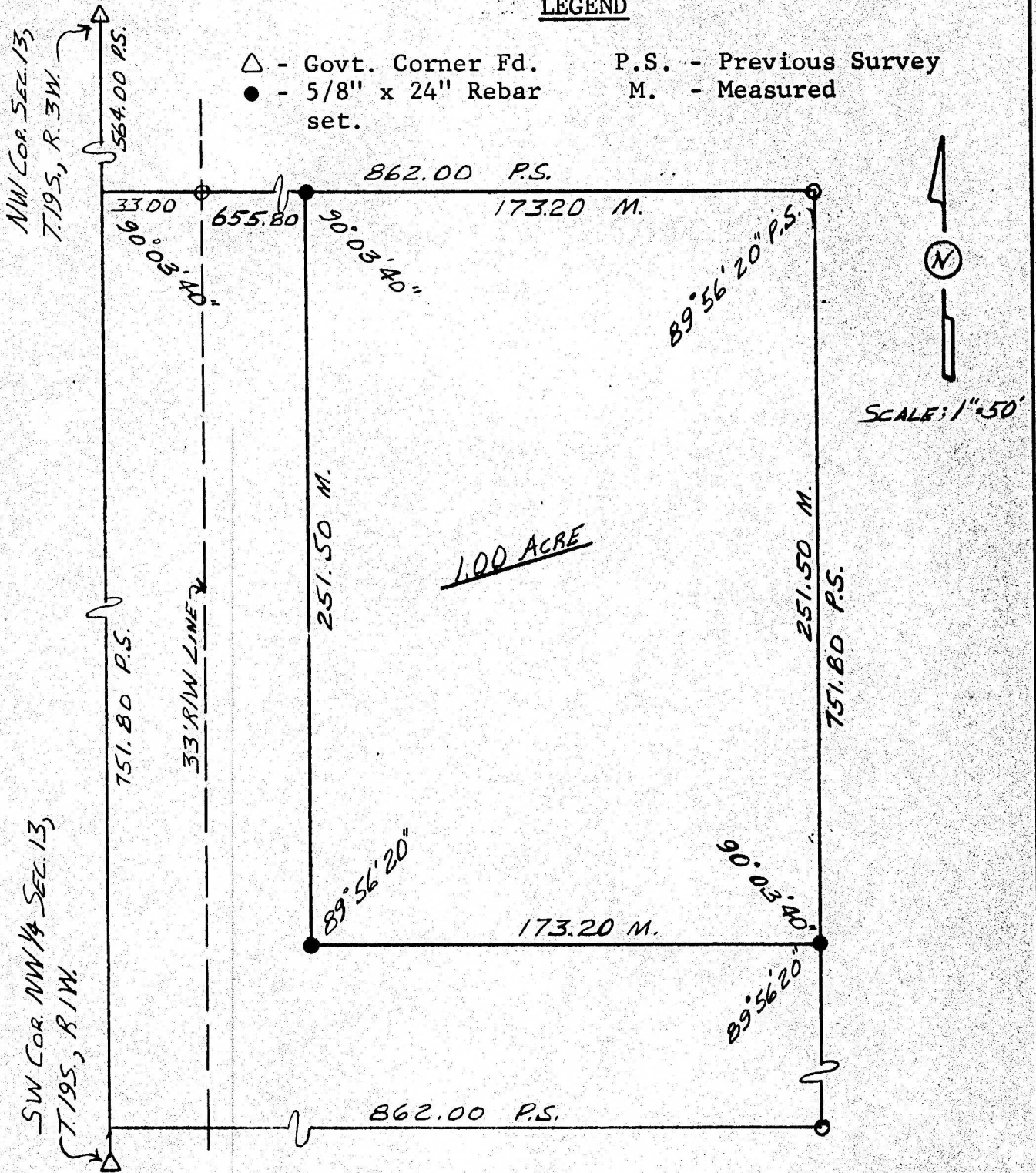
Survey For: Mike Byrns
 By: Garber Surveying Service, P.A.
 217 East First Avenue, Suite 9
 Hutchinson, Kansas 67501
 Phone: 316-665-7032

DESCRIPTION: A survey of a tract in the NW $\frac{1}{4}$ of Sec. 13, T.19S., R.3.W. of the 6th Principal Meridian, McPherson Co., Kansas, as described on the attached sheet.

LEGEND

△ - Govt. Corner Fd.
 ● - 5/8" x 24" Rebar set.

P.S. - Previous Survey
 M. - Measured



I hereby certify this plat to be a true, correct, and complete representation of the property described above and on the attached sheet, as surveyed under my supervision, this 14th day of November, 1983.

Daniel E. Garber
 Daniel E. Garber, R.L.S.

