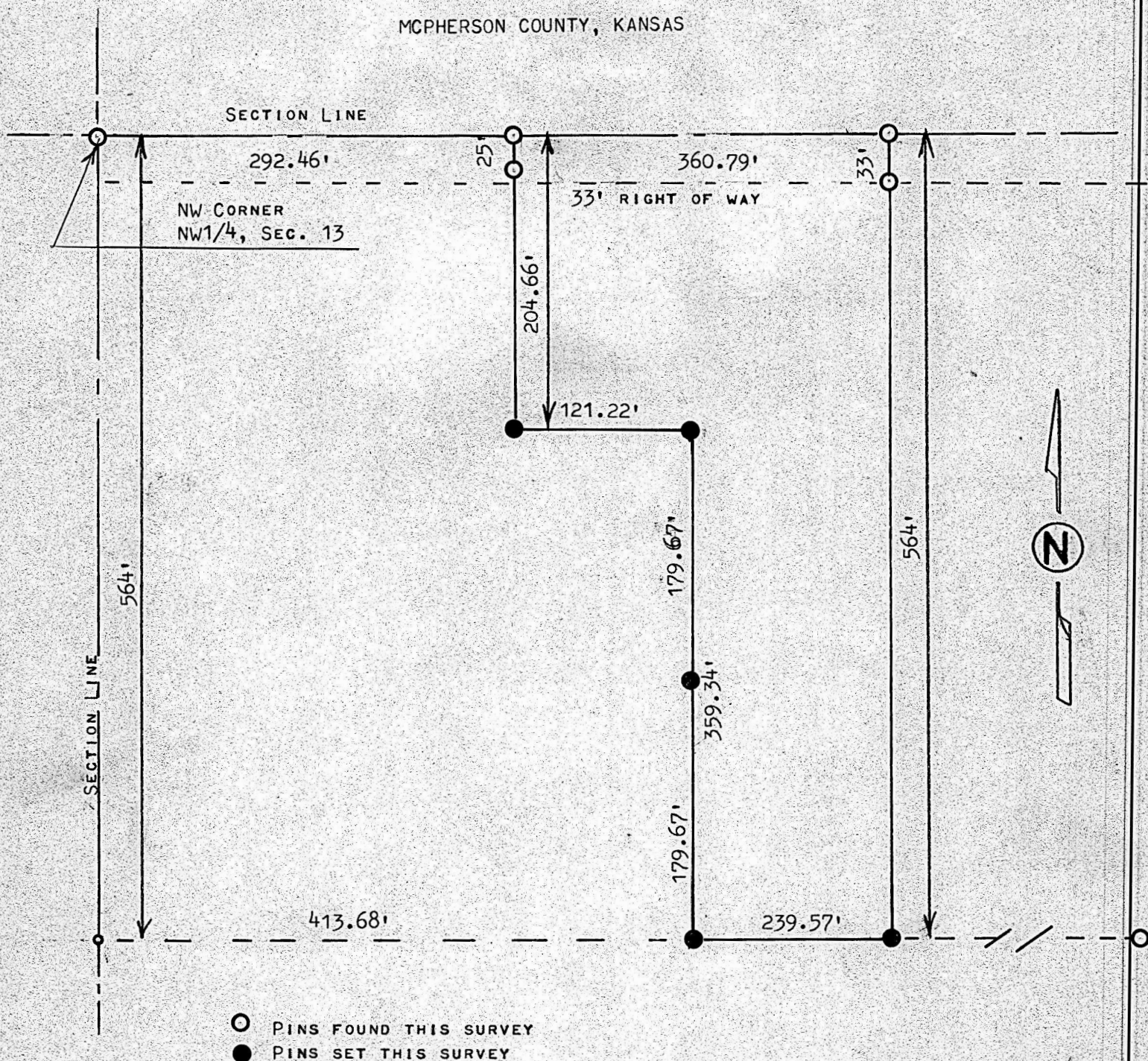


A SURVEY OF A TRACT OF LAND IN THE  
NW1/4, SECTION 13, T19S, R3W  
MCPHERSON COUNTY, KANSAS



STATE OF KANSAS )  
COUNTY OF MCPHERSON ) SS

I, MELVIN FERGUSON, PROFESSIONAL ENGINEER OF THE STATE OF KANSAS DO HEREBY CERTIFY THAT UNDER MY SUPERVISION A SURVEY WAS MADE OF A TRACT OF LAND IN THE NW1/4, SECTION 13, T19S, R3W OF THE 6TH P.M. AND DESCRIBED AS FOLLOWS; BEGINNING 292.46 FEET EAST OF THE NW CORNER OF SAID NW1/4, SECTION 13, T19S, R3W; THENCE SOUTH PARALLEL WITH SECTION LINE 204.66 FEET; THENCE EAST PARALLEL WITH SECTION LINE 121.22 FEET; THENCE SOUTH PARALLEL WITH SECTION LINE 359.34 FEET; THENCE EAST PARALLEL WITH SECTION LINE 239.57 FEET; THENCE NORTH PARALLEL WITH SECTION LINE 564 FEET AND TO SECTION LINE; THENCE WEST ON SECTION LINE 360.79 FEET AND TO THE PLACE OF BEGINNING SAID TRACT OF LAND CONTAINS 3.67 ACRES MORE OR LESS, AND THAT THE ABOVE PLAT IS A TRUE EXHIBIT OF SAID SURVEY AS FAR AS IT IS KNOWN TO ME.

SURVEY CALLED FOR BY JOHN BUSTER

SIGNED THIS 17<sup>th</sup> DAY OF APRIL, 1978

MELVIN FERGUSON  
PROFESSIONAL ENGINEER  
MCPHERSON, KANSAS

