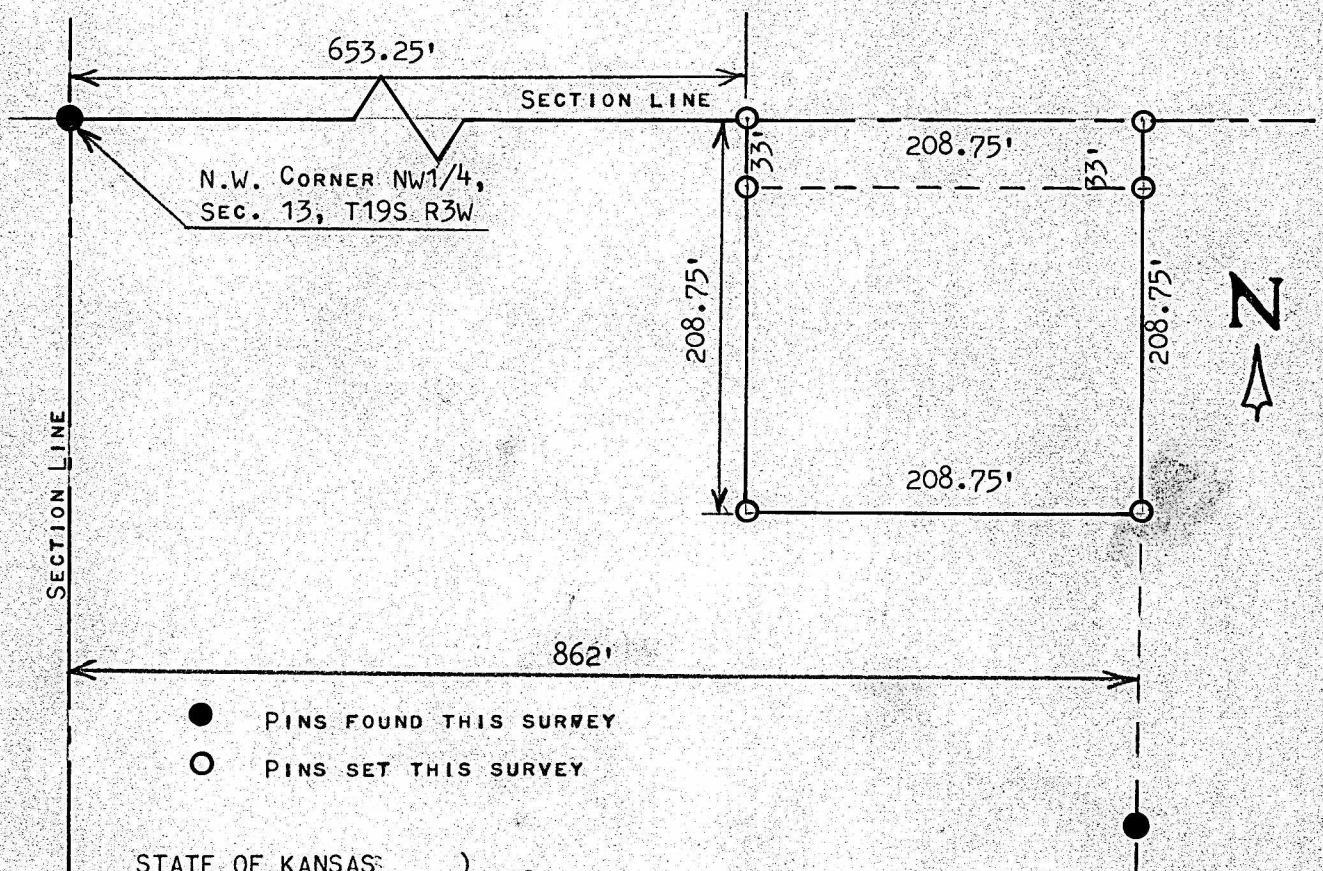


A SURVEY OF A TRACT OF LAND IN THE
 NW1/4, SECTION 13, T19S, R3W
 MCPHERSON COUNTY, KANSAS



STATE OF KANSAS:)
 COUNTY OF MCPHERSON) SS

I, MELVIN FERGUSON, PROFESSIONAL ENGINEER OF THE STATE OF KANSAS,
 DO HEREBY CERTIFY THAT UNDER MY SUPERVISION A SURVEY WAS MADE OF
 A TRACT OF LAND IN THE NW1/4, SECTION 13, T19S, R3W OF THE 6TH.
 P.M. AND DESCRIBED AS FOLLOWS;

BEGINNING AT A POINT 653.25 FEET EAST OF THE NW CORNER OF SAID
 NW1/4, SECTION 13, T19S, R3W; THENCE SOUTH PARALLEL WITH SECTION
 LINE 208.75 FEET; THENCE EAST PARALLEL WITH SECTION LINE 208.75 FEET;
 THENCE NORTH TO SECTION LINE 208.75 FEET; THENCE WEST ON SECTION LINE
 208.75 FEET AND TO PLACE OF BEGINNING, SAID TRACT OF LAND CONTAINS
 1.0 ACRES MORE OR LESS, AND THAT THE ABOVE PLAT IS A TRUE EXHIBIT
 OF SAID SURVEY AS FAR AS IT IS KNOWN TO ME.
 SURVEY CALLED FOR BY EARL BUSTER

SIGNED THIS 15th DAY OF FEBRUARY, 1977

Melvin Ferguson
 MELVIN FERGUSON
 PROFESSIONAL ENGINEER
 MCPHERSON, KANSAS