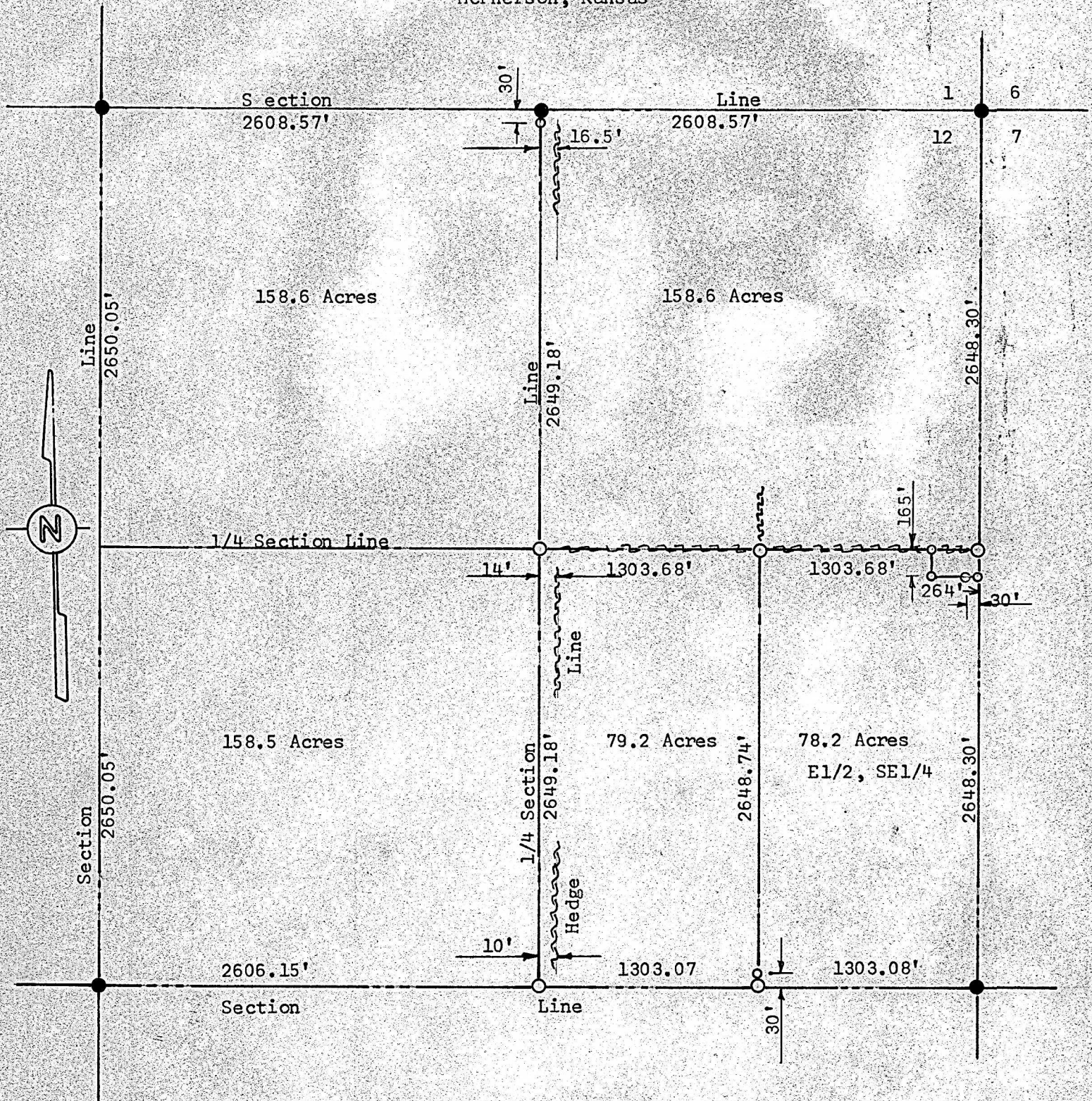


Survey of Section 12 T21S-R5W  
McPherson, Kansas



- Corners Set Previous Survey
- Pins Set This Survey

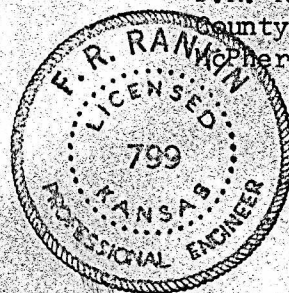
State of Kansas )  
County of McPherson ) S.S.

I, F.R. Rankin, County Engineer of McPherson, County, do hereby certify that under my supervision a survey was made of Section 12, T21S-R5W of the 6th. P.M. to determine the East 1/2, South East 1/4 of said Section 12 and the above plat is a true and correct copy of said survey as far as it is known to me.

Survey called for by G.F.Toews

Signed this 7 day May, 1971

*F.R. Rankin*  
F.R. Rankin  
County Engineer  
McPherson, Kansas



MICROFILM