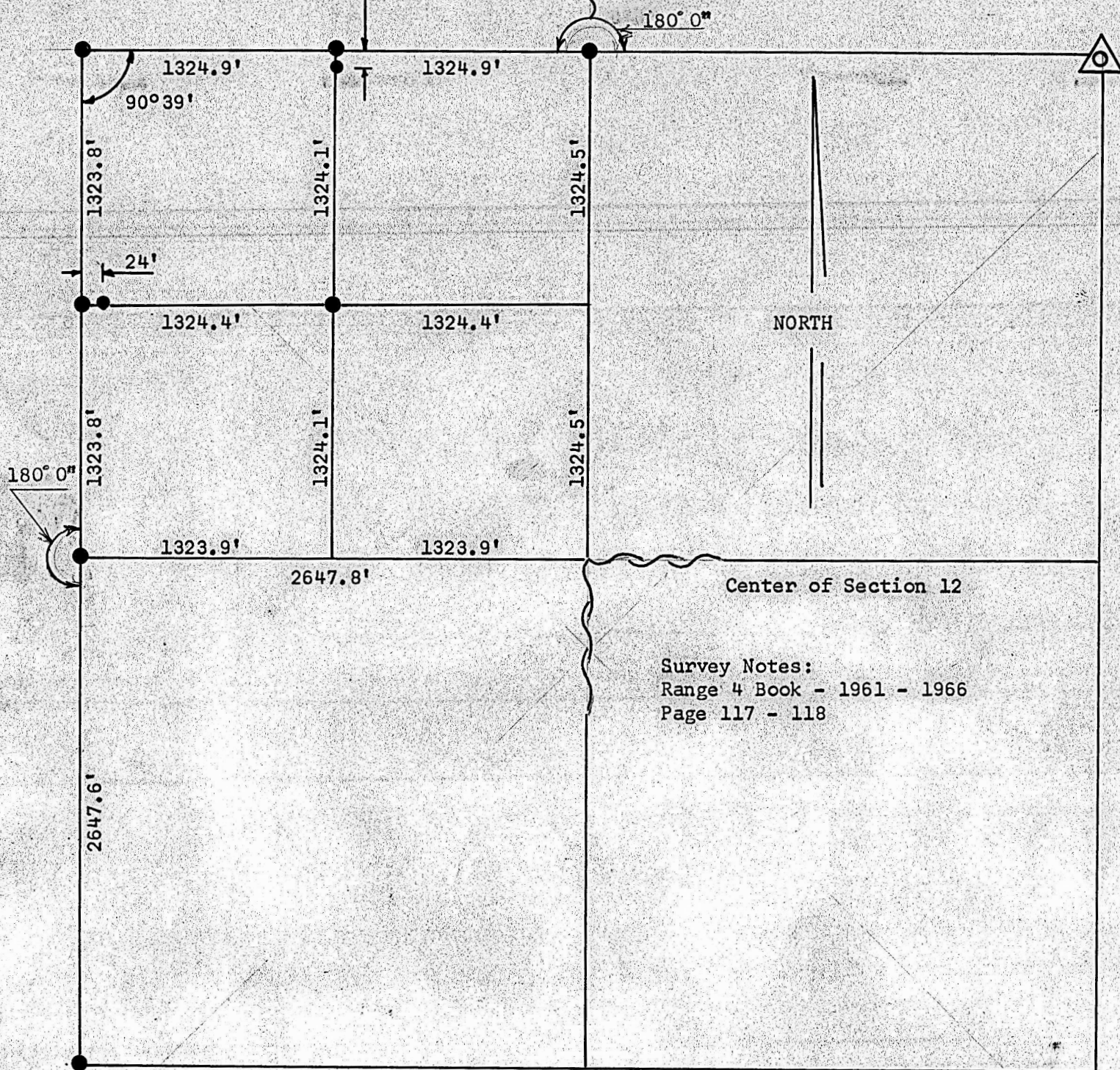


PRIVATE SURVEY
SECTION 12, T20S, R4W
MCPHERSON COUNTY, KANSAS



Survey Notes:
Range 4 Book - 1961 - 1966
Page 117 - 118

● Pins Set this Survey

△ Stone & Pin Found this Survey

State of Kansas)
County of McPherson) SS

I, F. R. Rankin, County Engineer of McPherson, Kansas, do hereby certify that under my supervision a survey was made to determine the NW 1/4, NW 1/4 Section 12, T20S, R4W of the 6th P.M. and the above plat is a true exhibit of said survey as far as it is known to me.

Survey called for by Archie MacDonald
Signed this 4 day of March 1966

F. R. Rankin
F. R. Rankin
County Engineer



MICROFILM