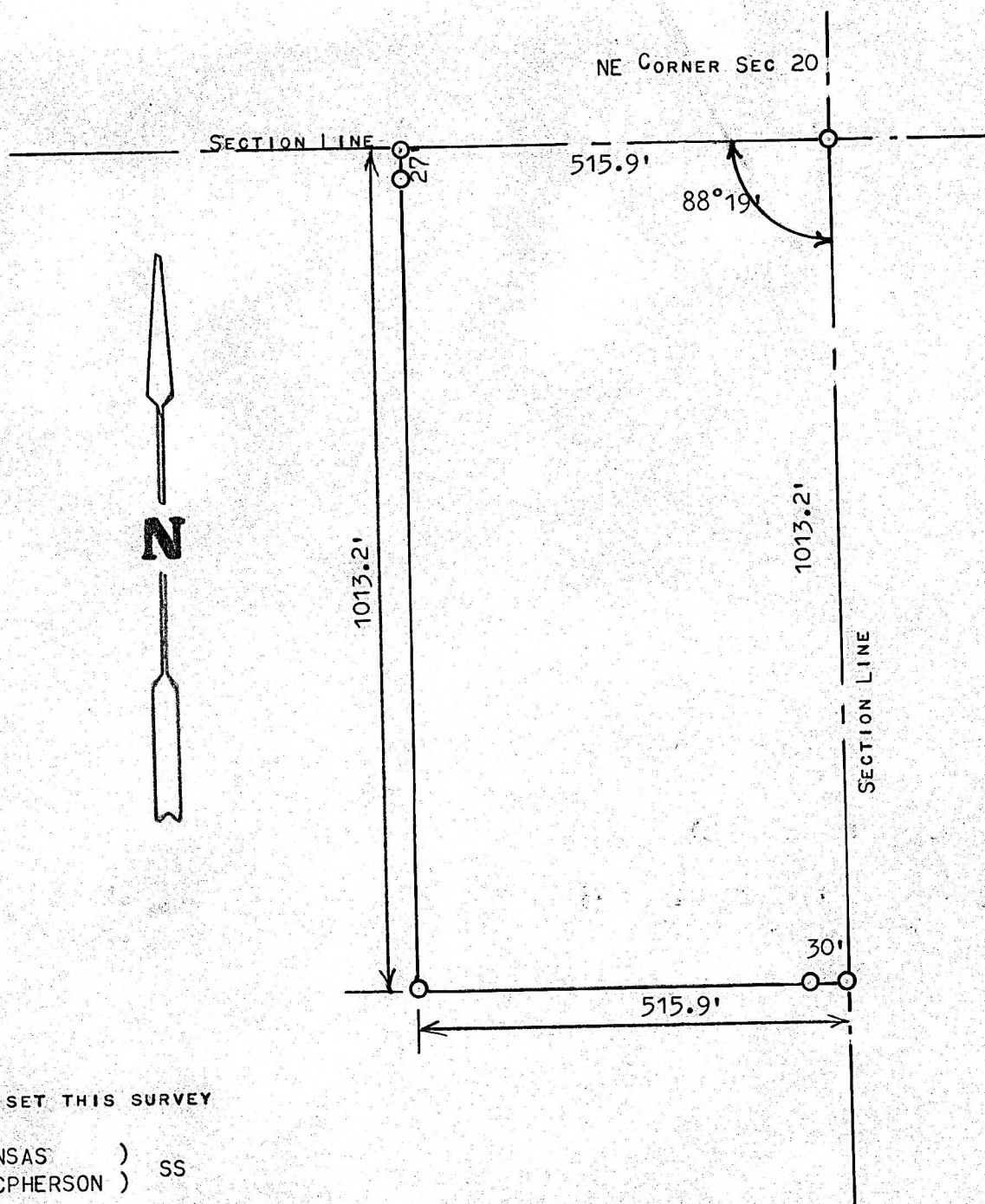


A SURVEY OF A TRACT OF LAND IN THE  
NE1/4, SECTION 12, T20S R3W  
MCPHERSON COUNTY, KANSAS



○ PINS SET THIS SURVEY

STATE OF KANSAS )  
COUNTY OF MCPHERSON ) SS

I, MELVIN FERGUSON, PROFESSIONAL ENGINEER OF THE STATE OF KANSAS DO  
HEREBY CERTIFY THAT UNDER MY SUPERVISION A SURVEY WAS MADE IN THE  
NE1/4, SECTION 12, T20S, R3W OF THE 6TH P.M. AND DESCRIBED AS FOLLOWS:

BEGINNING AT THE NE CORNER OF THE NE1/4, SECTION 12, T20S, R3W: THENCE  
SOUTH ON SECTION LINE 1013.2 FEET; THENCE WEST PARALLEL WITH SECTION  
LINE 515.9 FEET; THENCE NORTH PARALLEL WITH SECTION LINE 1013.2 FEET;  
THENCE EAST ON SECTION LINE 515.9 FEET TO PLACE OF BEGINNING, SAID  
TRACT OF LAND CONTAINS 12.0 ACRES MORE OR LESS, AND THAT THE ABOVE  
PLAT IS A TRUE EXHIBIT OF SAID SURVEY AS FAR AS IT IS KNOWN TO ME.

SURVEY CALLED FOR BY DELBERT SCHRAG

SIGNED THIS 9<sup>th</sup> DAY OF APRIL, 1975

Melvin Ferguson  
MELVIN FERGUSON  
PROFESSIONAL ENGINEER  
MCPHERSON, KANSAS 6772

