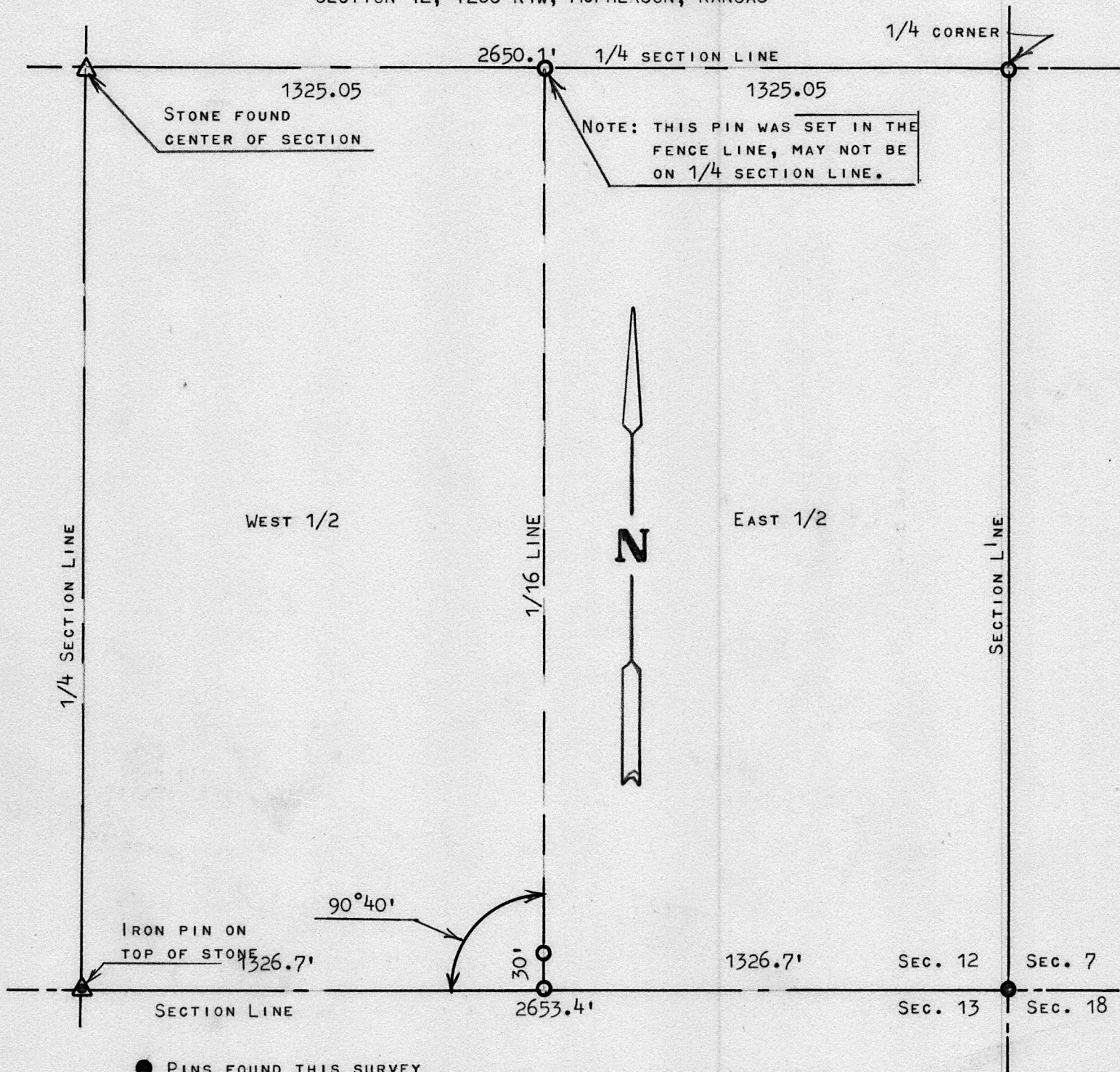


A SURVEY OF THE E1/2 AND W1/2, SE1/4  
SECTION 12, T20S R1W, McPHERSON, KANSAS



● PINS FOUND THIS SURVEY

○ PINS SET THIS SURVEY

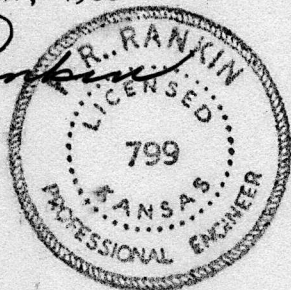
STATE OF KANSAS )  
COUNTY OF MCPHERSON) SS

I, FRANCIS RANKIN, PROFESSIONAL ENGINEER OF THE STATE OF KANSAS DO HEREBY CERTIFY THAT UNDER MY SUPERVISION A SURVEY WAS MADE TO DETERMINE THE EAST HALF AND THE WEST HALF OF THE SE1/4 SECTION 12 T20S, R1W OF THE 6TH. P.M., AND THAT THE ACCOMPANYING PLAT IS A TRUE EXHIBIT OF SAID SURVEY AS FAR AS IT IS KNOWN TO ME.

SURVEY CALLED FOR BY AARON KOEHN

SIGNED THIS 9 DAY OF MAY, 1968

*Francis Rankin*  
FRANCIS RANKIN  
PROFESSIONAL ENGINEER  
MCPHERSON, KANSAS



MICROFILM