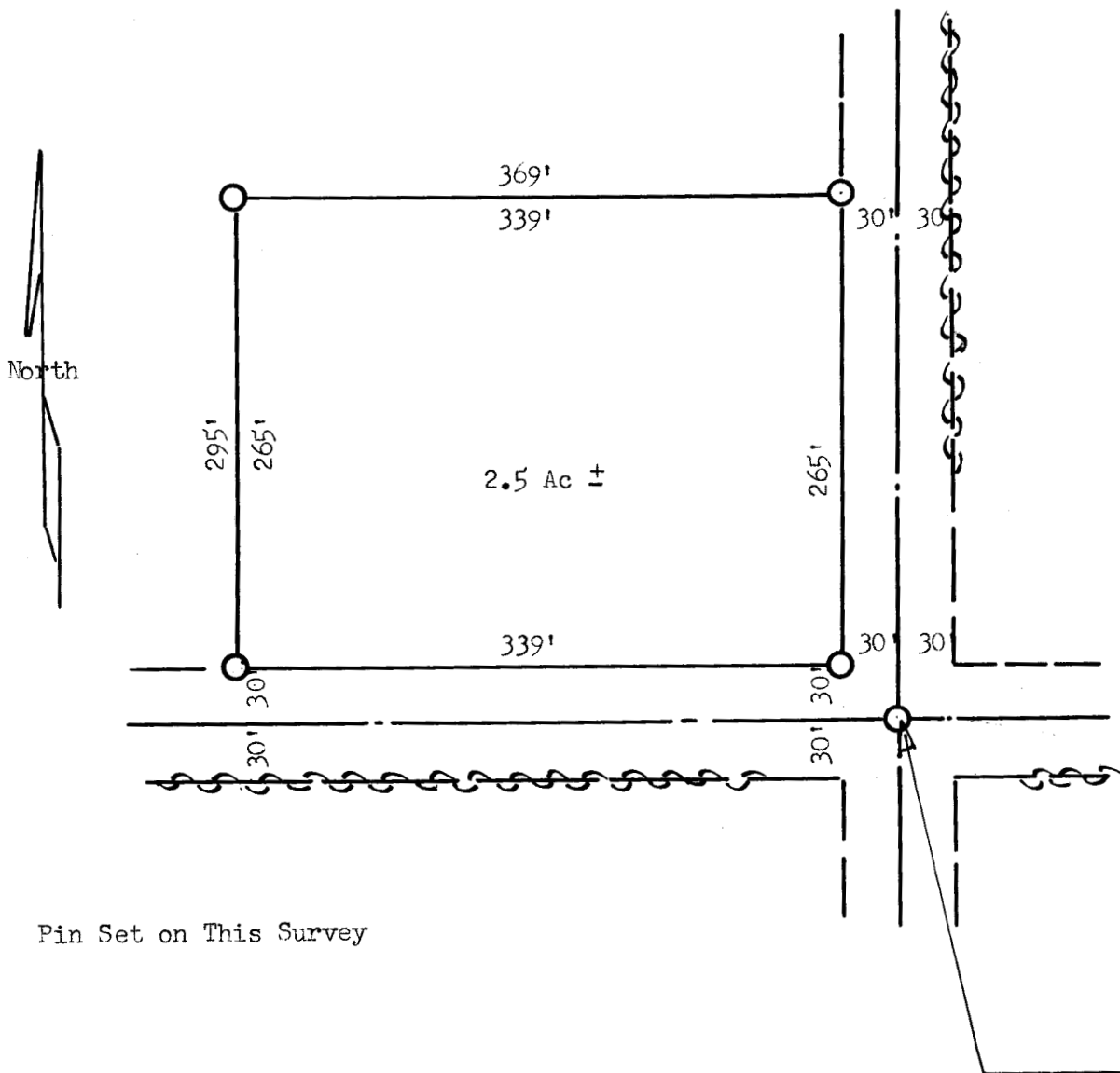


SURVEY OF A TRACT OF LAND
IN THE SE 1/4 SECTION
12-T19S-R2W



Pin Set on This Survey

State of Kansas) SS
County of McPherson)

I, Francis D. Wagner, County Engineer of McPherson County, Kansas, do hereby certify that I did cause to be done on the 18th day of August, 1955, a survey to establish the corners of a tract of land in the SE 1/4 SE 1/4, SE 1/4 of Section 12, T19S, R2W of the 6th P.M.

Beginning at the Southeast corner SE 1/4, SE 1/4, SE 1/4 Section 12 - T19S - R2W, thence West along the Section line 369', thence North 295', thence East 369' to the Section line, thence South along said Section line 295' to place of beginning. Tract of land contains 2.5 Ac. more or less. And that the accompanying plat is a true exhibit of said survey.

August 18, 1955

Francis D. Wagner

Francis D. Wagner
County Engineer
McPherson, County