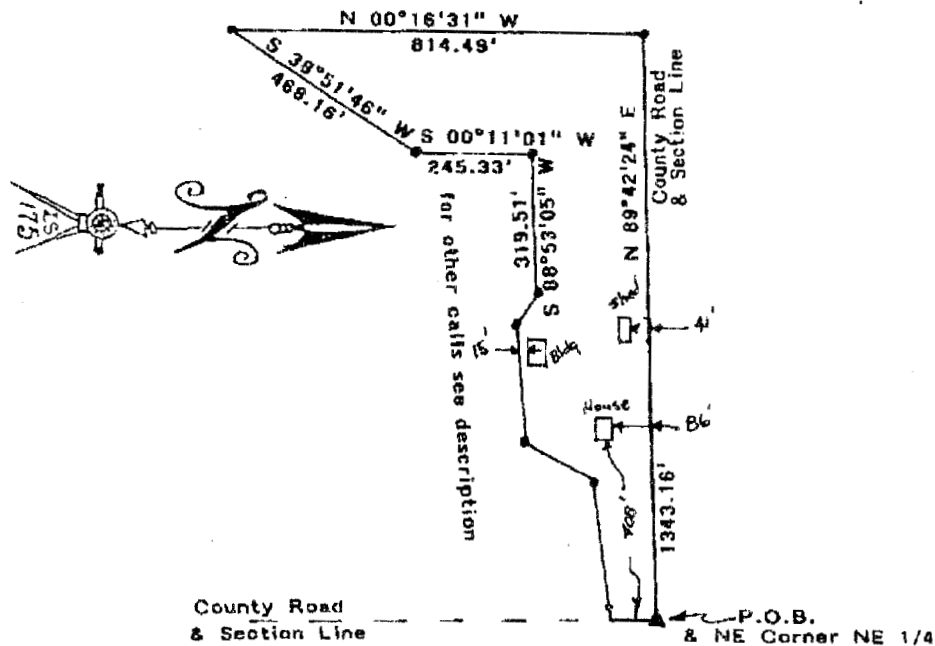


Plat of a Survey

A Tract in the NE 1/4 Sec. 12 T17S R4W



This is a Plat of a Survey conducted by me to locate and describe a Tract of Land located in the Northeast Quarter of Section Twelve, Township Seventeen South, Range Four West, (NE 1/4 T17S R4W) of the Sixth Principal Meridian, all in McPherson County, Kansas. More particularly described as follows :

Beginning at the Northeast Corner of said Northeast Quarter, Thence S 00°00'00\" W along the East Line of said Northeast Quarter, a distance of 98.00 Feet to a point ; Thence N 87°55'17\" W a distance of 26.64 Feet to a 1/2\" Rebar & Cap Thence S 84°58'17\" W a distance of 278.46 Feet to a 1/2\" Rebar & Cap ; Thence S 33°41'50\" W a distance of 158.86 Feet to a 1/2\" Rebar & Cap ; Thence S 88°12'01\" W a distance of 263.65 Feet to a 1/2\" Rebar & Cap ; Thence N 50°52'07\" W a distance of 89.70 Feet to a 1/2\" Rebar & Cap ; Thence S 88°53'05\" W a distance of 319.51 Feet to a 1/2\" Rebar & Cap Thence S 00°11'01\" W a distance of 245.33 Feet to a 1/2\" Rebar & Cap ; Thence S 38°51'46\" W a distance of 468.16 Feet to a Point ; Thence N 00°16'31\" W a distance of 814.49 Feet to a Point on the North Line of said Northeast Quarter ; Thence N 89°42'24\" E along the North Line of said Northeast Quarter, a distance of 1343.16 Feet to the Point of Beginning So described Tract contains 8.842 Acres, More or Less. May 9th 1997

This Survey was completed by me and conforms to all existing rules and regulations as prescribed by the Kansas State Board of Technical Professions for services of this nature in the State of Kansas.

LEGEND

Scale 1\" = 300'

• = 1/2\" Rebar 20 Corners
No vertical scale

Benchmark Professional Surveyors
PO Box 149, Russell Kansas 67665
(913) 483-6404 Fax (913) 483-6447
Page 1 of 1
Scale : 1\" = 300'

Proj.# 975-3A

Date MAY 9th 1997

