



Garber Surveying Service, P.A.

2908 North Plum St.
Hutchinson, Kansas 67502
Phone 620 665-7032 • FAX 620 663-7401

511 North Poplar St.
Newton, Kansas 67114
Phone 316 283-5053 • FAX 316 283-5073

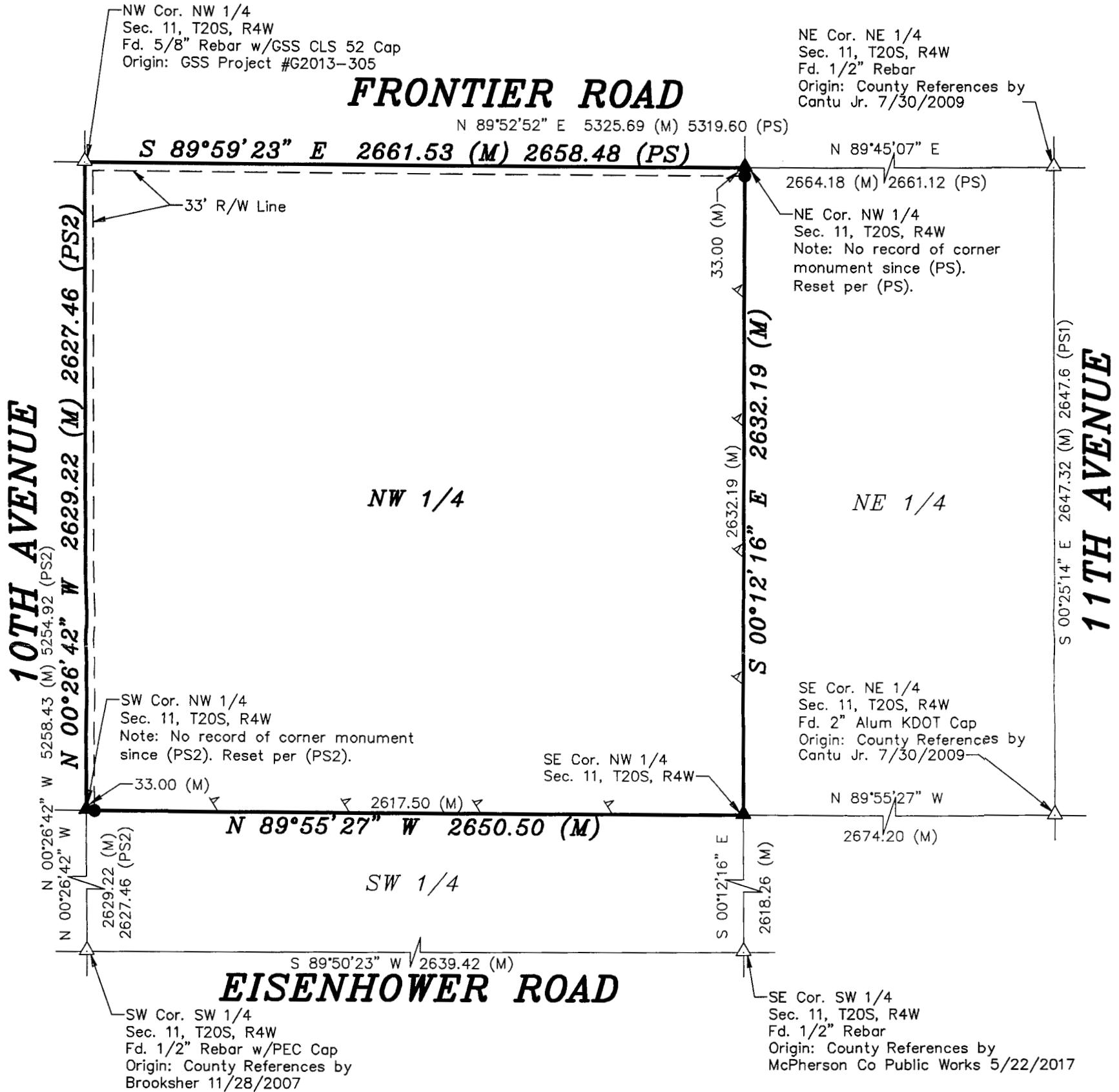
115 East Marlin
McPherson, Kansas 67460
Phone 620 241-4441 • FAX 620 241-4458

SURVEY FOR: FARMERS NATIONAL

Project No. G2019-818

DESCRIPTION:

The Northwest Quarter of Section 11, Township 20 South, Range 4 West of the 6th Principal Meridian, McPherson County, Kansas.



LEGEND

- △ - Sectional Monument Found
- ▲ - Section Monument Set (5/8" x 24" Iron Rebar w/GSS CLS 52 Cap)
- - 5/8" x 24" Iron Rebar Set w/GSS CLS 52 Cap
- ▽ - Lath Set on Line
- (M) - Measured
- (PS) - Previous Survey by A. Bass 4/8/1884
- (PS1) - Previous Survey by Rankin 3/4/1966
- (PS2) - Previous Survey by Joshua Leonard 4/14/1879

DATE OF FIELD WORK: November 14, 2019

SURVEYOR'S CERTIFICATE:

I hereby certify this plat to be a true, correct and complete representation of the property described above as surveyed under my supervision.
Dated: November 20, 2019



Scale: 1" = 500'
BASIS OF BEARING
= NAD 83 KANSAS
SOUTH ZONE

Nicholas D. Schmidt, PS #1492

