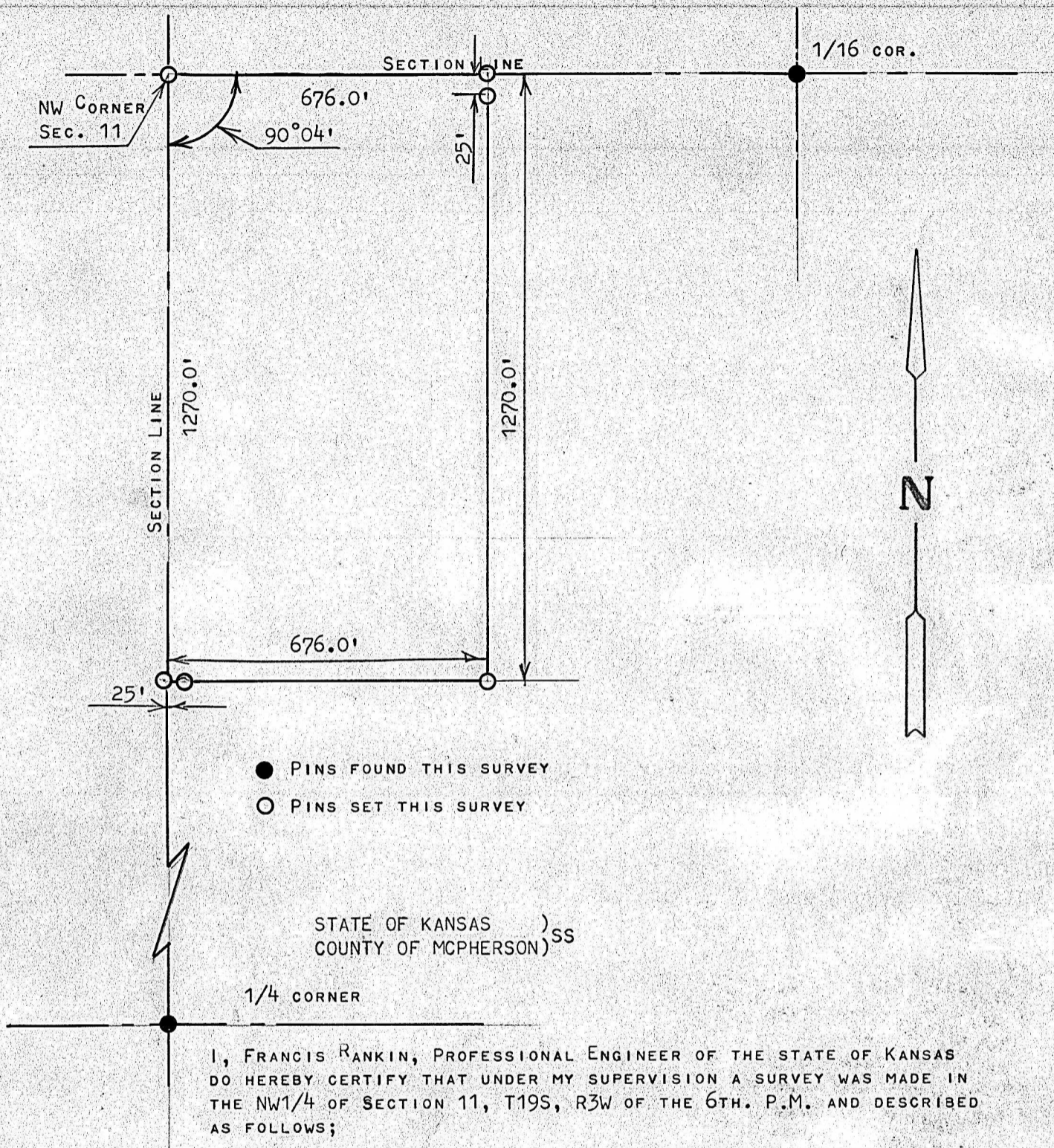


A SURVEY OF A TRACT OF LAND IN
THE NW1/4, SECTION 11, T19S R3W
MCPHERSON, COUNTY



I, FRANCIS RANKIN, PROFESSIONAL ENGINEER OF THE STATE OF KANSAS
DO HEREBY CERTIFY THAT UNDER MY SUPERVISION A SURVEY WAS MADE IN
THE NW1/4 OF SECTION 11, T19S, R3W OF THE 6TH. P.M. AND DESCRIBED
AS FOLLOWS;

BEGINNING AT THE NW CORNER OF SAID NW1/4, SECTION 11, T19S, R3W; THENCE
SOUTH ON SECTION LINE 1270.0 FEET; THENCE EAST PARALLEL WITH SECTION
LINE 676.0 FEET; THENCE NORTH PARALLEL WITH SECTION LINE AND TO
SECTION LINE, 1270.0 FEET; THENCE WEST ON SECTION LINE 676.0 FEET
TO PLACE OF BEGINNING, SAID TRACT OF LAND CONTAINS 19.71 ACRES MORE
OR LESS, AND THAT THE ABOVE PLAT IS A TRUE EXHIBIT OF SAID SURVEY
AS FAR AS IT IS KNOWN TO ME.

SURVEY CALLED FOR BY JOE BURK

SIGNED THIS 9 DAY OF JULY, 1968

Francis Rankin
FRANCIS RANKIN
PROFESSIONAL ENGINEER
MCPHERSON, KANSAS

