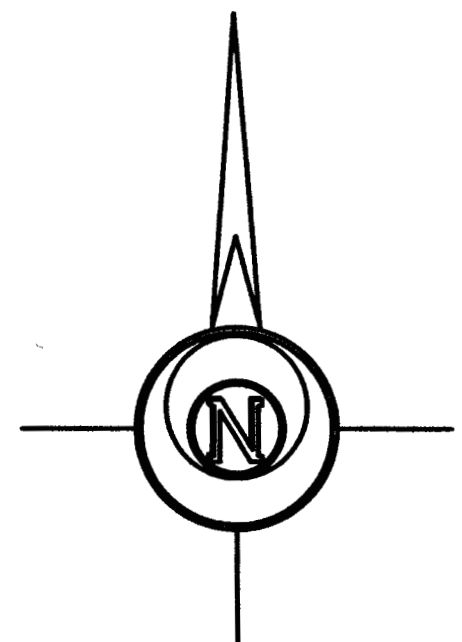


LEGEND

- △ - Sectional Monument Found
- - Survey Monument Found
- - 5/8" x 24" Iron Rebar Set w/G.S.S. Cap
- (C) - Calculated
- (M) - Measured
- (PS) - Previous Survey by Galen Forgy 10/9/1978
- (R) - Record measurement



BASIS OF BEARING = NAD 83 KANSAS SOUTH ZONE

DESCRIPTION OF RECORD (Bk. 667, Pg. 72490):

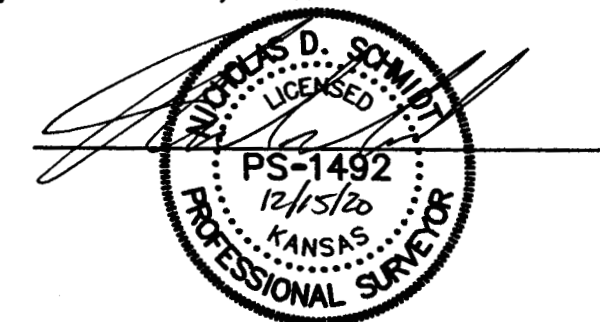
Southeast Quarter of Section 11, Township 18 South, Range 3 West of the 6th P.M., LESS a tract described as follows:


Beginning at a point on the South line of said Southeast Quarter, Section 11, said point being South 89 degrees 56 minutes 13 seconds East a distance of 700 feet from the Southwest corner of said Southeast Quarter; thence South 89 degrees 56 minutes 13 seconds East along the South line of said Southeast Quarter a distance of 607.05 feet; thence North 0 degrees 03 minutes 47 seconds East a distance of 700 feet; thence North 89 degrees 56 minutes 13 seconds West a distance of 922.67 feet to a point on the East right-of-way line of I-135 Highway; thence South 0 degrees 04 minutes East along said right-of-way a distance of 101.13 feet; thence continuing along said right-of-way on a curve to the left having a radius of 7514.44 feet, a distance of 530.01 feet, said curve having a long chord of 529.90 feet and a bearing of South 2 degrees 05 minutes East; thence continuing along said right-of-way South 87 degrees 01 minutes East a distance of 195.60 feet; thence continuing along said right-of-way South 70 degrees 54 minutes East a distance of 106.00 feet; thence South 0 degrees 03 minutes 47 seconds West a distance of 24.80 feet back to the point of beginning; AND LESS a tract described as follows:

Beginning at the intersection of the apparent North line of the Southeast Quarter of Section 11 and the East right-of-way of I-135 Highway; thence South along said East right-of-way on an assumed bearing of South 3 degrees 59 minutes 54 seconds West a distance of 291.50 feet; thence continuing along said right-of-way on a curve to the left having a radius of 11,334.16 feet, an arc distance of 732.13 feet, said curve having a long chord of 732.00 feet and a bearing of South 1 degree 47 minutes West; thence continuing along said right-of-way South 0 degrees 04 minutes East a distance of 908.87 feet; thence South 89 degrees 56 minutes 13 seconds East a distance of 280.11 feet; thence North 63 degrees 15 minutes 35 seconds East a distance of 76.79 feet; thence South 85 degrees 01 minutes 37 seconds East a distance of 158.01 feet; thence North 61 degrees 23 minutes 24 seconds East a distance of 133.36 feet; thence North 14 degrees 24 minutes 01 seconds East a distance of 179.80 feet; thence North 28 degrees 33 minutes 13 seconds East a distance of 78.49 feet; thence North 68 degrees 17 minutes 17 seconds East a distance of 188.73 feet; thence North 14 degrees 17 minutes 39 seconds West a distance of 129.39 feet; thence North 57 degrees 04 minutes 47 seconds West a distance of 229.74 feet; thence North 0 degrees 28 minutes 45 seconds East a distance of 386.96 feet; thence North 19 degrees 13 minutes 05 seconds East a distance of 61.24 feet; thence North 56 degrees 54 minutes 18 seconds East a distance of 196.13 feet; thence North 22 degrees 11 minutes 14 seconds East a distance of 61.64 feet; thence North 2 degrees 01 minutes 18 seconds West a distance of 502.48 feet; thence North 0 degrees 08 minutes 41 seconds East a distance of 163.05 feet to a point on the apparent North Line of the Southeast Quarter of Section 11; thence North 89 degrees 19 minutes 14 seconds West a distance of 807.62 feet back to the point of beginning, McPherson County, Kansas.

SURVEYOR'S CERTIFICATE:

I hereby certify this plat to be a true, correct and complete representation of the property described hereon, as surveyed under my supervision, this 15th day of December, 2020.



Prepared For:		Description:	
FLOOR PERFECT		A PORTION OF THE SE 1/4 SECTION 11, T18S, R3W McPHERSON COUNTY, KANSAS	
Prepared By:		Garber Surveying Service, P.A.	
		HUTCHINSON 2908 North Plum St. 67502 Ph. 620-665-7032 (Main Office)	
		BRANCH OFFICES: MANHATTAN Ph. 785-320-4810 MCPHERSON Ph. 620-241-4441 SALINA Ph. 785-404-6302 WICHITA Ph. 316-283-5033 WICHITA Ph. 316-260-9933	
Drawn By:	KLL	Scale:	1"=200'
Checked By:	NDS	Date:	12/15/2020
		Date of Field Work:	November 19, 2020
		Sheet	1 of 1 Sheet(s)
		Job No:	G2020-926