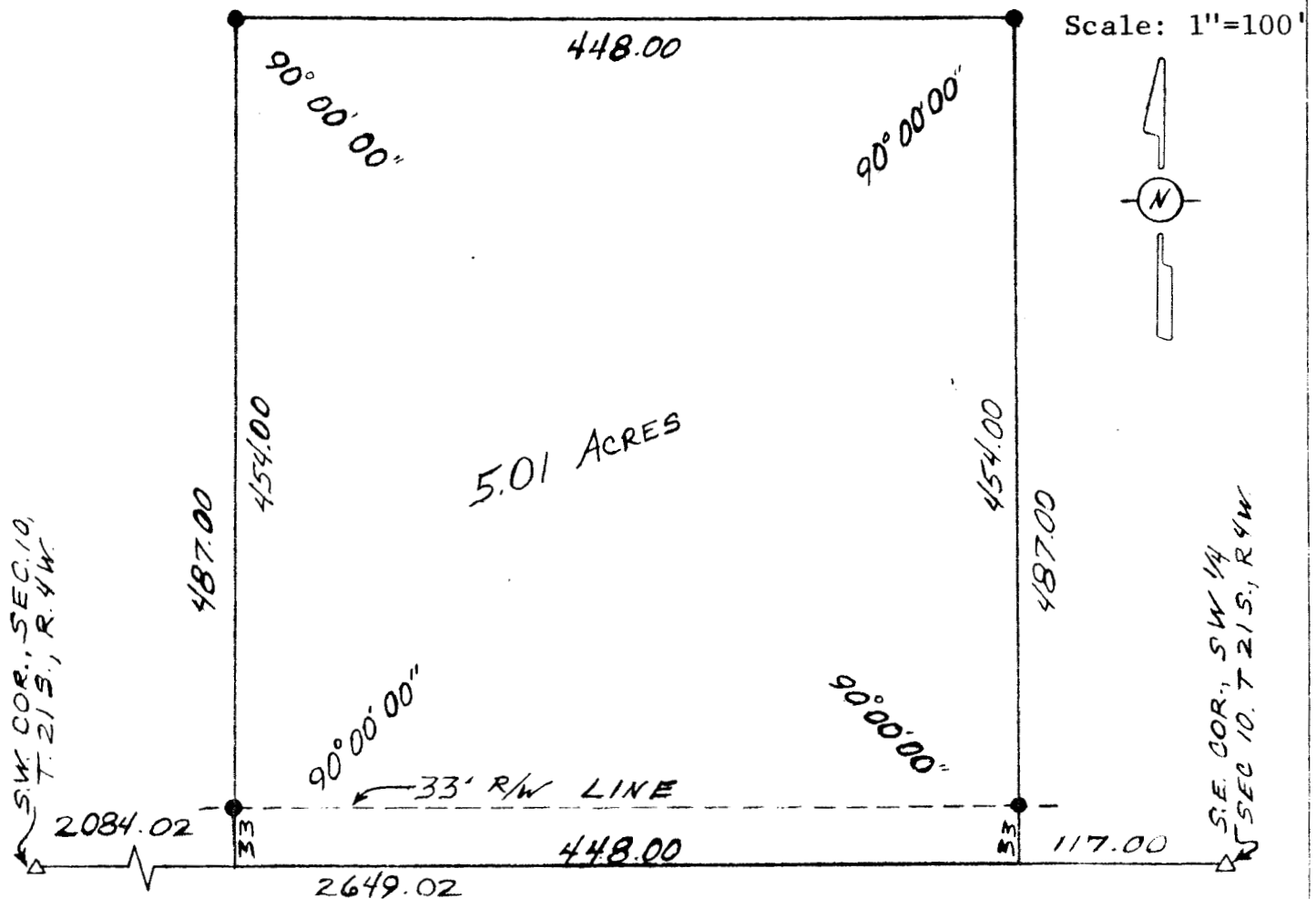


Survey for: Ida Neufeldt Trust
By: Garber Surveying Service, P.A.
217 East First Ave., Suite 9
Hutchinson, Kansas 67501

DESCRIPTION: A tract of land in the S.W. $\frac{1}{4}$, Section 10, T.21 S.,
R.4 W. of the 6th P.M. in McPherson County, Kansas.

- - Iron Pin Set
- △ - Gov't Cor. Found



I hereby certify this plat to be a true, correct
and complete representation of the property described
above and on the attached sheet, as surveyed by me,
this 17th day of January, 1980.

Daniel E. Garber

