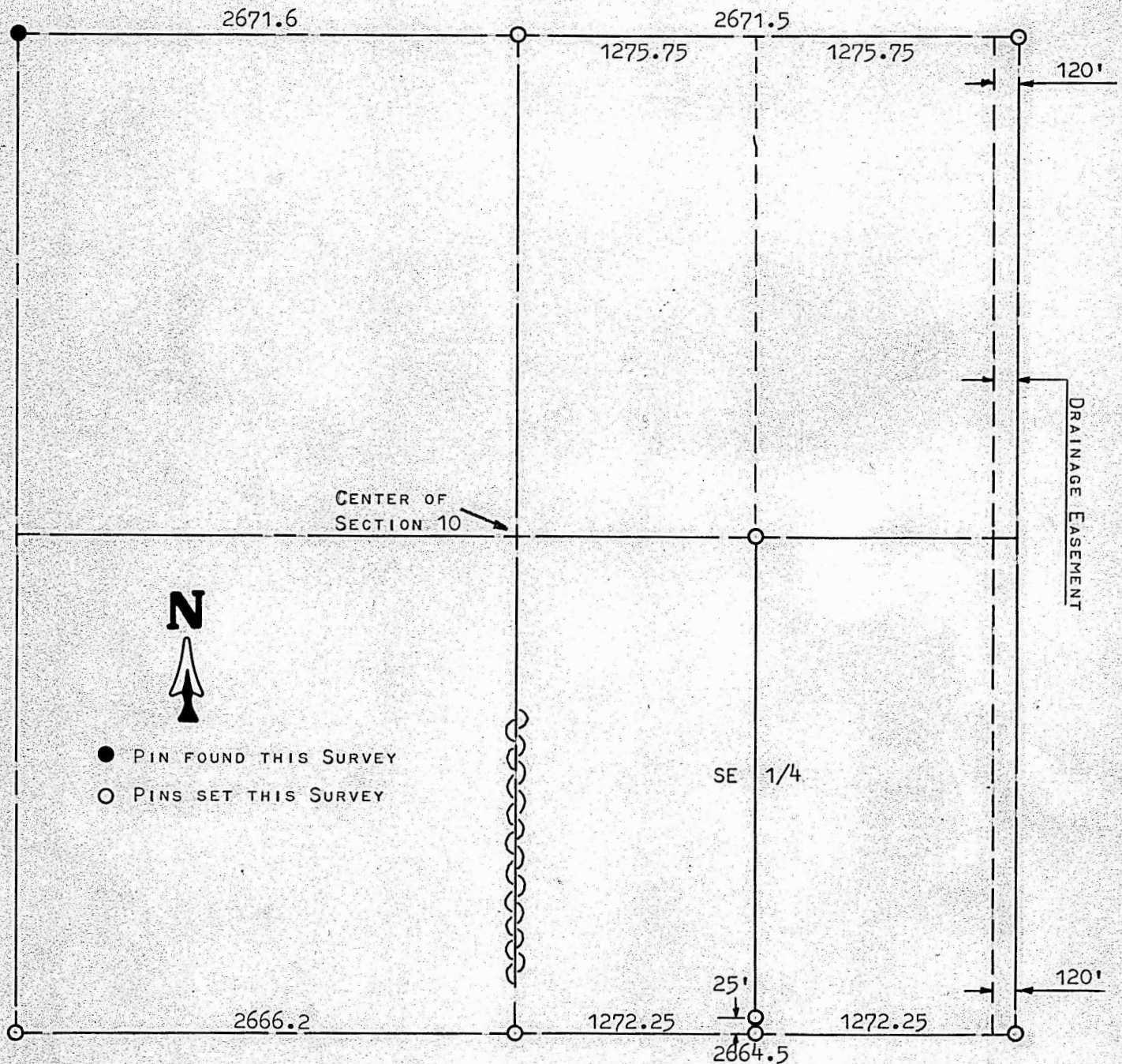


A SURVEY IN THE SE1/4 OF  
SECTION 10, T20S-R4W



STATE OF KANSAS )  
COUNTY OF McPHERSON) SS

I, FRANCIS RANKIN, COUNTY ENGINEER OF McPHERSON COUNTY, KANSAS, DO HEREBY CERTIFY THAT THAT UNDER MY SUPERVISION A SURVEY WAS MADE IN THE SE1/4 OF SECTION 10, T20S-R4W OF THE 6TH P.M., AND THAT THE ABOVE PLAT IS A TRUE EXHIBIT OF SAID SURVEY AS FAR AS IT IS KNOWN TO ME.

SURVEY CALLED FOR BY HOSTETLER REAL ESTATE

SIGNED THIS 18 DAY OF AUGUST, 1967.

*Francis Rankin*  
FRANCIS RANKIN  
COUNTY ENGINEER  
McPHERSON Co., Ks.



MICROFILM