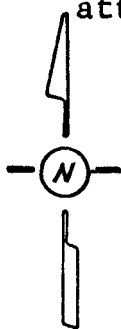


Survey for: Sunflower School  
By: Garber Surveying Service, P.A.  
217 East First Avenue, Suite 9  
Hutchinson, Kansas 67501  
Phone 316-665-7032

DESCRIPTION: A portion of the Southeast quarter of Section 10,  
Township 20 South, Range 2 West of the 6th Principal Meridian in  
McPherson County, Kansas as more particularly described on the  
attached sheet.

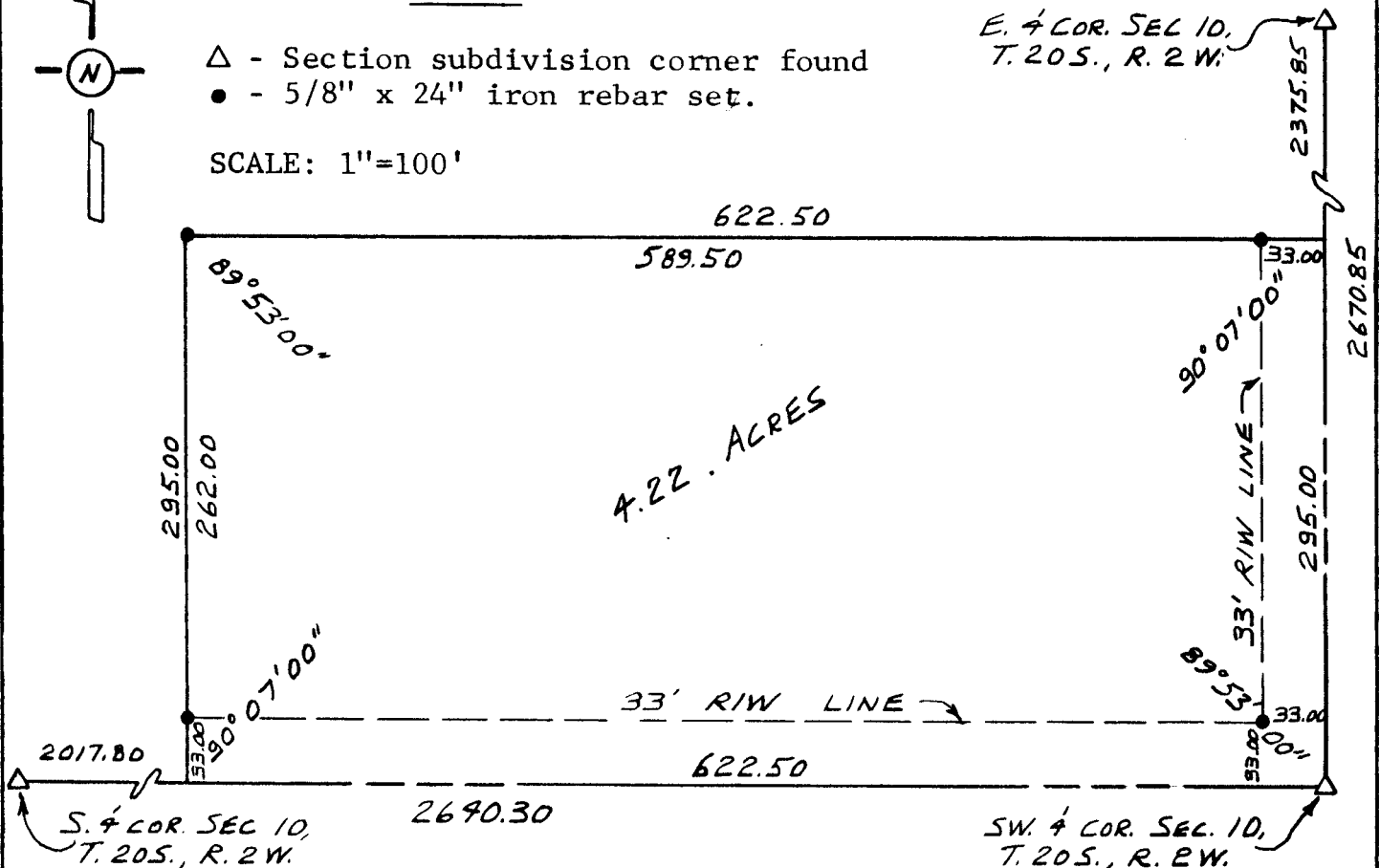
LEGEND



- △ - Section subdivision corner found
- - 5/8" x 24" iron rebar set.

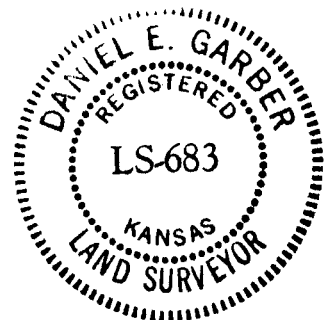
SCALE: 1"=100'

E. 1/4 COR. SEC. 10,  
T. 20 S., R. 2 W.



I hereby certify this plat to be a true, correct  
and complete representation of the property described  
above and on the attached sheet, as surveyed by me,  
this 18th day of November, 1982.

Daniel E. Garber RLS



Proj. G82-148